

SPECIAL: Detection of *Xylella fastidiosa*

In October 2013 the Italian Plant Protection Organisation raised an alert to the EPPO, that the bacteria *Xylella fastidiosa* has been detected for the first time in olive trees in the EPPO region, where the Quick Olive Decline Syndrome has already been causing devastating losses in Olive trees. In the meantime the bacteria has also been found in *Polygala myrtifolia* in France. *Xylella fastidiosa* is listed as quarantine pest in the EU (EPPO A1 list) and recently the EU commission has released emergency measures to control the outbreak of the disease and prevent distribution in other European countries.

Our reagents for the detection of the bacterium have been verified in a ringtest in Italy to reliably identify the isolate now found in olive trees (2). They are now also used by plant protection institutions across Europe to monitor the disease.

The LOEWE IF assay and ELISA tests, as well as PCR reagents detect different strains of *Xylella fastidiosa*, such as *Xylella fastidiosa* spp. multiplex, *Xylella fastidiosa* spp. fastidiosa, *Xylella pauca* spp. Codiro. Please contact us, if you need further information on our different test systems.



(1) www.eppo.int/QUARANTINE/special_topics/Xylella_fastidiosa/Xylella_fastidiosa.htm

(2) G. Loconsole et al., Journal of Plant Pathology (2014), 96 (1), 1-8, DETECTION OF XYLELLA FASTIDIOSA IN OLIVE TREES BY MOLECULAR AND SEROLOGICAL METHODS

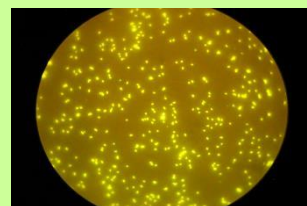
(3) Pictures were taken on the occasion of a visit of the INTERNATIONAL SYMPOSIUM ON THE EUROPEAN OUTBREAK OF XYLELLA FASTIDIOSA IN OLIVE, OCTOBER, 21-24 2014, GALLIPOLI (LECCE)–LOCOROTONDO (BARI), ITALY

Tests available

Immunofluorescence

07319/01 Antiserum *Xylella fastidiosa* for 5000 tests

07319/02 Antiserum *Xylella fastidiosa* for 1000 tests



ELISA Sets and Complete Kits

ELISA Sets contain IgG and conjugate; complete kits contain IgG and conjugate, positive and negative controls, buffers, chemicals and high-binding ELISA plates.

07119S/100 Set 100 tests

07119C/096 Complete Kit 96 tests

07119S/500 Set 500 tests

07119C/480 Complete Kit 480 tests

07119S/1000 Set 1000 tests

07119C/960 Complete Kit 960 tests



PCR Sets and Complete Reaction Kits

PCR sets contain premix, positive and negative controls; PCR complete reaction kits, additionally contain a stable DNA polymerase and reaction buffers.

08119S/100 Set 100 reactions

08119C/100 Kit 100 reactions

