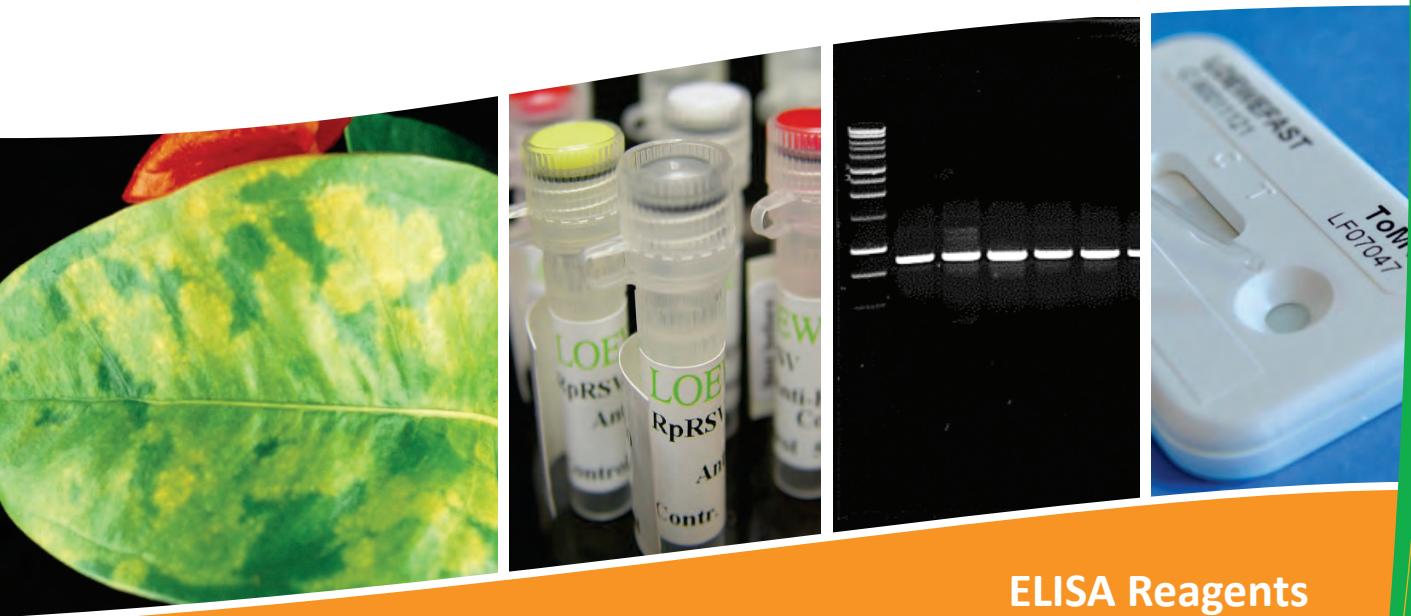


# LOEWE®

## Plant Disease Diagnostics

### Catalog 2014



ELISA Reagents

LOEWE® FAST Lateral Flow Kits

Immuno Fluorescence

Molecular Diagnostics

## ELISA Products

In plant disease diagnostics ELISA (Enzyme-linked Immunosorbent Assay) is the most common test method for the detection of plant pathogens, like viruses and bacteria. LOEWE® offers a range of more than 150 high quality ELISA products for specific and sensitive detection of plant diseases. ELISA reagents can be supplied as ELISA sets or convenient complete kits. All necessary reagents, buffers and plates are also available separately.

### NEW 2014:

For a wide range of ELISA reagents we are now offering sizes of 300, 1000 and 5000 tests!

### ELISA Sets

contain IgG and AP-Conjugate and are supplied as 100, 300, 500, and for many pathogens as 1000 and 5000 test units. Our ELISA sets are optimized for a test volume of 200 µl per well, ensuring highest accuracy, repeatability and sensitivity.

Volumes provided:	100 tests	300 tests	500 tests	1000 tests	5000 tests
	120 µl	3 x 120µl	520 µl	1020 µl	5x1020µl

### ELISA Complete Kits

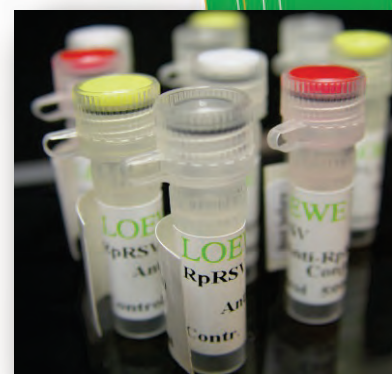
available for 96, 480, and 960 tests. The kits contain all ELISA reagents, controls, buffers and ELISA plates or modules to perform the ELISA assay:

Components	96 test format	480 test format	960 test format
Antibody	0.1 ml	0.5 ml	1.0 ml
Antibody-AP-conjugate	0.1 ml	0.5 ml	1.0 ml
Positive Control	10 tests	10 tests	20 tests
Negative Control	10 tests	10 tests	20 tests
Coating Buffer	1 liter	1 liter	1 liter
Wash Buffer	1 x 5 liter	1 x 5 liter	2 x 5 liter
Conjugate/Sample Buffer	1 x 1 liter	2 x 1 liter	4 x 1 liter
Substrate Buffer (5x)	1 x 25 ml	1 x 25 ml	2 x 25 ml
Tween 20	10 ml	10 ml	10 ml
Substrate Tablets	4 tablets à 5 mg	5 tablets à 20 mg	10 tablets à 20 mg
High-binding ELISA plates	12 Modules à 8 wells	5 plates	10 plates
Sealing Cover	1	5	10

### ELISA Positive and Negative Controls

Negative controls are made from a healthy host plant and are tested for the absence of the respective pathogen. They are lyophilized and sufficient for 10 test wells.

Positive controls are made from infected plant material or bacterial cultures, if not stated otherwise. They are lyophilized and sufficient for 10 test wells. Inactivated positive controls are additionally tested for the absence of infectivity. Unspecific non-pathogenic 'method' controls are sold for some quarantine pathogens (catalog nos. 07210PC or 07208PC).

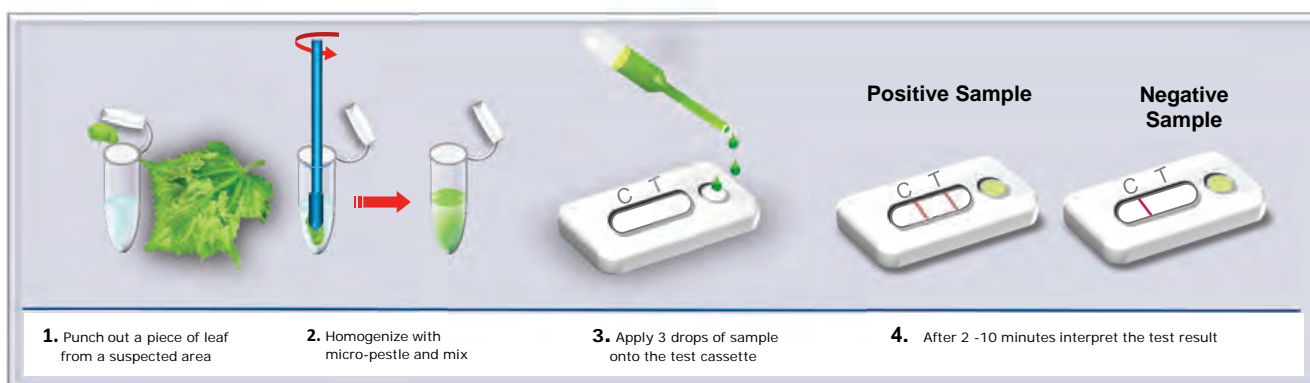


## LOEWE®FAST Rapid Test Series

The **LOEWE®FAST** rapid test series allows reliable and specific detection of plant pathogens within minutes. As stand-alone diagnostic tool these tests provide quick and easy assessment of suspicious plant material in the field or greenhouse without the need of a laboratory or.

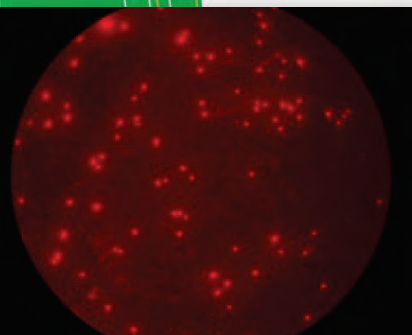


- ✓ Fast - easy - on the spot
- ✓ Specific detection of plant pathogens within minutes
- ✓ Testing in the field or greenhouse without the need of a laboratory
- ✓ LOEWE®FAST basic kits include:
  - 5 single-use test cassettes
  - 5 pre-filled tubes with sample buffer
  - 5 single-use pipettes for sample application
- ✓ Other package sizes are also available.
- ✓ Available for an increasing number of pathogens



## Antisera for Immuno Fluorescence

We are offering a wide range of polyclonal antisera from goat and rabbit, secondary fluorescence labelled antibodies, as well as multiwell slides and cover slides for immuno fluorescence studies:



- ✓ Antisera and Controls
- ✓ Fluorescence labelled Secondary Antibodies (FITC or Cy3™)
- ✓ Multiwell Slides
- ✓ Cover Slides

## Molecular Diagnostics

The PCR technique allows specific and sensitive detection of plant pathogens, when other test methods are not available or a second method is needed. In addition to our PCR sets for the detection of plant bacteria, phytoplasma and fungi, we are now offering convenient PCR Complete Reaction Kits.

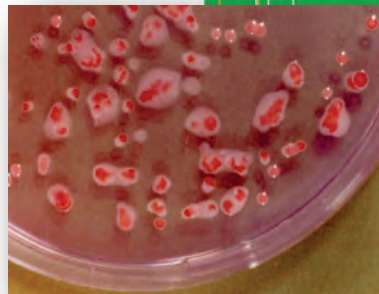
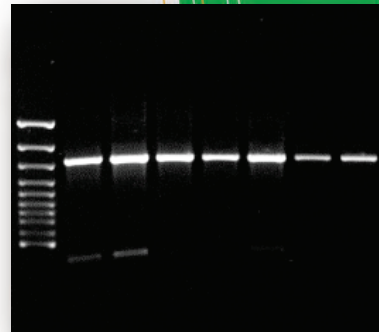
- ✓ Sensitive diagnostic method
- ✓ Testing of DNA isolated from colonies or infected plants
- ✓ Highly specific and sensitive
- ✓ Ready-to-use
- ✓ Fast and cost effective

### PCR Sets

The PCR sets contain a premix, including the pathogen specific primers and dNTPs for 100 PCR reactions and positive and negative controls for 10 reactions. All components are pre-tested and each product is accompanied by a lot-specific certificate and a working protocol.

### PCR Complete Reaction Kits

Explore this fast and cost effective way to establish PCR analysis in your lab! Your sample DNA\* is subjected to a pre-tested and evaluated PCR system, without the hassle of optimizing reaction- and cycle conditions. Included are PCR reagents, premix, positive and negative controls, DNA-Polymerase and a detailed protocol, thus providing the perfect tool for a successful PCR analysis!



#### Content of the Kit for 100 PCR reactions

(\* Reagents for sample preparation are not included in the kit)

Premix (primers/dNTPs)

Positive Control (10 reactions)

Negative Control (10 reactions)

DNA-Polymerase

PCR Reaction Buffer

PCR grade water

## Contact and Order Information

Orders can be placed via e-mail, phone, fax, or in written form to:

LOEWE® Biochemica GmbH  
Mühlweg 2a, 82054 Sauerlach, Germany  
Phone: +49 (0) 810461620  
Fax: +49 (0) 8104 61648  
E-mail: [sales@loewe-info.com](mailto:sales@loewe-info.com)

Or online at [www.loewe-info.com](http://www.loewe-info.com)

## CONTENTS

<b>Lateral Flow Kits LOEWE®FAST</b>	<b>Page 5 - 8</b>
<b>ELISA Products</b>	<b>Page 9 - 56</b>
ELISA Products - Viruses	Page 9 - 47
ELISA Products - Bacteria	Page 47 - 54
ELISA Products - Fungi	Page 55 - 56
ELISA Products - Nematodes	Page 56
<b>Immuno Fluorescence Products</b>	<b>Page 56 - 59</b>
Immunofluorescence - Antisera	Page 56 - 58
Immunofluorescence - Secondary Antibodies	Page 58
Immunofluorescence - Disposables	Page 59
<b>PCR Products</b>	<b>Page 59 - 61</b>
PCR Products - Phytoplasma	Page 59
PCR Products - Bacteria	Page 60
PCR Products - Fungi	Page 60 - 61
<b>ELISA Chemicals</b>	<b>Page 61</b>
<b>ELISA Disposables</b>	<b>Page 62</b>
<b>AGB - General Terms for Sales and Delivery</b>	<b>Appendix</b>



<b>Lateral Flow Tests LOEWE®FAST</b>			
<b>For rapid diagnosis of plant pathogens in the field</b>			
	<b>One kit contains 5 cassettes, 5 single-use pipettes and 5 ready-to-use buffers.</b>		
	<b>For Positive Controls see ELISA section</b>		
<b>LF07054</b>	<b>LOEWE®FAST Kit Apple Mosaic Virus hop isolate</b>	<b>Size</b>	
	<b>For rapid detection of ApMV in suspected plant material</b>		
LF07054/05	LOEWE®FAST Kit Apple Mosaic Virus hop isolate	5 tests	
LF07054/20	LOEWE®FAST Kit Apple Mosaic Virus hop isolate	20 tests	
LF07054/50	LOEWE®FAST Kit Apple Mosaic Virus hop isolate	50 tests	
<b>LF07158</b>	<b>LOEWE®FAST Kit Botrytis cinerea grapevine isolate</b>	<b>Size</b>	
	<b>For rapid detection of. B. cinerea</b>		
LF07158/05	LOEWE®FAST Kit Botrytis cinerea grapevine isolate	5 tests	
LF07158/20	LOEWE®FAST Kit Botrytis cinerea grapevine isolate	20 tests	
LF07158/50	LOEWE®FAST Kit Botrytis cinerea grapevine isolate	50 tests	
<b>LF07063</b>	<b>LOEWE®FAST Kit Clavibacter m. ssp. michiganensis</b>	<b>Size</b>	
	<b>For rapid detection of C.m. ssp. michiganensis in suspected cultures</b>		
LF07063/05	LOEWE®FAST Kit Clavibacter m. ssp. michiganensis	5 tests	
LF07063/20	LOEWE®FAST Kit Clavibacter m. ssp. michiganensis	20 tests	
LF07063/50	LOEWE®FAST Kit Clavibacter m. ssp. michiganensis	50 tests	
<b>LF07064</b>	<b>LOEWE®FAST Kit Clavibacter m. ssp. sepedonicus</b>	<b>Size</b>	
	<b>For rapid detection of C.m. ssp. sepedonicus in suspected cultures</b>		
LF07064/05	LOEWE®FAST Kit Clavibacter m. ssp. sepedonicus	5 tests	
LF07064/20	LOEWE®FAST Kit Clavibacter m. ssp. sepedonicus	20 tests	
LF07064/50	LOEWE®FAST Kit Clavibacter m. ssp. sepedonicus	50 tests	
<b>LF07022</b>	<b>LOEWE®FAST Kit Cucumber Green Mottle Mosaic Virus</b>	<b>Size</b>	
	<b>For rapid detection of CGMMV in suspected leaves</b>		
LF07022 /05	LOEWE®FAST Kit Cucumber Green Mottle Mosaic Virus	5 tests	
LF07022/20	LOEWE®FAST Kit Cucumber Green Mottle Mosaic Virus	20 tests	
LF07022/50	LOEWE®FAST Kit Cucumber Green Mottle Mosaic Virus	50 tests	
<b>LF07186</b>	<b>LOEWE®FAST Kit Cucumber Mosaic Virus</b>	<b>Size</b>	
	<b>For rapid detection of CMV in suspected leaves</b>		
LF07186/05	LOEWE®FAST Kit Cucumber Mosaic Virus	5 tests	
LF07186/20	LOEWE®FAST Kit Cucumber Mosaic Virus	20 tests	
LF07186/50	LOEWE®FAST Kit Cucumber Mosaic Virus	50 tests	
<b>LF07105</b>	<b>LOEWE®FAST Kit Hop Mosaic Virus</b>	<b>Size</b>	
	<b>For rapid detection of HpMV in suspected leaves</b>		
LF07105/05	LOEWE®FAST Kit Hop Mosaic Virus	5 tests	
LF07105/20	LOEWE®FAST Kit Hop Mosaic Virus	20 tests	
LF07105/50	LOEWE®FAST Kit Hop Mosaic Virus	50 tests	



<b>LF07505</b>	<b>LOEWE@FAST Kit Impatiens Necrotic Spot Virus</b>	<b>Size</b>	
	<b>For rapid detection of INSV in suspected leaves</b>		
LF07505/05	LOEWE@FAST Kit Impatiens Necrotic Spot Virus	5 tests	
LF07505/20	LOEWE@FAST Kit Impatiens Necrotic Spot Virus	20 tests	
LF07505/50	LOEWE@FAST Kit Impatiens Necrotic Spot Virus	50 tests	
<b>LF07097</b>	<b>LOEWE@FAST Kit Melon Necrotic Spot Virus</b>	<b>Size</b>	
	<b>For rapid detection of MNSV in suspected leaves</b>		
LF07097/05	LOEWE@FAST Kit Melon Necrotic Spot Virus	5 tests	
LF07097/20	LOEWE@FAST Kit Melon Necrotic Spot Virus	20 tests	
LF07097/50	LOEWE@FAST Kit Melon Necrotic Spot Virus	50 tests	
<b>LF07060</b>	<b>LOEWE@FAST Kit Papaya Ringspot Virus</b>	<b>Size</b>	
	<b>For rapid identification of PRSV in symptom bearing leaves</b>		
LF07060/05	LOEWE@FAST Kit Papaya Ringspot Virus	5 tests	
LF07060/20	LOEWE@FAST Kit Papaya Ringspot Virus	20 tests	
LF07060/50	LOEWE@FAST Kit Papaya Ringspot Virus	50 tests	
<b>LF07128</b>	<b>LOEWE@FAST Kit Pepino Mosaic Virus</b>	<b>Size</b>	
	<b>For rapid detection of PepMV in suspected leaves</b>		
LF07128/05	LOEWE@FAST Kit Pepino Mosaic Virus	5 tests	
LF07128/20	LOEWE@FAST Kit Pepino Mosaic Virus	20 tests	
LF07128/50	LOEWE@FAST Kit Pepino Mosaic Virus	50 tests	
<b>LF07159</b>	<b>LOEWE@FAST Kit Pepper Veinal Mottle Virus</b>	<b>Size</b>	
	<b>For rapid detection of PVMV in suspected leaves</b>		
LF07159/05	LOEWE@FAST Kit Pepper Veinal Mottle Virus	5 tests	
LF07159/20	LOEWE@FAST Kit Pepper Veinal Mottle Virus	20 tests	
LF07159/50	LOEWE@FAST Kit Pepper Veinal Mottle Virus	50 tests	
<b>LF07037</b>	<b>LOEWE@FAST Kit Potato Virus X</b>	<b>Size</b>	
	<b>For rapid detection of PVX in suspected leaves</b>		
LF07037/05	LOEWE@FAST Kit Potato Virus X	5 tests	
LF07037/20	LOEWE@FAST Kit Potato Virus X	20 tests	
LF07037/50	LOEWE@FAST Kit Potato Virus X	50 tests	
<b>LF07038</b>	<b>LOEWE@FAST Kit Potato Virus Y</b>	<b>Size</b>	
	<b>For rapid detection of PVY in suspected leaves</b>		
LF07038/05	LOEWE@FAST Kit Potato Virus Y	5 tests	
LF07038/20	LOEWE@FAST Kit Potato Virus Y	20 tests	
LF07038/50	LOEWE@FAST Kit Potato Virus Y	50 tests	
<b>LF07051</b>	<b>LOEWE@FAST Kit Prune Dwarf Virus</b>	<b>Size</b>	
	<b>For rapid detection of PDV in suspected plant material</b>		
LF07051/05	LOEWE@FAST Kit Prune Dwarf Virus	5 tests	
LF07051/20	LOEWE@FAST Kit Prune Dwarf Virus	20 tests	
LF07051/50	LOEWE@FAST Kit Prune Dwarf Virus	50 tests	

<b>LF07052</b>	<b>LOEWE@FAST Kit Prunus Necrotic Ringspot Virus</b>	<b>Size</b>	
	<b>For rapid detection of PNRV in suspected plant material</b>		
LF07052/05	LOEWE@FAST Kit Prunus Necrotic Ringspot Virus	5 tests	
LF07052/20	LOEWE@FAST Kit Prunus Necrotic Ringspot Virus	20 tests	
LF07052/50	LOEWE@FAST Kit Prunus Necrotic Ringspot Virus	50 tests	
<b>LF07056</b>	<b>LOEWE@FAST Kit Ralstonia solanacearum</b>	<b>Size</b>	
	<b>For rapid detection of R. solanacearum in suspected cultures</b>		
LF07056/05	LOEWE@FAST Kit Ralstonia solanacearum	5 tests	
LF07056/20	LOEWE@FAST Kit Ralstonia solanacearum	20 tests	
LF07056/50	LOEWE@FAST Kit Ralstonia solanacearum	50 tests	
<b>LF07042</b>	<b>LOEWE@FAST Kit Tobacco Mosaic Virus</b>	<b>Size</b>	
	<b>For rapid detection of TMV in symptom bearing leaves</b>		
LF07042 /05	LOEWE@FAST Kit Tobacco Mosaic Virus	5 tests	
LF07042/20	LOEWE@FAST Kit Tobacco Mosaic Virus	20 tests	
LF07042/50	LOEWE@FAST Kit Tobacco Mosaic Virus	50 tests	
<b>LF07047</b>	<b>LOEWE@FAST Kit Tomato Mosaic Virus</b>	<b>Size</b>	
	<b>For rapid detection of ToMV in symptom bearing leaves</b>		
LF07047/05	LOEWE@FAST Kit Tomato Mosaic Virus	5 tests	
LF07047/20	LOEWE@FAST Kit Tomato Mosaic Virus	20 tests	
LF07047/50	LOEWE@FAST Kit Tomato Mosaic Virus	50 tests	
<b>LF07501</b>	<b>LOEWE@FAST Kit Tomato Spotted Wilt Virus</b>	<b>Size</b>	
	<b>For rapid detection of TSWV in symptom bearing leaves</b>		
LF07501/05	LOEWE@FAST Kit Tomato Spotted Wilt Virus	5 tests	
LF07501/20	LOEWE@FAST Kit Tomato Spotted Wilt Virus	20 tests	
LF07501/50	LOEWE@FAST Kit Tomato Spotted Wilt Virus	50 tests	
<b>LF07509</b>	<b>LOEWE@FAST Kit TSWV, TCSV, GRSV</b>	<b>Size</b>	
	<b>For rapid detection of TSWV, TCSV and GRSV</b>		
	<b>in symptom bearing plant material</b>		
LF07509 /05	LOEWE@FAST Kit TSWV, TCSV, GRSV	5 tests	
LF07509/20	LOEWE@FAST Kit TSWV, TCSV, GRSV	20 tests	
LF07509/50	LOEWE@FAST Kit TSWV, TCSV, GRSV	50 tests	
<b>LF07077</b>	<b>LOEWE@FAST Kit Xanthomonas hortorum pv. pelargonii</b>	<b>Size</b>	
	<b>For rapid detection of X. h. pv. pelargonii in suspected cultures</b>		
LF07077/05	LOEWE@FAST Kit X. hortorum pv. pelargonii	5 tests	
LF07077/20	LOEWE@FAST Kit X. hortorum pv. pelargonii	20 tests	
LF07077/50	LOEWE@FAST Kit X. hortorum pv. pelargonii	50 tests	
<b>LF07119</b>	<b>LOEWE@FAST Kit Xylella fastidiosa</b>	<b>Size</b>	
	<b>For rapid detection of Xylella fastidiosa in suspected cultures</b>		
LF07119/05	LOEWE@FAST Kit Xylella fastidiosa	5 tests	
LF07119/20	LOEWE@FAST Kit Xylella fastidiosa	20 tests	
LF07119/50	LOEWE@FAST Kit Xylella fastidiosa	50 tests	







<b>ELISA Products - Viruses</b>			
	see page 1 for composition of sets and complete kits		
<b>07001</b>	<b>Alfalfa Mosaic Alfamovirus. AMV</b>	<b>Size</b>	
	(Lucerne Mosaic Virus, Potato Calico Virus) Host range: many species	DAS ELISA	
	Transmission by aphids, grafting, mechanical inoculation, seeds		
07001S/100	Alfalfa Mosaic Virus set / 100	100 tests	
07001S/300	Alfalfa Mosaic Virus set / 300	300 tests	
07001S/500	Alfalfa Mosaic Virus set / 500	500 tests	
07001S/1000	Alfalfa Mosaic Virus set / 1000	1000 tests	
07001S/5000	Alfalfa Mosaic Virus set / 5000	5000 tests	
07001C/096	Alfalfa Mosaic Virus complete kit / 96	96 tests	
07001C/480	Alfalfa Mosaic Virus complete kit / 480	480 tests	
07001C/960	Alfalfa Mosaic Virus complete kit / 960	960 tests	
07001PC	Positive Control Alfalfa Mosaic Virus	1 vial (10 tests)	
07001NC	Negative Control Alfalfa Mosaic Virus	1 vial (10 tests)	
<b>07164</b>	<b>Andean Potato Latent Tymovirus. APLV</b>	<b>Size</b>	
	(Potato Andean Latent Virus). Host range: potato	DAS ELISA	
	Transmitted by contact, grafting, mechanical inoculation, seed, vector		
07164S/100	Andean Potato Latent Virus set / 100	100 tests	
07164S/300	Andean Potato Latent Virus set / 300	300 tests	
07164S/500	Andean Potato Latent Virus set / 500	500 tests	
07164S/1000	Andean Potato Latent Virus set / 1000	1000 tests	
07164C/096	Andean Potato Latent Virus complete kit / 96	96 tests	
07164C/480	Andean Potato Latent Virus complete kit / 480	480 tests	
07164C/960	Andean Potato Latent Virus complete kit / 960	960 tests	
07210PC	Positive Control Quarantine GAR unspecific	1 vial (10 tests)	
07164NC	Negative Control Andean Potato Latent Virus	1 vial (10 tests)	
<b>07160</b>	<b>Andean Potato Mottle Comovirus. APMoV</b>	<b>Size</b>	
	(Potato Andean Mottle Virus) Host range: potato	DAS ELISA	
	Transmission by contact between plants, grafting		
07160S/100	Andean Potato Mottle Virus set / 100	100 tests	
07160S/300	Andean Potato Mottle Virus set / 300	300 tests	
07160S/500	Andean Potato Mottle Virus set / 500	500 tests	
07160S/1000	Andean Potato Mottle Virus set / 1000	1000 tests	
07160C/096	Andean Potato Mottle Virus complete kit / 96	96 tests	
07160C/480	Andean Potato Mottle Virus complete kit / 480	480 tests	
07160C/960	Andean Potato Mottle Virus complete kit / 960	960 tests	
07210PC	Positive Control Quarantine GAR unspecific	1 vial (10 tests)	
07160NC	Negative Control Andean Potato Mottle Virus	1 vial (10 tests)	





<b>07005</b>	<b>Barley Yellow Dwarf Luteovirus (PAV, MAV). BaYDV</b>	<b>Size</b>	
	(Cereal Yellow Dwarf Virus, Oat Red Leaf Virus, Rice Giallume Virus, Ryegrass Chlorotic Streak Virus). Host range: barley, rice, rye	DAS ELISA	
	Transmitted by aphids		
07005S/100	Barley Yellow Dwarf Virus set / 100	100 tests	
07005S/300	Barley Yellow Dwarf Virus set / 300	300 tests	
07005S/500	Barley Yellow Dwarf Virus set / 500	500 tests	
07005C/096	Barley Yellow Dwarf Virus complete kit / 96	96 tests	
07005C/480	Barley Yellow Dwarf Virus complete kit / 480	480 tests	
07005PC	Positive Control Barley Yellow Dwarf Virus	1 vial (10 tests)	
07005NC	Negative Control Barley Yellow Dwarf Virus	1 vial (10 tests)	
<b>07076</b>	<b>Barley Yellow Mosaic Bymovirus BaYMV</b>	<b>Size</b>	
	Host range: barley.	DAS ELISA	
	Transmission: mechanical inoculation, Polymyxa graminis		
07076S/100	Barley Yellow Mosaic Virus set / 100	100 tests	
07076S/300	Barley Yellow Mosaic Virus set / 300	300 tests	
07076S/500	Barley Yellow Mosaic Virus set / 500	500 tests	
07076C/096	Barley Yellow Mosaic Virus complete kit / 96	96 tests	
07076C/480	Barley Yellow Mosaic Virus complete kit / 480	480 tests	
07076PC	Positive Control Barley Yellow Mosaic Virus	1 vial (10 tests)	
07076NC	Negative Control Barley Yellow Mosaic Virus	1 vial (10 tests)	
<b>07172</b>	<b>Bean Common Mosaic Potyvirus. Serotype B. BCMV</b>	<b>Size</b>	
	(Bean Common Mosaic Virus Serotype B, Bean Mosaic Virus, Bean Western Mosaic Virus, Mungbean Mosaic Virus) Host range: bean species.	DAS ELISA	
	Transmission by aphids, mechanical inoculation, seed		
07172S/100	Bean Common Mosaic Virus set / 100	100 tests	
07172S/300	Bean Common Mosaic Virus set / 300	300 tests	
07172S/500	Bean Common Mosaic Virus set / 500	500 tests	
07172C/096	Bean Common Mosaic Virus complete kit / 96	96 tests	
07172C/480	Bean Common Mosaic Virus complete kit / 480	480 tests	
07172PC	Positive Control Bean Common Mosaic Virus	1 vial (10 tests)	
07172NC	Negative Control Bean Common Mosaic Virus	1 vial (10 tests)	
<b>07114</b>	<b>Bean Common Mosaic Necrosis Potyvirus Serotype A. BCMNV</b>	<b>Size</b>	
	Host range: bean species.	DAS ELISA	
	Transmission by aphids, mechanical inoculation, seed		
07114S/100	Bean Common Mosaic Necrosis Virus set / 100	100 tests	
07114S/300	Bean Common Mosaic Necrosis Virus set / 300	300 tests	
07114S/500	Bean Common Mosaic Necrosis Virus set / 500	500 tests	
07114C/096	Bean Common Mosaic Necrosis Virus complete kit / 96	96 tests	
07114C/480	Bean Common Mosaic Necrosis Virus complete kit / 480	480 tests	
07114PC	Positive Control Bean Common Mosaic Necrosis Virus	1 vial (10 tests)	
07114NC	Negative Control Bean Common Mosaic Necrosis Virus	1 vial (10 tests)	





<b>07012</b>	<b>Beet Yellows Closterovirus. BYV</b>	<b>Size</b>	
	(Sugar Beet Yellows Virus). Host range Chenopodiaceae.	DAS ELISA	
	Transmission by aphids		
07012S/100	Beet Yellows Virus set / 100	100 tests	
07012S/300	Beet Yellows Virus set / 300	300 tests	
07012S/500	Beet Yellows Virus set / 500	500 tests	
07012C/096	Beet Yellows Virus complete kit / 96	96 tests	
07012C/480	Beet Yellows Virus complete kit / 480	480 tests	
07012PC	Positive Control Beet Yellows Virus	1 vial (10 tests)	
07012NC	Negative Control Beet Yellows Virus	1 vial (10 tests)	
<b>07013</b>	<b>Broad Bean Stain Comovirus. BBSV</b>	<b>Size</b>	
	Host range: Leguminosae.	DAS ELISA	
	Transmission by beetles, mechanical inoculation, seed		
07013S/100	Broad Bean Stain Virus set / 100	100 tests	
07013S/300	Broad Bean Stain Virus set / 300	300 tests	
07013S/500	Broad Bean Stain Virus set / 500	500 tests	
07013C/096	Beet Yellows Virus complete kit / 96	96 tests	
07013C/480	Beet Yellows Virus complete kit / 480	480 tests	
07013PC	Positive Control Beet Yellows Virus	1 vial (10 tests)	
07013NC	Negative Control Beet Yellows Virus	1 vial (10 tests)	
<b>07015</b>	<b>Broad Bean Wilt Fabavirus. BBWV I</b>	<b>Size</b>	
	(Nasturtium Ringspot Virus, Petunia Ringspot Virus, Pea Streak Virus, Ringmosaikvirus der Kapuzinerkresse). Host range many species.	DAS ELISA	
	Transmission by aphids, mechanical inoculation		
07015S/100	Broad Bean Wilt Virus I set / 100	100 tests	
07015S/300	Broad Bean Wilt Virus I set / 300	300 tests	
07015S/500	Broad Bean Wilt Virus I set / 500	500 tests	
07015S/1000	Broad Bean Wilt Virus I set / 1000	1000 tests	
07015C/096	Broad Bean Wilt Virus I complete kit / 96	96 tests	
07015C/480	Broad Bean Wilt Virus I complete kit / 480	480 tests	
07015C/960	Broad Bean Wilt Virus I complete kit / 960	960 tests	
07015PC	Positive Control Broad Bean Wilt Virus I	1 vial (10 tests)	
07015NC	Negative Control Broad Bean Wilt Virus I	1 vial (10 tests)	
<b>07017</b>	<b>Broad Bean Wilt Fabavirus II. BBWV II</b>	<b>Size</b>	
	(Plantago II virus, Patchouli Mild Mosaic Virus). Host range many species.	DAS ELISA	
	Transmission by aphids, mechanical inoculation		
07017S/100	Broad Bean Wilt Virus II set / 100	100 tests	
07017S/300	Broad Bean Wilt Virus II set / 300	300 tests	
07017S/500	Broad Bean Wilt Virus II set / 500	500 tests	
07017S/1000	Broad Bean Wilt Virus II set / 1000	1000 tests	
07017C/096	Broad Bean Wilt Virus II complete kit / 96	96 tests	
07017C/480	Broad Bean Wilt Virus II complete kit / 480	480 tests	
07017C/960	Broad Bean Wilt Virus II complete kit / 960	960 tests	
07017PC	Positive Control Broad Bean Wilt Virus II	1 vial (10 tests)	
07017NC	Negative Control Broad Bean Wilt Virus II	1 vial (10 tests)	

<b>07016</b>	<b>Brome Mosaic Bromovirus. BMV</b>	<b>Size</b>	
	(Rye Grass Streak Virus, Trespenmosaik Virus, Weidelgrasmosaik Virus). Host range barley, maize, rye grass.	DAS ELISA	
	Transmission by a nematode (Xiphinema)		
07016S/100	Brome Mosaic Virus set / 100	100 tests	
07016S/300	Brome Mosaic Virus set/ 300	300 tests	
07016S/500	Brome Mosaic Virus set / 500	500 tests	
07016S/1000	Brome Mosaic Virus set / 1000	1000 tests	
07016C/096	Brome Mosaic Virus complete kit / 96	96 tests	
07016C/480	Brome Mosaic Virus complete kit / 480	480 tests	
07016C/960	Brome Mosaic Virus complete kit / 960	960 tests	
07016PC	Positive Control Brome Mosaic Virus	1 vial (10 tests)	
07016NC	Negative Control Brome Mosaic Virus	1 vial (10 tests)	
<b>07123</b>	<b>Brome Streak Mosaic Tritimovirus. BSStV</b>	<b>Size</b>	
	Host range: Gramineae.	DAS ELISA	
	Transmission by erythrophoid mites		
07123S/100	Brome Streak Mosaic Virus set / 100	100 tests	
07123S/300	Brome Streak Mosaic Virus set / 300	300 tests	
07123S/500	Brome Streak Mosaic Virus set / 500	500 tests	
07123C/096	Brome Streak Mosaic Virus complete kit / 96	96 tests	
07123C/480	Brome Streak Mosaic Virus complete kit / 480	480 tests	
07123PC	Positive Control Brome Streak Mosaic Virus	1 vial (10 tests)	
07123NC	Negative Control Brome Streak Mosaic Virus	1 vial (10 tests)	
<b>07008</b>	<b>Calibrachoa Mottle Carmovirus. CbMV</b>	<b>Size</b>	
	Host range: Petunia, Calibrachoa.	DAS ELISA	
	Transmission: mechanical inoculation		
07008S/100	Calibrachoa Mottle Virus set / 100	100 tests	
07008S/300	Calibrachoa Mottle Virus set / 300	300 tests	
07008S/500	Calibrachoa Mottle Virus set / 500	500 tests	
07008C/096	Calibrachoa Mottle Virus complete kit / 96	96 tests	
07008C/480	Calibrachoa Mottle Virus complete kit / 480	480 tests	
07008PC	Positive Control Calibrachoa Mottle Virus	1 vial (10 tests)	
07008NC	Negative Control Calibrachoa Mottle Virus	1 vial (10 tests)	
<b>07078</b>	<b>Carnation Latent Carla Virus. CLV</b>	<b>Size</b>	
	(Dulcamara A Virus, Dulcamara B Virus). Host range: carnation spp.	DAS ELISA	
	Transmission by aphids, mechanical inoculation		
07078S/100	Carnation Latent Virus set / 100	100 tests	
07078S/300	Carnation Latent Virus set / 300	300 tests	
07078S/500	Carnation Latent Virus set / 500	500 tests	
07078C/096	Carnation Latent Virus complete kit / 96	96 tests	
07078C/480	Carnation Latent Virus complete kit / 480	480 tests	
07078PC	Positive Control Carnation Latent Virus	1 vial (10 tests)	
07078NC	Negative Control Carnation Latent Virus	1 vial (10 tests)	

<b>07057</b>	<b>Carnation Mottle Carmovirus. CarMV</b>	<b>Size</b>	
	Host range: Begonia, Dianthus spp..	DAS ELISA	
	Transmission by contacts between plants, grafting, mechanical inoculation		
07057S/100	Carnation Mottle Virus set / 100	100 tests	
07057S/300	Carnation Mottle Virus set / 300	300 tests	
07057S/500	Carnation Mottle Virus set / 500	500 tests	
07057C/096	Carnation Mottle Virus complete kit / 96	96 tests	
07057C/480	Carnation Mottle Virus complete kit / 480	480 tests	
07057PC	Positive Control Carnation Mottle Virus	1 vial (10 tests)	
07057NC	Negative Control Carnation Mottle Virus	1 vial (10 tests)	
<b>07019</b>	<b>Carnation Ringspot Dianthovirus. CRSV</b>	<b>Size</b>	
	Host range: carnation spp.	DAS ELISA	
	Transmission by contact between plants, grafting, mechanical inoculation, nematodes		
07019S/100	Carnation Ringspot Virus set / 100	100 tests	
07019S/300	Carnation Ringspot Virus set / 300	300 tests	
07019S/500	Carnation Ringspot Virus set / 500	500 tests	
07019C/096	Carnation Ringspot Virus complete kit / 96	96 tests	
07019C/480	Carnation Ringspot Virus complete kit / 480	480 tests	
07019PC	Positive Control Carnation Ringspot Virus	1 vial (10 tests)	
07019NC	Negative Control Carnation Ringspot Virus	1 vial (10 tests)	
<b>07020</b>	<b>Carnation Vein Mottle Potyvirus. CVMV</b>	<b>Size</b>	
	Host range: carnation spp.	DAS ELISA	
	Transmission by aphids, mechanical inoculation		
07020S/100	Carnation Vein Mottle Virus set / 100	100 tests	
07020S/300	Carnation Vein Mottle Virus set / 300	300 tests	
07020S/500	Carnation Vein Mottle Virus set / 500	500 tests	
07020C/096	Carnation Vein Mottle Virus complete kit / 96	96 tests	
07020C/480	Carnation Vein Mottle Virus complete kit / 480	480 tests	
07020PC	Positive Control Carnation Vein Mottle Virus	1 vial (10 tests)	
07020NC	Negative Control Carnation Vein Mottle Virus	1 vial (10 tests)	
<b>07086</b>	<b>Cauliflower Mosaic Caulimovirus. CaMV</b>	<b>Size</b>	
	(Broccoli Mosaic Virus, Cabbage Mosaic Virus, Cabbage Virus B)	DAS ELISA	
	Host range: Brassicaceae.		
	Transmission by aphids, mechanical inoculation		
07086S/100	Cauliflower Mosaic Virus set / 100	100 tests	
07086S/300	Cauliflower Mosaic Virus set / 300	300 tests	
07086S/500	Cauliflower Mosaic Virus set / 500	500 tests	
07086C/096	Cauliflower Mosaic Virus complete kit / 96	96 tests	
07086C/480	Cauliflower Mosaic Virus complete kit / 480	480 tests	
07086PC	Positive Control Cauliflower Mosaic Virus	1 vial (10 tests)	
07086NC	Negative Control Cauliflower Mosaic Virus	1 vial (10 tests)	









<b>07108</b>	<b>Cucumber Mosaic Cucumovirus DTL/ToRS. CMV DTL/ToRS</b>	<b>Size</b>	
	Artificial mixture DTL/ToRS. (Banana Infectious Chlorosis Virus, Cowpea	DAS ELISA	
	Banding Mosaic Virus, Cowpea Ringspot Virus). Host range: many species.		
	Transmission by aphids, seed		
07108S/100	Cucumber Mosaic Virus DTL/ToRS / 100	100 tests	
07108S/300	Cucumber Mosaic Virus DTL/ToRS / 300	300 tests	
07108S/500	Cucumber Mosaic Virus DTL/ToRS / 500	500 tests	
07108S/1000	Cucumber Mosaic Virus DTL/ToRS / 1000	1000 tests	
07108S/5000	Cucumber Mosaic Virus DTL/ToRS / 5000	5000 tests	
07108C/096	Cucumber Mosaic Virus DTL/ToRS complete kit / 96	96 tests	
07108C/480	Cucumber Mosaic Virus DTL/ToRS complete kit / 480	480 tests	
07108C/960	Cucumber Mosaic Virus DTL/ToRS complete kit / 960	960 tests	
07014PC	Positive Control Cucumber Mosaic Virus DTL	1 vial (10 tests)	
07108NC	Negative Control Cucumber Mosaic Virus	1 vial (10 tests)	
<b>07110</b>	<b>Cucumber Vein Yellowing Ipomovirus. CYVV</b>	<b>Size</b>	
	Host range: Cucurbitaceae	TAS ELISA	
	Transmission: Bemisia tabacchi		
07110S/100	Cucumber Vein Yellowing Virus set / 100	100 tests	
07110S/300	Cucumber Vein Yellowing Virus set / 300	300 tests	
07110S/500	Cucumber Vein Yellowing Virus set / 500	500 tests	
07110C/96	Cucumber Vein Yellowing Virus complete kit / 96	96 tests	
07110C/480	Cucumber Vein Yellowing Virus complete kit / 480	480 tests	
07110PC	Positive Control Cucumber Vein Yellowing Virus	1 vial (10 tests)	
07110NC	Negative Control Cucumber Vein Yellowing Virus	1 vial (10 tests)	
<b>07075</b>	<b>Cucurbit Chlorotic Yellows Crinivirus. CCYV</b>	<b>Size</b>	
	Host range: Cucurbitaceae.	DAS ELISA	
	Transmission by Bemisia tabacchi		
07075S/100	Cucurbit Chlorotic Yellows Virus set / 100	100 tests	
07075S/300	Cucurbit Chlorotic Yellows Virus set / 300	300 tests	
07075S/500	Cucurbit Chlorotic Yellows Virus set / 500	500 tests	
07075C/96	Cucurbit Chlorotic Yellows Virus complete kit / 96	96 tests	
07075C/ 480	Cucurbit Chlorotic Yellows Virus complete kit / 480	480 tests	
07075PC	Positive Control Cucurbit Chlorotic Yellows Virus	1 vial (10 tests)	
07075NC	Negative Control Cucurbit Chlorotic Yellows Virus	1 vial (10 tests)	
<b>07155</b>	<b>Cucurbit Yellow Stunting Disorder Crinivirus. CYSDV</b>	<b>Size</b>	
	Host range: Cucurbitaceae.	DAS ELISA	
	Transmission by Bemisia tabacchi		
07155S/100	Cucurbit Yellow Stunting Disorder Virus set / 100	100 tests	
07155S/300	Cucurbit Yellow Stunting Disorder Virus set / 300	300 tests	
07155S/500	Cucurbit Yellow Stunting Disorder Virus set / 500	500 tests	
07155C/096	Cucurbit Yellow Stunting Disorder Virus complete kit / 96	96 tests	
07155C/480	Cucurbit Yellow Stunting Disorder Virus complete kit / 480	480 tests	
07155PC	Positive Control Cucurbit Yellow Stunting Disorder Virus	1 vial (10 tests)	
07155NC	Negative Control Cucurbit Yellow Stunting Disorder Virus	1 vial (10 tests)	

<b>07018</b>	<b>Cymbidium Mosaic Potexvirus. CymMV</b>	<b>Size</b>	
	(Orchid Mosaic Virus). Host range: orchids.	DAS ELISA	
	Transmission by contacts between plants, mechanical inoculation		
07018S/100	Cymbidium Mosaic Virus set / 100	100 tests	
07018S/300	Cymbidium Mosaic Virus set / 300	300 tests	
07018S/500	Cymbidium Mosaic Virus set / 500	500 tests	
07018S/1000	Cymbidium Mosaic Virus set / 1000	1000 tests	
07018C/96	Cymbidium Mosaic Virus complete kit / 96	96 tests	
07018C/480	Cymbidium Mosaic Virus complete kit / 480	480 tests	
07018C/960	Cymbidium Mosaic Virus complete kit / 960	960 tests	
07018PC	Positive Control Cymbidium Mosaic Virus	1 vial (10 tests)	
07018NC	Negative Control Cymbidium Mosaic Virus	1 vial (10 tests)	
<b>07024</b>	<b>Cymbidium Ringspot Tombusvirus. CymRSV</b>	<b>Size</b>	
	Host range: Cymbidium spp., Trifolium repens.	DAS ELISA	
	Transmission by contact between plants, mechanical inoculation		
07024S/100	Cymbidium Ringspot Virus set / 100	100 tests	
07024S/300	Cymbidium Ringspot Virus set / 300	300 tests	
07024S/500	Cymbidium Ringspot Virus set / 500	500 tests	
07024C/96	Cymbidium Ringspot Virus complete kit	96 tests	
07024C/480	Cymbidium Ringspot Virus complete kit	480 tests	
07024PC	Positive Control Cymbidium Ringspot Virus	1 vial (10 tests)	
07024NC	Negative Control Cymbidium Ringspot Virus	1 vial (10 tests)	
<b>07169</b>	<b>Eggplant Mottled Dwarf Nucleorhabdovirus. EMDV</b>	<b>Size</b>	
	(Tomato Vein Chlorosis Virus, Tomato Yellow Vein Virus, Tomato Vein Clearing Virus).	DAS ELISA	
	Host range: Cucumber, Hibiscus, Petunia, Tobacco, Tomato.		
	Transmission by aphids, leafhoppers, mites, mechanical inoculation		
07169S/100	Eggplant Mottled Dwarf Virus set / 100	100 tests	
07169S/300	Eggplant Mottled Dwarf Virus set / 300	300 tests	
07169S/500	Eggplant Mottled Dwarf Virus set /500	500 tests	
07169C/96	Eggplant Mottled Dwarf Virus complete kit / 96	96 tests	
07169C/480	Eggplant Mottled Dwarf Virus complete kit / 480	480 tests	
07169PC	Positive Control Eggplant Mottled Dwarf Virus	1 vial (10 tests)	
07169NC	Negative Control Eggplant Mottled Dwarf Virus	1 vial (10 tests)	
<b>07025</b>	<b>Freesia Mosaic Potyvirus. FreMV</b>	<b>Size</b>	
	Host range: Freesia.	DAS ELISA	
	Transmission by aphids, mechanical inoculation		
07025S/100	Freesia Mosaic Virus set / 100	100 tests	
07025S/300	Freesia Mosaic Virus set / 300	300 tests	
07025S/500	Freesia Mosaic Virus set / 500	500 tests	
07025C/96	Freesia Mosaic Virus complete kit / 96	96 tests	
07025C/480	Freesia Mosaic Virus complete kit / 480	480 tests	
07025PC	Positive Control Freesia Mosaic Virus	1 vial (10 tests)	
07025NC	Negative Control Freesia Mosaic Virus	1 vial (10 tests)	

<b>07055</b>	<b>Grapevine Fanleaf Nepovirus. GFLV</b>	<b>Size</b>	
	Host range: grapevine.	DAS ELISA	
	Transmission by mechanical inoculation, nematodes		
07055S/100	Grapevine Fanleaf Virus set	100 tests	
07055S/300	Grapevine Fanleaf Virus set 300	300 tests	
07055S/500	Grapevine Fanleaf Virus set 500	500 tests	
07055S/1000	Grapevine Fanleaf Virus set / 1000	1000 tests	
07055C/96	Grapevine Fanleaf Virus complete kit / 96	96 tests	
07055C/480	Grapevine Fanleaf Virus complete kit / 480	480 tests	
07055C/960	Grapevine Fanleaf Virus complete kit / 960	960 tests	
07055PC	Positive Control Grapevine Fanleaf Virus inactivated	1 vial (10 tests)	
07055NC	Negative Control Grapevine Fanleaf Virus	1 vial (10 tests)	
<b>07504</b>	<b>Groundnut Ringspot Tospovirus. GRSV</b>	<b>Size</b>	
	TSWV serogroup (former serogroup II)	DAS ELISA	
	Host range: groundnut, Sol. sessiliflorum.		
	Transmission by mechanical inoculation, thrips		
07504S/100	Groundnut Ringspot Virus set / 100	100 tests	
07504S/300	Groundnut Ringspot Virus set / 300	300 tests	
07504S/500	Groundnut Ringspot Virus set / 500	500 tests	
07504S/1000	Groundnut Ringspot Virus set / 1000	1000 tests	
07503C/96	Groundnut Ringspot Virus complete kit / 96	96 tests	
07504C/480	Groundnut Ringspot Virus complete kit / 480	480 tests	
07504C/960	Groundnut Ringspot Virus complete kit / 960	960 tests	
07504PC	Positive Control Groundnut Ringspot Virus	1 vial (10 tests)	
07504NC	Negative Control Groundnut Ringspot Virus	1 vial (10 tests)	
<b>07105</b>	<b>Hop Mosaic Carlavirus. HpMV</b>	<b>Size</b>	
	Host range: Hop, stinging nettle.	DAS ELISA	
	Transmission by aphids, mechanical inoculation		
07105S/100	Hop Mosaic Virus set / 100	100 tests	
07105S/300	Hop Mosaic Virus set / 300	300 tests	
07105S/500	Hop Mosaic Virus set / 500	500 tests	
07105S/1000	Hop Mosaic Virus set / 1000	1000 tests	
07105C/96	Hop Mosaic Virus complete kit / 96	96 tests	
07105C/480	Hop Mosaic Virus complete kit / 480	480 tests	
07105C/960	Hop Mosaic Virus complete kit / 960	960 tests	
07105PC	Positive Control Hop Mosaic Virus	1 vial (10 tests)	
07105NC	Negative Control Hop Mosaic Virus	1 vial (10 tests)	









<b>07156</b>	<b>Moroccan Watermelon Mosaic Potyvirus. MWMV</b>	<b>Size</b>	
	Host range: Cucurbitaceae.	DAS ELISA	
	Transmission: aphids, mechanical inoculation		
07156S/100	Moroccan Watermelon Mosaic Virus set / 100	100 tests	
07156S/300	Moroccan Watermelon Mosaic Virus set / 300	300 tests	
07156S/500	Moroccan Watermelon Mosaic Virus set / 500	500 tests	
07156S/096	Moroccan Watermelon Mosaic Virus complete kit / 96	96 tests	
07156S/480	Moroccan Watermelon Mosaic Virus complete kit / 480	480 tests	
07156PC	Positive Control Moroccan Watermelon Mosaic Virus	1 vial (10 tests)	
07156NC	Negative Control Moroccan Watermelon Mosaic Virus	1 vial (10 tests)	
<b>07028</b>	<b>Odontoglossum Ringspot Tobamovirus. ORSV</b>	<b>Size</b>	
	Host range: orchids	DAS ELISA	
	Transmission by mechanical inoculation, not by a vector.		
07028S/100	Odontoglossum Ringspot Virus set / 100	100 tests	
07028S/300	Odontoglossum Ringspot Virus set / 300	300 tests	
07028S/500	Odontoglossum Ringspot Virus set / 500	500 tests	
07028C/096	Odontoglossum Ringspot Virus complete kit / 96	96 tests	
07028C/480	Odontoglossum Ringspot Virus complete kit / 480	480 tests	
07028PC	Positive Control Odontoglossum Ringspot Virus	1 vial (10 tests)	
07028NC	Negative Control Odontoglossum Ringspot Virus	1 vial (10 tests)	
<b>07151</b>	<b>Olive Latent Necrovirus-1. OLV-1</b>	<b>Size</b>	
	Host range: Olive.	DAS ELISA	
	Transmission: mechanical inoculation. Soil-transmitted without vector		
07151S/100	Olive Latent Virus-1 set / 100	100 tests	
07151S/300	Olive Latent Virus-1 set / 300	300 tests	
07151S/500	Olive Latent Virus-1 set / 500	500 tests	
07151S/1000	Olive Latent Virus-1 set / 1000	1000 tests	
07151C/096	Olive Latent Virus-1 complete kit / 96	96 tests	
07151C/480	Olive Latent Virus-1 complete kit / 480	480 tests	
07151C/960	Olive Latent Virus-1 complete kit / 960	960 tests	
07151PC	Positive Control Olive Latent Virus-1	1 vial (10 tests)	
07151NC	Negative Control Olive Latent Virus-1	1 vial (10 tests)	
<b>07111</b>	<b>Onion Yellow Dwarf Potyvirus. OYDV</b>	<b>Size</b>	
	Host range: Allium species.	DAS ELISA	
	Transmission by aphids and mechanical inoculation		
07111S/100	Onion Yellow Dwarf Virus set / 100	100 tests	
07111S/300	Onion Yellow Dwarf Virus set / 300	300 tests	
07111S/500	Onion Yellow Dwarf Virus set / 500	500 tests	
07111C/096	Onion Yellow Dwarf Virus complete kit / 96	96 tests	
07111C/480	Onion Yellow Dwarf Virus complete kit / 480	480 tests	
07111PC	Positive Control Onion Yellow Dwarf Virus	1 vial (10 tests)	
07111NC	Negative Control Onion Yellow Dwarf Virus	1 vial (10 tests)	

<b>07060</b>	<b>Papaya Ringspot Potyvirus. PRSV (Watermelon Mosaic Virus I)</b>	<b>Size</b>	
	Host range: Cucurbitaceae, Papaya.	DAS ELISA	
	Transmission by aphids and mechanical inoculation		
07060S/100	Papaya Ringspot Virus set / 100	100 tests	
07060S/300	Papaya Ringspot Virus set / 300	300 tests	
07060S/500	Papaya Ringspot Virus set / 500	500 tests	
07060S/1000	Papaya Ringspot Virus set / 1000	1000 tests	
07060C/096	Papaya Ringspot Virus complete kit / 96	96 tests	
07060C/480	Papaya Ringspot Virus complete kit / 480	480 tests	
07060C/960	Papaya Ringspot Virus complete kit / 960	960 tests	
07060PC	Positive Control Papaya Ringspot Virus	1 vial (10 tests)	
07060NC	Negative Control Papaya Ringspot Virus	1 vial (10 tests)	
<b>07065</b>	<b>Paprika Mild Mottle Tobamovirus. PaMMV</b>	<b>Size</b>	
	Host range: Capsicum species.	DAS ELISA	
	Transmission by mechanical inoculation and possibly by seeds		
07065S/100	Paprika Mild Mottle Virus set / 100	100 tests	
07065S/300	Paprika Mild Mottle Virus set / 300	300 tests	
07065S/500	Paprika Mild Mottle Virus set / 500	500 tests	
07065S/1000	Paprika Mild Mottle Virus set / 1000	1000 tests	
07065C/096	Paprika Mild Mottle Virus complete kit / 96	96 tests	
07065C/480	Paprika Mild Mottle Virus complete kit / 480	480 tests	
07065C/960	Paprika Mild Mottle Virus complete kit / 960	960 tests	
07065PC	Positive Control Paprika Mild Mottle Virus	1 vial (10 tests)	
07065NC	Negative Control Paprika Mild Mottle Virus	1 vial (10 tests)	
<b>07029</b>	<b>Pea Enation Mosaic Enamovirus. PEMV</b>	<b>Size</b>	
	Enamovirus. Host range: Leguminosae.	DAS ELISA	
	Transmission by aphids and mechanical inoculation		
07029S/100	Pea Enation Mosaic Virus set / 100	100 tests	
07029S/300	Pea Enation Mosaic Virus set / 300	300 tests	
07029S/500	Pea Enation Mosaic Virus set / 500	500 tests	
07029C/096	Pea Enation Mosaic Virus complete kit / 96	96 tests	
07029C/480	Pea Enation Mosaic Virus complete kit / 480	480 tests	
07029PC	Positive Control Pea Enation Mosaic Virus	1 vial (10 tests)	
07029NC	Negative Control Pea Enation Mosaic Virus	1 vial (10 tests)	
<b>07030</b>	<b>Pea Seed-borne Mosaic Potyvirus. PSbMV</b>	<b>Size</b>	
	Host range: Leguminosae.	DAS ELISA	
	Transmission by aphids, seed		
07030S/100	Pea Seed-borne Mosaic Virus set / 100	100 tests	
07030S/300	Pea Seed-borne Mosaic Virus set / 300	300 tests	
07030S/500	Pea Seed-borne Mosaic Virus set / 500	500 tests	
07030C/096	Pea Seed-borne Mosaic Virus complete kit / 96	96 tests	
07030C/480	Pea Seed-borne Mosaic Virus complete kit / 480	480 tests	
07030PC	Positive Control Pea Seed-borne Mosaic Virus	1 vial (10 tests)	
07030NC	Negative Control Pea Seed-borne Mosaic Virus	1 vial (10 tests)	

<b>07073</b>	<b>Pelargonium Flower Break Carmovirus. PFBV</b>	<b>Size</b>	
	Host range: Pelargonium species.	DAS ELISA	
	Transmission by contacts, grafting		
07073S/100	Pelargonium Flower Break Virus set / 100	100 tests	
07073S/300	Pelargonium Flower Break Virus set / 300	300 tests	
07073S/500	Pelargonium Flower Break Virus set / 500	500 tests	
07073C/096	Pelargonium Flower Break Virus complete kit / 96	96 tests	
07073C/480	Pelargonium Flower Break Virus complete kit / 480	480 tests	
07073PC	Positive Control Pelargonium Flower Break Virus	1 vial (10 tests)	
07073NC	Negative Control Pelargonium Flower Break Virus	1 vial (10 tests)	
<b>07083</b>	<b>Pelargonium Leafcurl Tombusvirus. PLCV</b>	<b>Size</b>	
	Host range: Pelargonium species.	DAS ELISA	
	Transmission by contacts, grafting and mechanical inoculation		
07083S/100	Pelargonium Leafcurl Virus set / 100	100 tests	
07083S/300	Pelargonium Leafcurl Virus set / 300	300 tests	
07083S/500	Pelargonium Leafcurl Virus set / 500	500 tests	
07083C/096	Pelargonium Leafcurl Virus complete kit / 96	96 tests	
07083C/480	Pelargonium Leafcurl Virus complete kit / 480	480 tests	
07083PC	Positive Control Pelargonium Leafcurl Virus	1 vial (10 tests)	
07083NC	Negative Control Pelargonium Leafcurl Virus	1 vial (10 tests)	
<b>07094</b>	<b>Pelargonium Line Pattern Carmovirus. PLPV</b>	<b>Size</b>	
	Host range: Pelargonium species.	DAS ELISA	
	Transmission by contacts, grafting and mechanical inoculation		
07094S/100	Pelargonium Line Pattern Virus set / 100	100 tests	
07094S/300	Pelargonium Line Pattern Virus set / 300	300 tests	
07094S/500	Pelargonium Line Pattern Virus set / 500	500 tests	
07094C/096	Pelargonium Line Pattern Virus complete kit / 96	96 tests	
07094C/480	Pelargonium Line Pattern Virus complete kit / 480	480 tests	
07094PC	Positive Control Pelargonium Line Pattern Virus	1 vial (10 tests)	
07094NC	Negative Control Pelargonium Line Pattern Virus	1 vial (10 tests)	
	<b>Pepino Latent Carlavirus see Potato Carlavirus S</b>		
<b>07128</b>	<b>Pepino Mosaic Potexvirus. PepMV</b>	<b>Size</b>	
	Host range: pepino, tomato.	DAS ELISA	
	Transmitted by contact, mechanical inoculation and seed		
07128S/100	Pepino Mosaic Virus set / 100	100 tests	
07128S/300	Pepino Mosaic Virus set / 300	300 tests	
07128S/500	Pepino Mosaic Virus set / 500	500 tests	
07128S/1000	Pepino Mosaic Virus set / 1000	1000 tests	
07128S/5000	Pepino Mosaic Virus set / 5000	5000 tests	
07128C/096	Pepino Mosaic Virus complete kit / 96	96 tests	
07128C/480	Pepino Mosaic Virus complete kit / 480	480 tests	
07128C/960	Pepino Mosaic Virus complete kit / 960	960 tests	
07128PC	Positive Control Pepino Mosaic Virus inactivated	1 vial (10 tests)	
07128NC	Negative Control Pepino Mosaic Virus	1 vial (10 tests)	





<b>07109</b>	<b>Poinsettia Mosaic Virus. PnMV</b>	<b>Size</b>	
	Marafivirus. Host range: Euphorbia species.	DAS ELISA	
	Transmission by grafting and mechanical inoculation		
07109S/100	Poinsettia Mosaic Virus set / 100	100 tests	
07109S/300	Poinsettia Mosaic Virus set / 300	300 tests	
07109S/500	Poinsettia Mosaic Virus set / 500	500 tests	
07109C/096	Poinsettia Mosaic Virus complete kit / 96	96 tests	
07109C/480	Poinsettia Mosaic Virus complete kit / 480	480 tests	
07109PC	Positive Control Poinsettia Mosaic Virus	1 vial (10 tests)	
07109NC	Negative Control Poinsettia Mosaic Virus	1 vial (10 tests)	
<b>07039</b>	<b>Poplar Mosaic Virus. PopMV</b>	<b>Size</b>	
	Carlavirus. Host range: poplar species.	DAS ELISA	
	Transmission by grafting and mechanical inoculation		
07039S/100	Poplar Mosaic Virus set / 100	100 tests	
07039S/300	Poplar Mosaic Virus set / 300	300 tests	
07039S/500	Poplar Mosaic Virus set / 500	500 tests	
07039C/096	Poplar Mosaic Virus complete kit / 96	96 tests	
07039C/480	Poplar Mosaic Virus complete kit / 480	480 tests	
07039PC	Positive Control Poplar Mosaic Virus	1 vial (10 tests)	
07039NC	Negative Control Poplar Mosaic Virus	1 vial (10 tests)	
<b>07165</b>	<b>Potato Aucuba Mosaic Potexvirus. PAMV</b>	<b>Size</b>	
	Host range: potato.	DAS ELISA	
	Transmission: aphids, mechanical inoculation. Needs a helper potyvirus		
070165S/100	Potato Aucuba Mosaic Virus set / 100	100 tests	
070165S/300	Potato Aucuba Mosaic Virus set / 300	300 tests	
070165S/500	Potato Aucuba Mosaic Virus set / 500	500 tests	
070165S/1000	Potato Aucuba Mosaic Virus set / 1000	1000 tests	
070165C/096	Potato Aucuba Mosaic Virus complete kit / 96	96 tests	
070165C/480	Potato Aucuba Mosaic Virus complete kit / 480	480 tests	
070165C/960	Potato Aucuba Mosaic Virus complete kit / 960	960 tests	
070165PC	Positive Control Potato Aucuba Mosaic Virus	1 vial (10 tests)	
070165NC	Negative Control Potato Aucuba Mosaic Virus	1 vial (10 tests)	
<b>07145</b>	<b>Potato Black Ringspot Nepovirus. PBRSV</b>	<b>Size</b>	
	(Potato Calico strain of Tobacco Ringspot Virus)	DAS ELISA	
	Host range: Potatoes, other solanaceous plants susceptible.		
	Transmission by grafting and mechanical inoculation		
07145S/100	Potato Black Ringspot Virus set / 100	100 tests	
07145S/300	Potato Black Ringspot Virus set / 300	300 tests	
07145S/500	Potato Black Ringspot Virus set / 500	500 tests	
07145S/1000	Potato Black Ringspot Virus set / 1000	1000 tests	
07145C/096	Potato Black Ringspot Virus complete kit / 96	96 tests	
07145C/480	Potato Black Ringspot Virus complete kit / 480	480 tests	
07145C/960	Potato Black Ringspot Virus complete kit / 960	960 tests	
07145PC	Positive Control Potato Black Ringspot Virus inactivated	1 vial (10 tests)	
07145NC	Negative Control Potato Black Ringspot Virus	1 vial (10 tests)	









<b>07080</b>	<b>Raspberry Bushy Dwarf Idaeovirus. RBDV</b>	<b>Size</b>	
	Host range: Rubus species.	DAS ELISA	
	Transmission by grafting, mechanical inoculation and seed		
07080S/100	Raspberry Bushy Dwarf Virus set / 100	100 tests	
07080S/300	Raspberry Bushy Dwarf Virus set / 300	300 tests	
07080S/500	Raspberry Bushy Dwarf Virus set / 500	500 tests	
07080S/1000	Raspberry Bushy Dwarf Virus set / 1000	1000 tests	
07080C/96	Raspberry Bushy Dwarf Virus complete kit / 96	96 tests	
07080C/480	Raspberry Bushy Dwarf Virus complete kit / 480	480 tests	
07080C/960	Raspberry Bushy Dwarf Virus complete kit / 960	960 tests	
07080PC	Positive Control Raspberry Bushy Dwarf Virus	1 vial (10 tests)	
07080NC	Negative Control Raspberry Bushy Dwarf Virus	1 vial (10 tests)	
<b>07141</b>	<b>Raspberry Ringspot Nepovirus Broad Range. RpRSV</b>	<b>Size</b>	
	Artificial mixture of antisera (ch, g, r)	DAS ELISA	
	Host range: grapevine, Rubus species, strawberry.		
	Transmission by mechanical inoculation, nematodes, pollen-to-seed, seed		
07141S/100	Raspberry Ringspot Virus set / 100	100 tests	
07141S/300	Raspberry Ringspot Virus set / 300	300 tests	
07141S/500	Raspberry Ringspot Virus set / 500	500 tests	
07141S/1000	Raspberry Ringspot Virus set / 1000	1000 tests	
07141C/96	Raspberry Ringspot Virus complete kit / 96	96 tests	
07141C/480	Raspberry Ringspot Virus complete kit / 480	480 tests	
07141C/960	Raspberry Ringspot Virus complete kit / 960	960 tests	
07144PC	Positive Control Raspberry Ringspot Virus g inactivated	1 vial (10 tests)	
07151NC	Negative Control Raspberry Ringspot Virus	1 vial (10 tests)	
<b>07142</b>	<b>Raspberry Ringspot Nepovirus (cherry isolate). RpRSV ch</b>	<b>Size</b>	
		DAS ELISA	
07142S/100	Raspberry Ringspot Virus ch set / 100	100 tests	
07142S/300	Raspberry Ringspot Virus ch set / 300	300 tests	
07142S/500	Raspberry Ringspot Virus ch set / 500	500 tests	
07142C/96	Raspberry Ringspot Virus ch complete kit / 96	96 tests	
07142C/480	Raspberry Ringspot Virus ch complete kit / 480	480 tests	
072142PC	Positive Control Raspberry Ringspot Virus ch inactivated	1 vial (10 tests)	
07142NC	Negative Control Raspberry Ringspot Virus ch	1 vial (10 tests)	
<b>07143</b>	<b>Raspberry Ringspot Nepovirus (raspberry isolate). RpRSV r</b>	<b>Size</b>	
		DAS ELISA	
07143S/100	Raspberry Ringspot Virus r set / 100	100 tests	
07143S/300	Raspberry Ringspot Virus r set / 300	300 tests	
07143S/500	Raspberry Ringspot Virus r set / 500	500 tests	
07143C/96	Raspberry Ringspot Virus r complete kit / 96	96 tests	
07143C/480	Raspberry Ringspot Virus r complete kit / 480	480 tests	
07154PC	Positive Control Raspberry Ringspot Virus r inactivated	1 vial (10 tests)	
07154NC	Negative Control Raspberry Ringspot Virus r	1 vial (10 tests)	

<b>07144</b>	<b>Raspberry Ringspot Nepovirus (grapevine isolate). RpRSV g</b>	<b>Size</b>	
		DAS ELISA	
07144S/100	Raspberry Ringspot Virus g set / 100	100 tests	
07144S/300	Raspberry Ringspot Virus g set / 300	300 tests	
07144S/500	Raspberry Ringspot Virus g set / 500	500 tests	
07144C/096	Raspberry Ringspot Virus g complete kit / 96	96 tests	
07144C/480	Raspberry Ringspot Virus g complete kit / 480	480 tests	
07144PC	Positive Control Raspberry Ringspot Virus g inactivated	1 vial (10 tests)	
07144NC	Negative Control Raspberry Ringspot Virus g	1 vial (10 tests)	
<b>07040</b>	<b>Red Clover Mottle Comovirus. RCMV</b>	<b>Size</b>	
	Host range: Trifolium pratense.	DAS ELISA	
	Transmission by beetles and mechanical inoculation		
07040S/100	Red Clover Mottle Virus set / 100	100 tests	
07040S/300	Red Clover Mottle Virus set / 300	300 tests	
07040S/500	Red Clover Mottle Virus set / 500	500 tests	
07040S/1000	Red Clover Mottle Virus set / 1000	1000 tests	
07040C/096	Red Clover Mottle Virus complete kit / 96	96 tests	
07040C/480	Red Clover Mottle Virus complete kit / 480	480 tests	
07040C/960	Red Clover Mottle Virus complete kit / 960	960 tests	
07040PC	Positive Control Red Clover Mottle Virus	1 vial (10 tests)	
07040NC	Negative Control Red Clover Mottle Virus	1 vial (10 tests)	
<b>07133</b>	<b>Rice Yellow Mottle Sobemovirus. RYMV</b>	<b>Size</b>	
	Host range: rice.	DAS ELISA	
	Transmission by beetles and mechanical inoculation		
07133S/100	Rice Yellow Mottle Virus set / 100	100 tests	
07133S/300	Rice Yellow Mottle Virus set / 300	300 tests	
07133S/500	Rice Yellow Mottle Virus set / 500	500 tests	
07133C/096	Rice Yellow Mottle Virus complete kit / 96	96 tests	
07133C/480	Rice Yellow Mottle Virus complete kit / 480	480 tests	
07133PC	Positive Control Rice Yellow Mottle Virus	1 vial (10 tests)	
07133NC	Negative Control Rice Yellow Mottle Virus	1 vial (10 tests)	
<b>07173</b>	<b>Soil-borne Cereal Mosaic Furovirus. SbCMV polyclonal/ monoclonal</b>	<b>Size</b>	
	Host range: barley, wheat, rye.	TAS ELISA	
	Transmission by a soil-borne fungus		
07173S/100	Soil-borne Cereal Mosaic Virus set / 100	100 tests	
07173S/300	Soil-borne Cereal Mosaic Virus set / 300	300 tests	
07173S/500	Soil-borne Cereal Mosaic Virus set / 500	500 tests	
07173C/096	Soil-borne Cereal Mosaic Virus complete kit / 96	96 test	
07173C/480	Soil-borne Cereal Mosaic Virus complete kit / 480	480 tests	
07173PC	Soil-borne Cereal Mosaic Virus Positive Control	1 vial (10 tests)	
07173NC	Soil-borne Cereal Mosaic Virus Negative Control	1 vial (10 tests)	

<b>07174</b>	<b>Soil-borne Wheat Mosaic Furovirus. SbWMV monoclonal / monoclonal</b>	<b>Size</b>	
	Furovirus. Host range: barley, wheat, rye.	DAS ELISA	
	Transmission by a soil-borne fungus		
07174S/100	Soil-borne Wheat Mosaic Virus set / 100	100 tests	
07174S/300	Soil-borne Wheat Mosaic Virus set / 300	300 tests	
07174S/500	Soil-borne Wheat Mosaic Virus set / 500	500 tests	
07174C/096	Soil-borne Wheat Mosaic Virus complete kit / 96	96 tests	
07174C/480	Soil-borne Wheat Mosaic Virus complete kit / 480	480 tests	
07174PC	Positive Control Soil-borne Wheat Mosaic Virus	1 vial (10 tests)	
07174NC	Negative Control Soil-borne Wheat Mosaic Virus	1 vial (10 tests)	
<b>07106</b>	<b>Sorghum Mosaic Potyvirus. SrMV</b>	<b>Size</b>	
	Potyvirus. Host range Sorghum, Sugar Cane.	DAS ELISA	
	Transmission by aphids		
07106S/100	Sorghum Mosaic Virus set / 100	100 tests	
07106S/300	Sorghum Mosaic Virus set / 300	300 tests	
07106S/500	Sorghum Mosaic Virus set / 500	500 tests	
07106S/1000	Sorghum Mosaic Virus set / 1000	1000 tests	
07106C/096	Sorghum Mosaic Virus complete kit / 96	96 tests	
07106C/480	Sorghum Mosaic Virus complete kit / 480	480 tests	
07106C/960	Sorghum Mosaic Virus complete kit / 960	960 tests	
07106PC	Positive Control Sorghum Mosaic Virus	1 vial (10 tests)	
07106NC	Negative Control Sorghum Mosaic Virus	1 vial (10 tests)	
<b>07074</b>	<b>Soybean Mosaic Potyvirus. SMV</b>	<b>Size</b>	
	Host range: soybeans	DAS ELISA	
	Transmission by aphids, mechanical inoculation, pollen-to-seed, seed		
07074S/100	Soybean Mosaic Virus set / 100	100 tests	
07074S/300	Soybean Mosaic Virus set / 300	300 tests	
07074S/500	Soybean Mosaic Virus set / 500	500 tests	
07074C/096	Soybean Mosaic Virus complete kit / 96	96 tests	
07074C/480	Soybean Mosaic Virus complete kit / 480	480 tests	
07074PC	Positive Control Soybean Mosaic Virus	1 vial (10 tests)	
07074NC	Negative Control Soybean Mosaic Virus	1 vial (10 tests)	
<b>07089</b>	<b>Squash Mosaic Comovirus. SqMV</b>	<b>Size</b>	
	Host range: Cucurbitaceae.	DAS ELISA	
	Transmission by beetles and mechanical inoculation		
07089S/100	Squash Mosaic Virus set / 100	100 tests	
07089S/300	Squash Mosaic Virus set / 300	300 tests	
07089S/500	Squash Mosaic Virus set / 500	500 tests	
07089C/096	Squash Mosaic Virus complete kit / 480	96 tests	
07089C/480	Squash Mosaic Virus complete kit / 960	480 tests	
07089PC	Positive Control Squash Mosaic Virus	1 vial (10 tests)	
07089NC	Negative Control Squash Mosaic Virus	1 vial (10 tests)	



<b>07042</b>	<b>Tobacco Mosaic Tobamovirus (TMV strain U1). TMV</b>	<b>Size</b>	
	Host range: many species.	DAS ELISA	
	Transmission by contact, grafting, mechanical inoculation, seed, no vector		
07042S/100	Tobacco Mosaic Virus set / 100	100 tests	
07042S/300	Tobacco Mosaic Virus set / 300	300 tests	
07042S/500	Tobacco Mosaic Virus set / 500	500 tests	
07042S/1000	Tobacco Mosaic Virus set / 1000	1000 tests	
07042S/5000	Tobacco Mosaic Virus set / 5000	5000 tests	
07042C/096	Tobacco Mosaic Virus complete kit / 96	96 tests	
07042C/480	Tobacco Mosaic Virus complete kit / 480	480 tests	
07042C/960	Tobacco Mosaic Virus complete kit / 960	960 tests	
07042PC	Positive Control Tobacco Mosaic Virus	1 vial (10 tests)	
07042NC	Negative Control Tobacco Mosaic Virus	1 vial (10 tests)	
<b>07036</b>	<b>Tobacco Necrosis Necrovirus Broad Range (artificial mixture). TNV</b>	<b>Size</b>	
	Host range: many species.	DAS ELISA	
	Transmission by Olpidium brassicae and by mechanical inoculation		
07036S/100	Tobacco Necrosis Virus set / 100	100 tests	
07036S/300	Tobacco Necrosis Virus set / 300	300 tests	
07036S/500	Tobacco Necrosis Virus set / 500	500 tests	
07036S/1000	Tobacco Necrosis Virus set / 1000	1000 tests	
07036C/096	Tobacco Necrosis Virus complete kit / 96	96 tests	
07036C/480	Tobacco Necrosis Virus complete kit / 480	480 tests	
07036C/960	Tobacco Necrosis Virus complete kit / 960	960 tests	
07046PC	Positive Control Tobacco Necrosis Virus A	1 vial (10 tests)	
07036NC	Negative Control Tobacco Necrosis Virus	1 vial (10 tests)	
<b>07046</b>	<b>Tobacco Necrosis Necrovirus A. TNV A</b>	<b>Size</b>	
		DAS ELISA	
07046S/100	Tobacco Necrosis Virus A set / 100	100 tests	
07046S/300	Tobacco Necrosis Virus A set / 300	300 tests	
07046S/500	Tobacco Necrosis Virus A set / 500	500 tests	
07046C/096	Tobacco Necrosis Virus A complete kit / 96	96 tests	
07046C/480	Tobacco Necrosis Virus A complete kit / 480	480 tests	
07046PC	Positive Control Tobacco Necrosis Virus A	1 vial (10 tests)	
07046NC	Negative Control Tobacco Necrosis Virus A	1 vial (10 tests)	
<b>07035</b>	<b>Tobacco Necrosis Necrovirus (cherry isolate). TNV ch</b>	<b>Size</b>	
		DAS ELISA	
07035S/100	Tobacco Necrosis Virus ch set / 100	100 tests	
07035S/300	Tobacco Necrosis Virus ch set / 300	300 tests	
07035S/500	Tobacco Necrosis Virus ch set / 500	500 tests	
07035C/096	Tobacco Necrosis Virus ch complete kit / 96	96 tests	
07035C/480	Tobacco Necrosis Virus ch complete kit / 480	480 tests	
07035PC	Positive Control Tobacco Necrosis Virus ch	1 vial (10 tests)	
07035NC	Negative Control Tobacco Necrosis Virus ch	1 vial (10 tests)	

<b>07043</b>	<b>Tobacco Necrosis Necrovirus E. TNV E</b>	<b>Size</b>	
		DAS ELISA	
07043S/100	Tobacco Necrosis Virus E set / 100	100 tests	
07043S/300	Tobacco Necrosis Virus E set / 300	300 tests	
07043S/500	Tobacco Necrosis Virus E set / 500	500 tests	
07043C/096	Tobacco Necrosis Virus E complete kit / 96	96 tests	
07043C/480	Tobacco Necrosis Virus E complete kit / 480	480 tests	
07043PC	Positive Control Tobacco Necrosis Virus E	1 vial (10 tests)	
07043NC	Negative Control Tobacco Necrosis Virus E	1 vial (10 tests)	
<b>07152</b>	<b>Tobacco Rattle Tobravirus BroadRange. TRV</b>	<b>Size</b>	
	Artificial mixture of antisera. Host range: many species.	DAS ELISA	
	Transmission by grafting, mechanical inoculation, nematodes, seed		
07152S/100	Tobacco Rattle Virus set / 100	100 tests	
07152S/300	Tobacco Rattle Virus set / 300	300 tests	
07152S/500	Tobacco Rattle Virus set / 500	500 tests	
07152S/1000	Tobacco Rattle Virus set / 1000	1000 tests	
07152C/096	Tobacco Rattle Virus complete kit / 96	96 tests	
07152C/480	Tobacco Rattle Virus complete kit / 480	480 tests	
07152C/960	Tobacco Rattle Virus complete kit / 960	960 tests	
07044PC	Positive Control Tobacco Rattle Virus K	1 vial (10 tests)	
07152NC	Negative Control Tobacco Rattle Virus	1 vial (10 tests)	
<b>07116</b>	<b>Tobacco Rattle Tobravirus (Jeffersonia Isolate). TRV J</b>	<b>Size</b>	
		DAS ELISA	
07116S/100	Tobacco Rattle Virus J set / 100	100 tests	
07116S/300	Tobacco Rattle Virus J set / 300	300 tests	
07116S/500	Tobacco Rattle Virus J set / 500	500 tests	
07116C/096	Tobacco Rattle Virus J complete kit / 96	96 tests	
07116C/480	Tobacco Rattle Virus J complete kit / 480	480 tests	
07116PC	Positive Control Tobacco Rattle Virus J	1 vial (10 tests)	
07116NC	Negative Control Tobacco Rattle Virus J	1 vial (10 tests)	
<b>07044</b>	<b>Tobacco Rattle Tobravirus K. TRV K</b>	<b>Size</b>	
		DAS ELISA	
07044S/100	Tobacco Rattle Virus K set / 100	100 tests	
07044S/300	Tobacco Rattle Virus K set / 300	300 tests	
07044S/500	Tobacco Rattle Virus K set / 500	500 tests	
07044C/096	Tobacco Rattle Virus K complete kit / 96	96 tests	
07044C/480	Tobacco Rattle Virus K complete kit / 480	480 tests	
07044PC	Positive Control Tobacco Rattle Virus K	1 vial (10 tests)	
07044NC	Negative Control Tobacco Rattle Virus K	1 vial (10 tests)	

<b>07113</b>	<b>Tobacco Rattle Tobravirus M. TRV M</b>	<b>Size</b>	
		DAS ELISA	
07113S/100	Tobacco Rattle Virus M set / 100	100 tests	
07113S/300	Tobacco Rattle Virus M set / 300	300 tests	
07113S/500	Tobacco Rattle Virus M set / 500	500 tests	
07113C/096	Tobacco Rattle Virus M complete kit / 96	96 tests	
07113C/480	Tobacco Rattle Virus M complete kit / 480	480 tests	
07113PC	Positive Control Tobacco Rattle Virus M	1 vial (10 tests)	
07113NC	Negative Control Tobacco Rattle Virus M	1 vial (10 tests)	
<b>07168</b>	<b>Tobacco Ringspot Nepovirus. TRSV</b>		
	Host range: cucumber, soybean, tomato.	DAS ELISA	
	Transmission by mechanical inoculation, nematodes, other vectors, seed		
07168S/100	Tobacco Ringspot Virus set / 100	100 tests	
07168S/300	Tobacco Ringspot Virus set / 300	300 tests	
07168S/500	Tobacco Ringspot Virus set / 500	500 tests	
07168S/1000	Tobacco Ringspot Virus set / 1000	1000 tests	
07168C/096	Tobacco Ringspot Virus complete kit / 96	96 tests	
07168C/480	Tobacco Ringspot Virus complete kit / 480	480 tests	
07168C/960	Tobacco Ringspot Virus complete kit /960	960 tests	
07210PC	Positive Control Quarantine GAR unspecific	1 vial (10 tests)	
07168NC	Negative Control Tobacco Ringspot Virus	1 vial (10 tests)	
<b>07184</b>	<b>Tobamoscreen® I detecting PMMoV, TMV and ToMV designed for testing Tobamoviruses in pepper species</b>	<b>Size</b>	
		DAS ELISA	
07184S/100	Tobamoscreen® I set / 100	100 tests	
07184S/300	Tobamoscreen® I set /300	300 tests	
07184S/500	Tobamoscreen® I set / 500	500 tests	
07184S/1000	Tobamoscreen® I set / 1000	1000 tests	
07184S/5000	Tobamoscreen® I set / 5000	5000 tests	
07184C/096	Tobamoscreen® I complete kit	96 tests	
07185C/480	Tobamoscreen® I complete kit	480 tests	
07185C/960	Tobamoscreen® I complete kit	960 tests	
07096PC	Positive Control Pepper Mild Mottle Virus	1 vial (10 tests)	
07042PC	Positive Control Tobacco Mosaic Virus	1 vial (10 tests)	
07047PC	Positive Control Tomato Mosaic Virus	1 vial (10 tests)	
07184NC	Negative Control Tobamoscreen® I	1 vial (10 tests)	
<b>07045</b>	<b>Tomato Aspermy Cucumovirus. TAV ( Chrysanthemum Aspermy Virus )</b>	<b>Size</b>	
	Host range: Chrysanthemum myrtifolium, tomato.	DAS ELISA	
	Transmission by grafting, mechanical inoculation and seed		
07045S/100	Tomato Aspermy Virus set / 100	100 tests	
07045S/300	Tomato Aspermy Virus set / 300	300 tests	
07045S/500	Tomato Aspermy Virus set / 500	500 tests	
07045C/096	Tomato Aspermy Virus complete kit / 96	96 tests	
07045C/480	Tomato Aspermy Virus complete kit / 480	480 tests	
07045PC	Positive Control Tomato Aspermy Virus	1 vial (10 tests)	
07045NC	Negative Control Tomato Aspermy Virus	1 vial (10 tests)	



<b>07062</b>	<b>Tomato Blackring Nepovirus. TBRV (Potato Bouquet Virus)</b>	<b>Size</b>	
	Host range: many species.	DAS ELISA	
	Transmission by grafting, mechanical inoculation, nematodes and seed		
07062S/100	Tomato Blackring Virus set / 100	100 tests	
07062S/300	Tomato Blackring Virus set / 300	300 tests	
07062S/500	Tomato Blackring Virus set / 500	500 tests	
07062C/096	Tomato Blackring Virus complete kit / 96	96 tests	
07062C/480	Tomato Blackring Virus complete kit / 480	480 tests	
07062PC	Positive Control Tomato Blackring Virus inactivated	1 vial (10 tests)	
07062NC	Negative Control Tomato Blackring Virus	1 vial (10 tests)	
<b>07067</b>	<b>Tomato Bushy Stunt Tombusvirus. TBSV</b>	<b>Size</b>	
	Host range: solanaceous species, tulips etc.	DAS ELISA	
	Transmission by grafting, mechanical inoculation and seed		
07067S/100	Tomato Bushy Stunt Virus set /100	100 tests	
07067S/300	Tomato Bushy Stunt Virus set / 300	300 tests	
07067S/500	Tomato Bushy Stunt Virus set / 500	500 tests	
07067S/1000	Tomato Bushy Stunt Virus set / 1000	1000 tests	
07067S/5000	Tomato Bushy Stunt Virus set / 5000	5000 tests	
07067C/096	Tomato Bushy Stunt Virus complete kit / 96	96 tests	
07067C/480	Tomato Bushy Stunt Virus complete kit / 480	480 tests	
07067C/960	Tomato Bushy Stunt Virus complete kit / 960	960 tests	
07067PC	Positive Control Tomato Bushy Stunt Virus	1 vial (10 tests)	
07067NC	Negative Control Tomato Bushy Stunt Virus	1 vial (10 tests)	
<b>07101</b>	<b>Tomato Chlorosis Crinivirus. ToCV</b>	<b>Size</b>	
	Host range: Solanaceae and several members of other families	DAS ELISA	
	Transmission:white flies		
07101S/100	Tomato Chlorosis Virus set / 100	100 tests	
07101S/300	Tomato Chlorosis Virus set / 300	300 tests	
07101S/500	Tomato Chlorosis Virus set / 500	500 tests	
07101C/96	Tomato Chlorosis Viruscomplete kit / 96	96 tests	
07101C/480	Tomato Chlorosis Virus complete kit / 480	480 tests	
07101PC	Positive Control Tomato Chlorosis Virus	1 vial (10 tests)	
07101NC	Negative Control Tomato Chlorosis Virud	1 vial (10 tests)	
<b>07503</b>	<b>Tomato Chlorotic Spot Tospovirus. TCSV</b>	<b>Size</b>	
	TSWV serogroup (former serogroup II) Host range: lettuce, tomato.	DAS ELISA	
	Transmission by mechanical inoculation and thrips		
07503S/100	Tomato Chlorotic Spot Virus set / 100	100 tests	
07503S/300	Tomato Chlorotic Spot Virus set / 300	300 tests	
07503S/500	Tomato Chlorotic Spot Virus set / 500	500 tests	
07503S/1000	Tomato Chlorotic Spot Virus set / 1000	1000 tests	
07603C/096	Tomato Chlorotic Spot Virus complete kit / 96	96 tests	
07503C/480	Tomato Chlorotic Spot Virus complete kit / 480	480 tests	
07503C/960	Tomato Chlorotic Spot Virus complete kit / 960	960 tests	
07503PC	Positive Control Tomato Chlorotic Spot Virus	1 vial (10 tests)	
07503NC	Negative Control Tomato Chlorotic Spot Virus	1 vial (10 tests)	





<b>07506</b>	<b>TSWV/INSV (artificial mixture of antisera)</b>	<b>Size</b>	
		DAS ELISA	
07506S/100	TSWV/INSV set / 100	100 tests	
07506S/300	TSWV/INSV set / 300	300 tests	
07506S/500	TSWV/INSV set / 500	500 tests	
07506S/1000	TSWV/INSV set / 1000	1000 tests	
07506C/096	TSWV/INSV complete kit / 96	96 tests	
07506C/480	TSWV/INSV complete kit / 480	480 tests	
07506C/960	TSWV/INSV complete kit / 960	960 tests	
07501PC	Positive Control TSWV inactivated	1 vial (10 tests)	
07505PC	Positive Control INSV	1 vial (10 tests)	
07506NC	Negative Control TSWV/INSV	1 vial (10 tests)	
<b>07177</b>	<b>Tomato Yellow Leafcurl Bigeminivirus polyclonal/monoclonal. TYLCV</b>	<b>Size</b>	
	<b>detects TYLCV and TYLCSV</b>	TAS ELISA	
	Bigeminivirus. Host range: tomato.		
	Transmission by Bemisia tabacchi		
07177S/ 100	Tomato Yellow Leafcurl Virus set	100 tests	
07177S/ 300	Tomato Yellow Leafcurl Virus set / 300	300 tests	
07177S/500	Tomato Yellow Leafcurl Virus set / 500	500 tests	
07177C/096	Tomato Yellow Leafcurl Virus complete kit / 96	96 tests	
07177C/480	Tomato Yellow Leafcurl Virus complete kit / 480	480 tests	
07177PC	Positive Control Tomato Yellow Leafcurl Virus inactivated	1 vial (10 tests)	
07177NC	Negative Control Tomato Yellow Leafcurl Virus	1 vial (10 tests)	
<b>07510</b>	<b>Tosposcreen detects TWSV, INSV, TCSV, GRSV, and CSNV</b>	<b>Size</b>	
		DAS ELISA	
07510/100	Tosposcreen set / 100	100 tests	
07510/300	Tosposcreen set / 300	300 tests	
07510S/500	Tosposcreen set / 500	500 tests	
07510S/1000	Tosposcreen set 1000	1000 tests	
07510S/5000	Tosposcreen set / 5000	5000 tests	
07510C/096	Tosposcreen complete kit / 96	96 tests	
07510C/480	Tosposcreen complete kit / 480	480 tests	
07510C/960	Tosposcreen complete kit / 960	960 tests	
07501PC	Positive Control TSWV inactivated	1 vial (10 tests)	
07505PC	Positive Control INSV	1 vial (10 tests)	
07503PC	Positive Control TCSV	1 vial (10 tests)	
07504PC	Positive Control GRSV	1 vial (10 tests)	
07510NC	Negative Control Tosposcreen	1 vial (10 tests)	

<b>07049</b>	<b>Turnip Mosaic Potyvirus (Cabbage Black Ring Virus). TuMV</b>	<b>Size</b>	
	Host range: Brassicaceae, Solanaceae, others.	DAS ELISA	
	Transmission by aphids and mechanical inoculation		
07049S/100	Turnip Mosaic Virus set / 100	100 tests	
07049S/300	Turnip Mosaic Virus set / 300	300 tests	
07049S/500	Turnip Mosaic Virus set / 500	500 tests	
07049C/96	Turnip Mosaic Virus complete kit / 96	96 tests	
07049C/480	Turnip Mosaic Virus complete kit / 480	480 tests	
07049PC	Positive Control Turnip Mosaic Virus	1 vial (10 tests)	
07049NC	Negative Control Turnip Mosaic Virus	1 vial (10 tests)	
<b>07091</b>	<b>Turnip Yellow Mosaic Tymovirus. TYMV</b>	<b>Size</b>	
	Host range: Brassicacea.	DAS ELISA	
	Transmission by flea beetles, grafting, mechanical inoculation, seed		
07091S/100	Turnip Yellow Mosaic Virus set / 100	100 tests	
07091S/300	Turnip Yellow Mosaic Virus set / 300	300 tests	
07091S/500	Turnip Yellow Mosaic Virus set / 500	500 tests	
07091C/96	Turnip Yellow Mosaic Virus complete kit / 96	96 tests	
07091C/480	Turnip Yellow Mosaic Virus complete kit / 480	480 tests	
07091PC	Positive Control Turnip Yellow Mosaic Virus	1 vial (10 tests)	
07091NC	Negative Control Turnip Yellow Mosaic Virus	1 vial (10 tests)	
<b>07009</b>	<b>Turnip Yellows Polerovirus. TYV</b>	<b>Size</b>	
	Beet Mild Yellowing Virus. Host range: beta spp., others.	DAS ELISA	
	Transmission by aphids		
07009S/100	Turnip Yellows Virus set / 100	100 tests	
07009S/300	Turnip Yellows Virus set / 300	300 tests	
07009S/500	Turnip Yellows Virus set / 500	500 tests	
07009C/96	Turnip Yellows Virus complete kit / 96	96 tests	
07009C/480	Turnip Yellows Virus complete kit / 480	480 tests	
07009PC	Positive Control Turnip Yellows Virus	1 vial (10 tests)	
07009NC	Negative Control Turnip Yellows Virus	1 vial (10 tests)	
<b>07095</b>	<b>Watermelon Mosaic Potyvirus II. WMV II</b>	<b>Size</b>	
	Host range: Cucurbitaceae.	DAS ELISA	
	Transmission by aphids and mechanical inoculation		
07095S/100	Watermelon Mosaic Virus II set / 100	100 tests	
07095S/300	Watermelon Mosaic Virus II set / 300	300 tests	
07095S/500	Watermelon Mosaic Virus II set / 500	500 tests	
07095C/96	Watermelon Mosaic Virus II complete kit / 96	96 tests	
07095C/480	Watermelon Mosaic Virus II complete kit / 480	480 tests	
07095PC	Positive Control Watermelon Mosaic Virus II	1 vial (10 tests)	
07095NC	Negative Control Watermelon Mosaic Virus II	1 vial (10 tests)	

<b>07082</b>	<b>Wheat Dwarf Monogeminivirus. WDV</b>	<b>Size</b>	
	Host range: barley, wheat.	DAS ELISA	
	Transmission by a cicada ( <i>Psammotettix alienus</i> )		
07082S/100	Wheat Dwarf Virus set / 100	100 tests	
07082S/300	Wheat Dwarf Virus set / 300	300 tests	
07082S/500	Wheat Dwarf Virus set / 500	500 tests	
07082S/1000	Wheat Dwarf Virus set / 1000	1000 tests	
07082C/096	Wheat Dwarf Virus complete kit / 96	96 tests	
07082C/480	Wheat Dwarf Virus complete kit / 480	480 tests	
07082C/960	Wheat Dwarf Virus complete kit / 960	960 tests	
07082PC	Positive Control Wheat Dwarf Virus	1 vial (10 tests)	
07082NC	Negative Control Wheat Dwarf Virus	1 vial (10 tests)	
<b>07171</b>	<b>Wheat Spindle Streak Mosaic Bymovirus. WSSMV</b>	<b>Size</b>	
	Polyclonal/monoclonal. Host range: rye, wheat.	TAS ELISA	
	Transmission by <i>Polymyxa graminis</i> and by mechanical inoculation		
07171S/100	Wheat Spindle Streak Mosaic Virus set / 100	100 tests	
07171S/300	Wheat Spindle Streak Mosaic Virus set / 300	300 tests	
07171S/500	Wheat Spindle Streak Mosaic Virus set / 500	500 tests	
07171C/096	Wheat Spindle Streak Mosaic Virus complete kit / 96	96 tests	
07171C/480	Wheat Spindle Streak Mosaic Virus complete kit / 480	480 tests	
07171PC	Positive Control Wheat Spindle Streak Mosaic Virus	1 vial (10 tests)	
07171NC	Negative Control Wheat Spindle Streak Mosaic Virus	1 vial (10 tests)	
<b>07048</b>	<b>Wheat Streak Mosaic Rymovirus. WSMV</b>	<b>Size</b>	
	Host range: maize, wheat, others.	DAS ELISA	
	Transmission by mites, mechanical inoculation, seed at low rate		
07048S/100	Wheat Streak Mosaic Virus set / 100	100 tests	
07048S/300	Wheat Streak Mosaic Virus set / 300	300 tests	
07048S/500	Wheat Streak Mosaic Virus set / 500	500 tests	
07048C/096	Wheat Streak Mosaic Virus complete kit / 96	96 tests	
07048C/480	Wheat Streak Mosaic Virus complete kit / 480	480 tests	
07048PC	Positive Control Wheat Streak Mosaic Virus	1 vial (10 tests)	
07048NC	Negative Control Wheat Streak Mosaic Virus	1 vial (10 tests)	
<b>07167</b>	<b>Zucchini Green Mottle Mosaic Tobamovirus. ZGMMV</b>	<b>Size</b>	
	Host range: Cucurbitaceae.	DAS ELISA	
	Transmission by direct contact very likely		
07167S/100	Zucchini Green Mottle Mosaic Virus set / 100	100 tests	
07167S/300	Zucchini Green Mottle Mosaic Virus set / 300	300 tests	
07167S/500	Zucchini Green Mottle Mosaic Virus set / 500	500 tests	
07167S/1000	Zucchini Green Mottle Mosaic Virus set / 1000	1000 tests	
07167C/096	Zucchini Green Mottle Mosaic Virus complete kit / 96	96 tests	
07167C/480	Zucchini Green Mottle Mosaic Virus complete kit / 480	480 tests	
07167C/960	Zucchini Green Mottle Mosaic Virus complete kit / 960	960 tests	
07167PC	Positive Control Zucchini Green Mottle Mosaic Virus	1 vial (10 tests)	
07167NC	Negative Control Zucchini Green Mottle Mosaic Virus	1 vial (10 tests)	

<b>07104</b>	<b>Zucchini Yellow Fleck Virus. ZYFV</b>	<b>Size</b>	
	Potyvirus. Host range: Cucurbitaceae.	DAS ELISA	
	Transmission by aphids, contact between plants, mechanical inoculation		
07104S/100	Zucchini Yellow Fleck Virus set / 100	100 tests	
07104S/300	Zucchini Yellow Fleck Virus set / 300	300 tests	
07104S/500	Zucchini Yellow Fleck Virus set / 500	500 tests	
07104C/096	Zucchini Yellow Fleck Virus complete kit / 96	96 tests	
07104C/480	Zucchini Yellow Fleck Virus complete kit / 480	480 tests	
07104PC	Positive Control Zucchini Yellow Fleck Virus	1 vial (10 tests)	
07104NC	Negative Control Zucchini Yellow Fleck Virus	1 vial (10 tests)	
<b>07090</b>	<b>Zucchini Yellow Mosaic Virus. ZYMV</b>	<b>Size</b>	
	Potyvirus. Host range: Cucurbitaceae.	DAS ELISA	
	Transmission by aphids and mechanical inoculation		
07090S/100	Zucchini Yellow Mosaic Virus set / 100	100 tests	
07090S/300	Zucchini Yellow Mosaic Virus set / 300	300 tests	
07090S/500	Zucchini Yellow Mosaic Virus set / 500	500 tests	
07090S/1000	Zucchini Yellow Mosaic Virus set / 1000	1000 tests	
07090S/5000	Zucchini Yellow Mosaic Virus set / 5000	5000 tests	
07090C/096	Zucchini Yellow Mosaic Virus complete kit / 96	96 tests	
07090C/480	Zucchini Yellow Mosaic Virus complete kit / 480	480 tests	
07090C/960	Zucchini Yellow Mosaic Virus complete kit / 960	960 tests	
07090PC	Positive Control Zucchini Yellow Mosaic Virus	1 vial (10 tests)	
07090NC	Negative Control Zucchini Yellow Mosaic Virus	1 vial (10 tests)	
	<b>ELISA Products - Bacteria</b>		
<b>07154</b>	<b>Acidovorax avenae ssp. citrulli</b>	<b>Size</b>	
	Bacterial fruit blotch. Host range: cucurbits	DAS ELISA	
07154S/100	A. avenae ssp. citrulli set / 100	100 tests	
07154S/300	A. avenae ssp. citrulli set / 300	300 tests	
07154S/500	A. avenae ssp. citrulli set / 500	500 tests	
07154S/1000	A. avenae ssp. citrulli set / 1000	1000 tests	
07154C/096	A. avenae ssp. citrulli complete kit / 96	96 tests	
07154C/480	A. avenae ssp. citrulli complete kit / 480	480 tests	
07154C/960	A. avenae ssp. citrulli complete kit / 960	960 tests	
07154PC	Positive Control A. avenae ssp. citrulli inactivated	1 vial (10 tests)	
07154NC	Negative Control A. avenae ssp. citrulli	1 vial (10 tests)	







<b>07070</b>	<b>Pseudomonas savastanoi pv. phaseolicola</b>	<b>Size</b>	
	Halo blight of beans. Host range: beans.	DAS ELISA	
07070S/100	Pseudomonas savastanoi pv. phaseolicola set / 100	100 tests	
07070S/300	Pseudomonas savastanoi pv. phaseolicola set / 300	300 tests	
07070S/500	Pseudomonas savastanoi pv. phaseolicola set / 500	500 tests	
07070S/1000	Pseudomonas savastanoi pv. phaseolicola set / 1000	1000 tests	
07070C/096	Pseudomonas savastanoi pv. phaseolicola complete kit / 96	96 tests	
07070C/480	Pseudomonas savastanoi pv. phaseolicola complete kit / 480	480 tests	
07070C/960	Pseudomonas savastanoi pv. phaseolicola complete kit / 960	960 tests	
07070PC	Positive Control Pseudomonas savastanoi pv. phaseolicola inactivated	1 vial (10 tests)	
07070NC	Negative Control Pseudomonas savastanoi pv. phaseolicola	1 vial (10 tests)	
<b>07147</b>	<b>Pseudomonas syringae pv. lachrymans</b>	<b>Size</b>	
	Angular leaf disease, Eckige Blattfleckenkrankheit. Host range: cucurbits.	DAS ELISA	
07147S/100	Pseudomonas syringae pv. lachrymans set / 100	100 tests	
07147S/300	Pseudomonas syringae pv. lachrymans set / 300	300 tests	
07147S/500	Pseudomonas syringae pv. lachrymans set / 500	500 tests	
07147S/1000	Pseudomonas syringae pv. lachrymans set / 1000	1000 tests	
07147C/096	Pseudomonas syringae pv. lachrymans complete kit / 96	96 tests	
07147C/480	Pseudomonas syringae pv. lachrymans complete kit / 480	480 tests	
07147C/960	Pseudomonas syringae pv. lachrymans complete kit / 960	960 tests	
07147PC	Positive Control Pseudomonas syringae pv. lachrymans inactivated	1 vial (10 tests)	
07147NC	Negative Control Pseudomonas syringae pv. lachrymans	1 vial (10 tests)	
<b>07071</b>	<b>Pseudomonas syringae pv. pisi</b>	<b>Size</b>	
	Bacterial blight of peas. Host range: peas.	DAS ELISA	
07071S/100	Pseudomonas syringae pv. pisi set / 100	100 tests	
07071S/300	Pseudomonas syringae pv. pisi set / 300	300 tests	
07071S/500	Pseudomonas syringae pv. pisi set / 500	500 tests	
07071S/1000	Pseudomonas syringae pv. pisi set / 1000	1000 tests	
07071C/096	Pseudomonas syringae pv. pisi complete kit / 96	96 tests	
07071C/480	Pseudomonas syringae pv. pisi complete kit / 480	480 tests	
07071C/960	Pseudomonas syringae pv. pisi complete kit / 960	960 tests	
07071PC	Positive Control Pseudomonas syringae pv. pisi inactivated	1 vial (10 tests)	
07071NC	Negative Control Pseudomonas syringae pv. pisi	1 vial (10 tests)	
<b>07139</b>	<b>Pseudomonas syringae pv. tomato</b>	<b>Size</b>	
	Bacterial speck disease of tomato. Host range: tomatoes.	DAS ELISA	
07139S/100	Pseudomonas syringae pv. tomato set / 100	100 tests	
07139S/300	Pseudomonas syringae pv. tomato set / 300	300 tests	
07139S/500	Pseudomonas syringae pv. tomato set / 500	500 tests	
07139S/1000	Pseudomonas syringae pv. tomato set / 1000	1000 tests	
07139C/096	Pseudomonas syringae pv. tomato complete kit / 96	96 tests	
07139C/480	Pseudomonas syringae pv. tomato complete kit / 480	480 tests	
07139C/960	Pseudomonas syringae pv. tomato complete kit / 960	960 tests	
07139PC	Positive Control Pseudomonas syringae pv. tomato inactivated	1 vial (10 tests)	
07139NC	Negative Control Pseudomonas syringae pv. tomato	1 vial (10 tests)	







<b>07077</b>	<b>Xanthomonas hortorum pv. pelargonii</b>	<b>Size</b>	
	Xanthomonas campestris pv. pelargonii. Bacterial Blight of Pelargonium.	DAS ELISA	
07077S/100	Xanthomonas hortorum pv. pelargonii set / 100	100 tests	
07077S/300	Xanthomonas hortorum pv. pelargonii set / 300	300 tests	
07077S/500	Xanthomonas hortorum pv. pelargonii set / 500	500 tests	
07077S/1000	Xanthomonas hortorum pv. pelargonii set / 1000	1000 tests	
07077C/096	Xanthomonas hortorum pv. pelargonii complete kit / 96	96 tests	
07077C/480	Xanthomonas hortorum pv. pelargonii complete kit / 480	480 tests	
07077C/960	Xanthomonas hortorum pv. pelargonii complete kit / 960	960 tests	
07077PC	Positive Control Xanthomonas hortorum pv. pelargonii inactivated	1 vial (10 tests)	
07077NC	Negative Control Xanthomonas hortorum pv. pelargonii	1 vial (10 tests)	
<b>07130</b>	<b>Xanthomonas oryzae pv. oryzae</b>	<b>Size</b>	
	Xanthomonas campestris pv. oryzae. Bacterial Leaf Blight of rice.	DAS ELISA	
07130S/100	Xanthomonas oryzae pv. oryzae set / 100	100 tests	
07130S/300	Xanthomonas oryzae pv. oryzae set / 300	300 tests	
07130S/500	Xanthomonas oryzae pv. oryzae set / 500	500 tests	
07130S/1000	Xanthomonas oryzae pv. oryzae set / 1000	1000 tests	
07130C/096	Xanthomonas oryzae pv. oryzae complete kit / 96	96 tests	
07130C/480	Xanthomonas oryzae pv. oryzae complete kit / 480	480 tests	
07130PC	Positive Control Xanthomonas oryzae pv. oryzae inactivated	1 vial (10 tests)	
07210	Positive Control Quarantine GAR unspecific	1 vial (10 tests)	
07130NC	Negative Control Xanthomonas oryzae pv. oryzae	1 vial (10 tests)	
<b>07119</b>	<b>Xylella fastidiosa grapevine isolate</b>	<b>Size</b>	
	Pierce's disease. Host range: many important trees and shrubs.	DAS ELISA	
07119S/100	Xylella fastidiosa grapevine isolate set / 100	100 tests	
07119S/300	Xylella fastidiosa grapevine isolate set / 300	300 tests	
07119S/500	Xylella fastidiosa grapevine isolate set / 500	500 tests	
07119S/1000	Xylella fastidiosa grapevine isolate set / 1000	1000 tests	
07119C/096	Xylella fastidiosa grapevine isolate complete kit / 96	96 tests	
07119C/480	Xylella fastidiosa grapevine isolate complete kit / 480	480 tests	
07119C/960	Xylella fastidiosa grapevine isolate complete kit / 960	960 tests	
07119PC	Positive Control Xylella fastidiosa grapevine isolate inactivated	1 vial (10 tests)	
07119NC	Negative Control Xylella fastidiosa grapevine isolate	1 vial (10 tests)	
<b>07138</b>	<b>Xylophilus ampelinus</b>	<b>Size</b>	
	Xanthomonas ampelina. Bacterial blight of grapevine.	DAS ELISA	
07138S/100	Xylophilus ampelinus set / 100	100 tests	
07138S/300	Xylophilus ampelinus set / 300	300 tests	
07138S/500	Xylophilus ampelinus set / 500	500 tests	
07138S/1000	Xylophilus ampelinus set / 1000	1000 tests	
07138C/096	Xylophilus ampelinus complete kit / 96	96 tests	
07138C/480	Xylophilus ampelinus complete kit / 480	480 tests	
07138C/960	Xylophilus ampelinus complete kit / 960	960 tests	
07138PC	Positive Control Xylophilus ampelinus inactivated	1 vial (10 tests)	
07138NC	Negative control Xylophilus ampelinus	1 vial (10 tests)	







<b>07381</b>	<b>Antiserum Dickeya (=Pectobacterium) chrysanthemi ex goat</b>	<b>Size</b>	
07381/01	Antiserum Dickeya chrysanthemi ca. 5 000 tests (20µl/well)	0.1 ml	
07381/02	Antiserum Dickeya chrysanthemi ca. 10 000 tests (20µl/well)	0.2 ml	
07381/10	Antiserum Dickeya. chrysanthemi ca. 100 000 tests (20µl/well)	1.0 ml	
07381PC	Positive IF Control Dickeya chrysanthemi inactivated	1 vial	
07310PC	Unspecific IF Control for C.m.m., C.m.s., Ralstonia, Dickeya chrys.	1 vial	
<b>07329</b>	<b>Antiserum Pantoea stewartii ssp. stewartii ex rabbit</b>	<b>Size</b>	
07329/01	Antiserum Pantoea st. ssp. stewartii ca. 5 000 tests (20µl/well)	0.1 ml	
07329/02	Antiserum Pantoea st. ssp. stewartii ca. 10 000 tests (20µl/well)	0.2 ml	
07329/10	Antiserum Pantoea st. ssp. stewartii ca. 50 000 tests (20µl/well)	1.0 ml	
07329PC	Positive IF Control Pantoea st. ssp. stewartii inactivated	1 vial	
<b>07381</b>	<b>Antiserum P. chrysanthemi see Dickeya chrysanthemi</b>		
<b>07339</b>	<b>Antiserum Pseudomonas syringae pv. tomato ex rabbit</b>	<b>Size</b>	
07339/01	Antiserum Pseudomonas s. pv. tomato ca. 1 000 tests (20µl/well)	0.1 ml	
07339/02	Antiserum Pseudomonas s. pv. tomato ca. 2 000 tests (20µl/well)	0.2 ml	
07339/10	Antiserum Pseudomonas s. pv. tomato ca. 10 000 tests (20µl/well)	1.0 ml	
07339PC	Positive Control Pseudomonas s. pv. tomato inactivated	1 vial	
<b>07355</b>	<b>Antiserum Plasmopora viticola ex rabbit</b>	<b>Size</b>	
	Identification of oospores only. Cross reaction with other oomycetes		
07355/02	Antiserum Plasmopora viticola ca.10 000 tests (20µl/well)	0.2 ml	
07355/10	Antiserum Plasmopora viticola ca. 50 000 tests (20µl/well)	1.0 ml	
<b>07356</b>	<b>Antiserum Ralstonia solanacearum ex goat</b>	<b>Size</b>	
07356/01	Antiserum Ralstonia solanacearum 50 000 tests (20µl/well)	0.1 ml	
07356/02	Antiserum Ralstonia solanacearum 100 000 tests (20µl/well)	0.2 ml	
07356PC	Positive IF Control Ralstonia solanacearum	1 vial	
07310PC	Unspecific IF Control for C.m.m., C.m.s., Ralstonia, Dickeya chrys.	1 vial	
<b>07373</b>	<b>Antiserum Xanthomonas arboricola pv. corylina ex rabbit</b>	<b>Size</b>	
07373/01	Antiserum Xanthomonas a. pv. corylina ca. 3 000 tests (20µl/well)	0.1 ml	
07373/02	Antiserum Xanthomonas a. pv. corylina ca. 6 000 tests (20µl/well)	0.2 ml	
07373/10	Antiserum Xanthomonas a. pv. corylina ca. 30 000 tests (20µl/well)	1.0 ml	
07373PC	Positive IF control X. arboricola pv. corylina inactivated	1 vial	
<b>07325</b>	<b>Antiserum Xanthomonas axonopodis pv. begoniae ex rabbit</b>	<b>Size</b>	
07325/01	Antiserum Xanthomonas a. pv. begoniae ca. 5 000 tests (20µl/well)	0.1 ml	
07325/02	Antiserum Xanthomonas a. pv. begoniae ca. 10 000 tests (20µl/well)	0.2 ml	
07325/10	Antiserum Xanthomonas a. pv. begoniae ca. 50 000 tests (20µl/well)	1.0 ml	
07325PC	Positive IF Control Xanthomonas axonopodis pv. begoniae inactivated	1 vial	





	<b>Immunofluorescence - Disposables</b>	<b>Size</b>	
07400/100	Multiwell Slides IFT 10x6 blue	2x50 slides	
07401/1000	Cover Slides 24x16 mm	1000 slides	
	<b>PCR Products - Phytoplasma</b>		
	<b>New: Complete PCR reaction kits which contain all reagents necessary for the PCR reaction. See page 3 for composition of sets and complete PCR reaction kits.</b>		
<b>08000</b>	<b>Apple Proliferation Group Phytoplasma PCR</b>	<b>Size</b>	
	detects the members of the Apple Proliferation group (Apple Proliferation, European Stone Fruit Yellows and Pear Decline Phytoplasma).		
08000S/100	Apple Proliferation Group Phytoplasma PCR set	100 tests	
08000C/100	Apple Proliferation Group Phytoplasma complete PCR reaction kit	100 tests	
08000PC	Positive PCR Control Apple Proliferation Group Phytoplasma	1 vial (10 reactions)	
08000 NC	Negative PCR Control Apple Proliferation Group Phytoplasma	1 vial (10 reactions)	
<b>08002</b>	<b>Aster Yellows Phytoplasma PCR</b>	<b>Size</b>	
08002S/100	Aster Yellows Phytoplasma PCR set	100 tests	
08002C/100	Aster Yellows Phytoplasma complete PCR reaction kit	100 tests	
08002PC	Positive PCR Control Aster Yellows Phytoplasma	1 vial (10 reactions)	
08002NC	Negative PCR Control Aster Yellows Phytoplasma	1 vial (10 reactions)	
<b>08003</b>	<b>Elm Yellows Phytoplasma PCR</b>	<b>Size</b>	
08003S/100	Elm Yellows Phytoplasma PCR set	100 tests	
08003C/100	Elm Yellows Phytoplasma complete PCR reaction kit	100 tests	
08003PC	Positive PCR Control Elm Yellows Phytoplasma	1 vial (10 reactions)	
08003NC	Negative PCR Control Elm Yellows Phytoplasma	1 vial (10 reactions)	
<b>08004</b>	<b>Stolbur Phytoplasma PCR</b>	<b>Size</b>	
	detects the members of the Stolbur Phytoplasma group.		
08004S/100	Stolbur Phytoplasma PCR set	100 tests	
08004C/100	Stolbur Phytoplasma complete PCR reaction kit	100 tests	
08004PC	Positive PCR Control Stolbur Phytoplasma	1 vial (10 reactions)	
08004NC	Negative PCR Control Stolbur Phytoplasma	1 vial (10 reactions)	
<b>08009</b>	<b>Universal Phytoplasma nested PCR</b>	<b>Size</b>	
08009S/100	Universal Phytoplasma nested PCR Set	100 tests	
08009C/100	Universal Phytoplasma nested complete PCR reaction kit	100 tests	
08009PC	Positive PCR Control Universal Phytoplasma	1 vial (10 reactions)	
08009NC	Negative PCR Control Universal Phytoplasma	1 vial (10 reactions)	

<b>PCR Products - Bacteria</b>			
<b>08064</b>	<b>Clavibacter michiganensis ssp. sepedonicus PCR</b>	<b>Size</b>	
08064S/100	Clavibacter michiganensis ssp. sepedonicus PCR set	100 tests	
08064C/100	Clavibacter michiganensis ssp. sepedonicus complete PCR reaction kit	100 tests	
08064PC	Positive PCR Control Clavibacter m. ssp. sepedonicus	1 vial (10 reactions)	
08064NC	Negative PCR Control Clavibacter m. ssp. sepedonicus	1 vial (10 reactions)	
<b>08010</b>	<b>Erwinia amylovora PCR</b>	<b>Size</b>	
08010S/100	Erwinia amylovora PCR set	100 tests	
08010C/100	Erwinia amylovora complete PCR reaction kit	100 tests	
08010PC	Positive PCR Control E. amylovora	1 vial (10 reactions)	
08010NC	Negative PCR Control E. amylovora	1 vial (10 reactions)	
<b>08005</b>	<b>Erwinia amylovora nested PCR</b>	<b>Size</b>	
08005S/100	Erwinia amylovora nested PCR set	100 tests	
08005C/100	Erwinia amylovora nested complete PCR reaction kit	100 tests	
08005PC	Positive PCR Control Erwinia amylovora	1 vial (10 reactions)	
08005NC	Negative PCR Control Erwinia amylovora	1 vial (10 reactions)	
<b>08056</b>	<b>Ralstonia solanacearum PCR</b>	<b>Size</b>	
08056S/100	Ralstonia solanacearum PCR set	100 tests	
08056C/100	Ralstonia solanacearum complete PCR reaction kit	100 tests	
08056PC	Positive PCR Control Ralstonia solanacearum	1 vial (10 reactions)	
08056NC	Negative PCR Control Ralstonia solanacearum	1 vial (10 reactions)	
<b>08162</b>	<b>Xanthomonas arboricola pv. pruni</b>	<b>Size</b>	
08162S/100	X. arboricola pv. pruni PCR set	100 tests	
08162C/100	X. arboricola pv. pruni complete PCR reaction kit	100 tests	
08162PC	Positive PCR Control X. arboricola pv. pruni	1 vial (10 reactions)	
08162NC	Negative PCR Control X. arboricola pv. pruni	1 vial (10 reactions)	
<b>08119</b>	<b>Xylella fastidiosa PCR</b>	<b>Size</b>	
08119S/100	Xylella fastidiosa PCR set	100 tests	
08119C/100	Xylella fastidiosa complete PCR reaction kit	100 tests	
08119PC	Positive PCR Control Xylella fastidiosa	1 vial (10 reactions)	
08119NC	Negative PCR Control Xylella fastidiosa	1 vial (10 reactions)	
<b>PCR Products - Fungi</b>			
<b>08006</b>	<b>Phytophthora fragariae PCR</b>	<b>Size</b>	
08006S/100	Phytophthora fragariae PCR set	100 tests	
08006C/100	Phytophthora fragariae complete PCR reaction kit	100 tests	
08006PC	Positive PCR Control Phytophthora fragariae	1 vial (10 reactions)	
08006NC	Negative PCR Control Phytophthora fragariae	1 vial (10 reactions)	

<b>08007</b>	<b>Fusarium culmorum PCR</b>	<b>Size</b>	
08007S/100	Fusarium culmorum PCR set	100 tests	
08007C/100	Fusarium culmorum complete PCR reaction kit	100 tests	
08007PC	Positive PCR Control F. culmorum	1 vial (10 reactions)	
08007NC	Negative PCR Control F. culmorum	1 vial (10 reactions)	
<b>08008</b>	<b>Fusarium graminearum PCR</b>	<b>Size</b>	
08008S/100	Fusarium graminearum PCR set	100 tests	
08008C/100	Fusarium graminearum complete PCR reaction kit	100 tests	
08008PC	Positive PCR Control Fusarium graminearum	1 vial (10 reactions)	
08008NC	Negative PCR Control Fusarium graminearum	1 vial (10 reactions)	
	<b>ELISA Chemicals</b>		
<b>Cat. No.</b>	<b>Description</b>	<b>Size</b>	
00103/025	Albumin for ELISA	25 g	
00103/100	Albumin for ELISA	100 g	
00104/001	Blocking Milk powder	1 kg	
07600/001	Coating Buffer powder	1 liter	
07601/001	Conjugate/Sample Buffer Standard powder	1 liter	
07615/001	Conjugate/Sample Buffer LOEWE II powder	1 liter	
07613/001	Extraction Buffer LOEWE I powder for sample extraction of CaMV	1 liter	
00130/005	4-Nitrophenylphosphate Na <sub>2</sub> -salt	5 g	
00130/025	4-Nitrophenylphosphate Na <sub>2</sub> -salt	25 g	
00134/001	Polyvinylpyrrolidone K25	1 kg	
07603/005	Wash Buffer Powder	5 liter	
07614/005	Substrate Tablets 20 mg	5 tablets	
07614/010	Substrate Tablets 20 mg	10 tablets	
07617/005	Substrate Tablets 5 mg	5 tablets	
07617/010	Substrate Tablets 5 mg	10 tablets	
07602/025	Substrate Buffer 5X liquid	25 ml	
07602/100	Substrate Buffer 5X liquid	100 ml	
00131/100	Tween 20 @ ELISA grade	100 ml	





## ALLGEMEINE VERKAUFS – UND LIEFERBEDINGUNGEN (Inland)

### **Allgemeines**

Unsere Verkaufs- und Lieferbedingungen sind Bestandteil aller Angebote und aller mit unseren Kunden geschlossenen Verträge. Einkaufsbedingungen des Kunden verpflichten uns auch dann nicht, wenn wir nicht ausdrücklich widersprechen. Mit der Auftragserteilung erkennt der Kunde unsere Bedingungen stillschweigend an, ohne dass es einer besonderen Vereinbarung bedarf.

### **Angebote, Aufträge**

Unsere Angebote sind bezüglich Preis, Liefermenge und -frist freibleibend. Dies gilt auch für unsere Kataloge und Preislisten. Schriftlich oder mündlich erteilte Aufträge gelten nur dann als von uns akzeptiert, wenn sie schriftlich bestätigt werden. Die Rechnungserteilung gilt als Auftragsbestätigung.

### **Preise**

Unsere Preise verstehen sich zuzüglich der gesetzlichen Mehrwertsteuer in der jeweils gültigen Höhe. Bestätigte Preise sind freibleibend. Wenn nicht bei Vertragsabschluss anders durch uns schriftlich bestätigt, sind für die Berechnung die am Tage der Lieferung gültigen Preise maßgebend.

### **Versand**

Bei Aufträgen über 150.00 Euro netto liefern wir frei Postamt oder Bahnstation ohne Verpackungszuschlag. Bei Aufträgen unter 150.00 Euro netto berechnen wir Verpackungs- sowie Versandkosten. Zustellgebühren für Paketsendungen sowie Rollgelder gehen in jedem Fall zu Lasten des Bestellers. Wir behalten uns die Wahl der jeweils günstigsten Versandart vor. Der Versand erfolgt unversichert auf Gefahr des Käufers; eine Transportversicherung wird nur auf ausdrückliche Anweisung und auf Kosten des Käufers abgeschlossen.

### **Zahlungsbedingungen**

Unsere Rechnungen gelten als anerkannt, falls nicht innerhalb von 30 Tagen schriftlich widersprochen wird. Die Zahlungsfrist läuft ab Rechnungsdatum und beträgt 30 Tage. Bei Zahlungsverzug des Käufers wird auch ein nichtfälliger Teil der Schuld fällig und sofort einforderbar. Der Verkäufer kann ausstehende Lieferungen verweigern, bis der Käufer seiner Zahlungspflicht nachgekommen ist.

### **Eigentumsvorbehalt**

Die gelieferte Ware bleibt bis zur völligen Bezahlung des Kaufpreises unser Eigentum. Der Käufer ist bis dahin nicht berechtigt, die Ware an Dritte zu verpfänden, oder als Sicherheit zu übereignen. Der Käufer ist widerruflich zur Weiterveräußerung dieser Vorbehaltsware im Rahmen eines geordneten Geschäftsbetriebs berechtigt. Die aus einer Weiterveräußerung an Dritte entstehenden Forderungen tritt er in Höhe unserer Forderungen an uns ab. Zugriffe Dritter auf die Vorbehaltsware oder abgetretene Forderungen müssen uns unverzüglich angezeigt werden. Der Käufer trägt für die Dauer des Eigentumsvorbehalts die Verantwortung für ausreichende Versicherung und für die Einhaltung der Lagerungsvorschriften.

### **Haftung**

Unsere Produkte sind nur für den Labor- und Fabrikationsbereich bestimmt. Sie dürfen weder in der Humanmedizin noch im Haushalt noch als Lebens- und Genussmittel verwendet werden. Wir haften nicht für Personen-, Sach- und Vermögensschäden, die durch unsachgemäße und bestimmungswidrige Handhabung unserer Produkte entstanden sind. Wir lehnen auch jeden Haftungsrückgriff für Schäden ab, welche unseren Kunden durch Nichtbeachtung gesetzlicher Schutzbestimmungen entstanden sind. Soweit wir nicht Hersteller der von uns vertriebenen Produkte sind, beschränkt sich unsere Produkthaftung auf unsere Tätigkeit als Lieferant. Insbesondere übernehmen Besteller von Positivkontrollen die Verantwortung für das Hantieren, Lagern und für den möglichen Missbrauch dieser Produkte. Es liegt in der Verantwortung des Käufers, festzustellen, ob er entsprechend der gültigen gesetzlichen Bestimmungen diese Produkte beziehen und mit Ihnen umgehen darf.

### **Beanstandungen / Rücksendungen**

Mängelrügen müssen innerhalb von 7 Tagen nach Empfang der Ware schriftlich geltend gemacht werden. Mängelrügen entbinden den Käufer nicht von seiner Zahlungspflicht. Die beanstandete Ware darf nur mit unserem vorherigen ausdrücklichen Einverständnis zurückgesandt werden. Bei berechtigten Beanstandungen behalten wir uns die Wahl zwischen Ersatzlieferung und Gutschrift vor.

### **Erfüllungsort / Gerichtsstand**

Erfüllungsort für Lieferung und Zahlung ist Sauerlach. Gerichtsstand ist München.

## **GENERAL TERMS AND CONDITIONS FOR NON-DOMESTIC SALE**

### **Prices and Terms of Payment**

Our prices are in EURO ex-works Sauerlach. Prices are quoted without engagement on our part. Please contact our office in Sauerlach for direct orders or information about the possibility to order through our local supplier. We do not accept payment by credit card. Payment is in advance unless agreed otherwise. All bank charges and costs for money transfer to our account in Germany are on the purchaser's full expense. Shipping and handling charges will be applied to the invoice. Please contact us for details on bank transfer.

### **Shipping**

Transport is at the purchaser's full risk. Purchasers outside Germany bear all freight costs. Products are shipped at ambient temperature via TNT, DHL, FEDEX, UPS or others. Please provide clear shipping instructions when ordering.

### **Warranties and Liabilities**

LOEWE® Biochemica GmbH warrants that its products perform as described in our product specification sheets. Should any product fail for reasons other than misuse, at LOEWE® Biochemica GmbH's option, it will be replaced free of charge, or the purchase price will be refunded. Returns must be authorized by us. This warranty is exclusive, and LOEWE® Biochemica GmbH makes no other warranty expressed or implied. LOEWE® Biochemica GmbH shall not be liable for any accidental, consequential, or contingent damages. Please contact our technical service in case you have any question, or if a product fails to work as expected.

### **Discounts**

For information on bulk or volume discounts, please contact us.

### **Proper Handling**

All chemicals are produced for laboratory use for professionals only. We cannot accept liability caused by improper handling within the laboratory or in the household or when used on humans or animals. Our products are in particular not admitted for Human application. Customers ordering and receiving ELISA-Kits and/or positive controls for testing plant pathogens assume all responsibility for handling, storing, and possible abuse of those products. LOEWE® Biochemica GmbH is not responsible for damages and/or injuries arising from their supply. It is also in the responsibility of the customer to verify whether he/she is allowed to receive and handle this material.

### **Jurisdiction**

German law and German Jurisdiction are applicable to all legal and contractual disputes. Exclusive place of jurisdiction is Munich.

### **Address**

LOEWE® Biochemica GmbH  
Mühlweg 2a  
D-82054 Sauerlach

Tel: 08104 616 20  
Telefax 08104 616 48  
[sales@loewe-info.com](mailto:sales@loewe-info.com)  
[service@loewe-info.com](mailto:service@loewe-info.com)

NOTES:

---