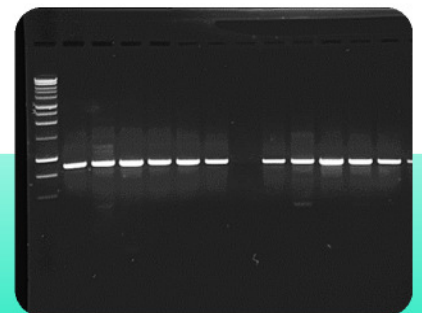
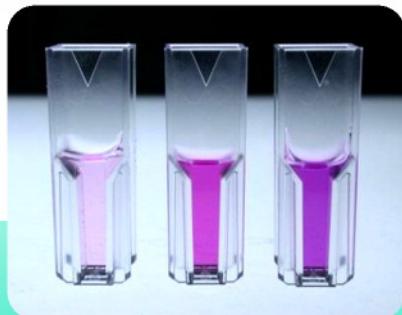


# LOEWE® 2012



## Plant Diagnostics



© Loewe® Biochemica GmbH 2011

# LOEWE®<sup>®</sup> Product Information

## LOEWE®FAST Lateral Flow Tests

Reliable and specific detection of plant pathogens within minutes. As stand-alone diagnostic tool these tests provide quick and easy assessment of suspicious plant material in the field or greenhouse without the need of a laboratory. LOEWE®FAST kits include 4 single-use test cassettes, 4 pre-filled tubes with sample buffer, and 4 single-use pipettes for sample application.



## ELISA Products

**ELISA sets** are supplied as 100, 500 and for some articles as 1000 test units. **We would like to emphasize, that our ELISA sets are optimized for a test volume of 200 µl per well, which is twice the volume supplied by others.** Therewith highest accuracy, repeatability and sensitivity are ensured.

Volumes provided:

100 tests	500 tests	1000 tests
120 µl	520 µl	1020 µl



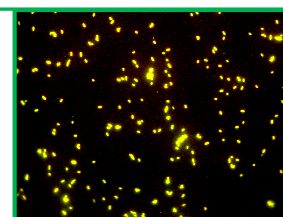
**ELISA complete kits** contain following components:

Components	96 test format	480 test format	960 test format
Antibody	0.1 ml	0.5 ml	1.0 ml
Antibody-AP-conjugate	0.1 ml	0.5 ml	1.0 ml
Positive Control	10 tests	10 tests	20 tests
Negative Control	10 tests	10 tests	20 tests
Coating Buffer	1 liter	1 liter	1 liter
Wash Buffer	1 x 5 liter	1 x 5 liter	2 x 5 liter
Conjugate/Sample Buffer	1 x 1 liter	2 x 1 liter	4 x 1 liter
Substrate Buffer (5x)	1 x 25 ml	1 x 25 ml	2 x 25 ml
Tween 20	10 ml	10 ml	10 ml
Substrate Tablets	4 tablets à 5 mg	5 tablets à 20 mg	10 tablets à 20 mg
High-binding ELISA plates	12 Modules à 8 wells	5 plates	10 plates
Sealing Cover	1	5	10



## Immuno Fluorescence Products

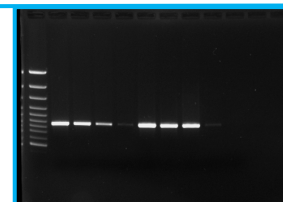
We are offering a wide range of polyclonal antisera from goat and rabbit, secondary fluorescence labelled antibodies, as well as multiwell slides and cover slides for immuno fluorescence studies.



## PCR Sets and Kits

All components are pre-tested and each product is accompanied by a lot-specific certificate and a working protocol.

PCR Set	100 reactions	PCR complete reaction kit	100 reactions
Premix (primer/dNTPs)	0.1 ml	Premix (primer/dNTPs)	0.1 ml
Positive Control	10 tests	DNA-Polymerase	100 reactions
Negative Control	10 tests	Reaction Buffer mix	100 reactions
		PCR grade water	4 ml
		Positive Control	10 tests
		Negative Control	10 tests



## Blue Substrates

Explore our range of soluble, dyed, polymeric substrates for Proteases, Glucanases, Chitinases, Lysozyme, and Xylanases for plate-clearing assays, semi quantitative enzyme assays, microplate assays and more.



## CONTENTS

<b>Lateral Flow Kits LOEWE®FAST</b>	<b>Page 4 - 6</b>
<b>ELISA Products</b>	<b>Page 6 - 44</b>
ELISA Products - Viruses	Page 7 - 38
ELISA Products - Bacteria	Page 38 - 43
ELISA Products - Fungi	Page 43 - 44
ELISA Products - Nematodes	Page 44
<b>Immuno Fluorescence Products</b>	<b>Page 44 - 46</b>
Immunofluorescence - Antisera	Page 44 - 46
Immunofluorescence - Secondary Antibodies	Page 46
Immunofluorescence - Disposables	Page 46
<b>PCR Products</b>	<b>Page 47 - 48</b>
PCR Products - Phytoplasma	Page 47
PCR Products - Bacteria	Page 47 - 48
PCR Products - Fungi	Page 48
<b>ELISA Chemicals and Consumables</b>	<b>Page 49</b>
<b>Tissue Blot Chemicals</b>	<b>Page 50</b>
<b>Blue Substrates</b>	<b>Page 50</b>
<b>AGB - General Terms for Non-domestic Sales</b>	<b>Appendix</b>

<b>Lateral Flow Tests LOEWE®FAST</b>		
<b>For rapid diagnosis of plant pathogens in the field</b>		
	<b>One kit contains 4 cassettes, 4 single-use pipettes and 4 ready-to-use buffers.</b>	
	<b>For Positive Controls see ELISA section</b>	
<b>LF07054</b>	<b>LOEWE®FAST Kit Apple Mosaic Virus hop isolate</b>	<b>Size</b>
	<b>For rapid detection of ApMV in suspected plant material</b>	
LF07054/04	LOEWE®FAST Kit Apple Mosaic Virus hop isolate	4 tests
LF07054/16	LOEWE®FAST Kit Apple Mosaic Virus hop isolate	16 tests
LF07054/40	LOEWE®FAST Kit Apple Mosaic Virus hop isolate	40 tests
<b>LF07158</b>	<b>LOEWE®FAST Kit Botrytis cinerea grapevine isolate</b>	<b>Size</b>
	<b>For rapid detection of B. cinerea</b>	
LF07158/04	LOEWE®FAST Kit Botrytis cinerea grapevine isolate	4 tests
LF07158/16	LOEWE®FAST Kit Botrytis cinerea grapevine isolate	16 tests
LF07158/40	LOEWE®FAST Kit Botrytis cinerea grapevine isolate	40 tests
<b>LF07063</b>	<b>LOEWE®FAST Kit Clavibacter m. ssp. michiganensis</b>	<b>Size</b>
	<b>For rapid detection of C.m. ssp. michiganensis in suspected cultures</b>	
LF07063/04	LOEWE®FAST Kit Clavibacter m. ssp. michiganensis	4 tests
LF07063/16	LOEWE®FAST Kit Clavibacter m. ssp. michiganensis	16 tests
LF07063/40	LOEWE®FAST Kit Clavibacter m. ssp. michiganensis	40 tests
<b>LF07064</b>	<b>LOEWE®FAST Kit Clavibacter m. ssp. sepedonicus</b>	<b>Size</b>
	<b>For rapid detection of C.m. ssp. sepedonicus in suspected cultures</b>	
LF07064/04	LOEWE®FAST Kit Clavibacter m. ssp. sepedonicus	4 tests
LF07064/16	LOEWE®FAST Kit Clavibacter m. ssp. sepedonicus	16 tests
LF07064/40	LOEWE®FAST Kit Clavibacter m. ssp. sepedonicus	40 tests
<b>LF07022</b>	<b>LOEWE®FAST Kit Cucumber Green Mottle Mosaic Virus</b>	<b>Size</b>
	<b>For rapid detection of CGMMV in suspected leaves</b>	
LF07022 /04	LOEWE®FAST Kit Cucumber Green Mottle Mosaic Virus	4 tests
LF07022/16	LOEWE®FAST Kit Cucumber Green Mottle Mosaic Virus	16 tests
LF07022/40	LOEWE®FAST Kit Cucumber Green Mottle Mosaic Virus	40 tests
<b>LF07186</b>	<b>LOEWE®FAST Kit Cucumber Mosaic Virus</b>	<b>Size</b>
	<b>For rapid detection of CMV in suspected leaves</b>	
LF07186/04	LOEWE®FAST Kit Cucumber Mosaic Virus	4 tests
LF07186/16	LOEWE®FAST Kit Cucumber Mosaic Virus	16 tests
LF07186/40	LOEWE®FAST Kit Cucumber Mosaic Virus	40 tests

<b>LF07505</b>	<b>LOEWE®FAST Kit Impatiens Necrotic Spot Virus</b>	<b>Size</b>
	<b>For rapid detection of INSV in suspected leaves</b>	
LF07505/04	LOEWE®FAST Kit Impatiens Necrotic Spot Virus	4 tests
LF07505/16	LOEWE®FAST Kit Impatiens Necrotic Spot Virus	16 tests
LF07505/40	LOEWE®FAST Kit Impatiens Necrotic Spot Virus	40 tests
<b>LF07128</b>	<b>LOEWE®FAST Kit Pepino Mosaic Virus</b>	<b>Size</b>
	<b>For rapid detection of PepMV in suspected leaves</b>	
LF07128/04	LOEWE®FAST Kit Pepino Mosaic Virus	4 tests
LF07128/16	LOEWE®FAST Kit Pepino Mosaic Virus	16 tests
LF07128/40	LOEWE®FAST Kit Pepino Mosaic Virus	40 tests
<b>LF07051</b>	<b>LOEWE®FAST Kit Prune Dwarf Virus</b>	<b>Size</b>
	<b>For rapid detection of PDV in suspected plant material</b>	
LF07051/04	LOEWE®FAST Kit Prune Dwarf Virus	4 tests
LF07051/16	LOEWE®FAST Kit Prune Dwarf Virus	16 tests
LF07051/40	LOEWE®FAST Kit Prune Dwarf Virus	40 tests
<b>LF07052</b>	<b>LOEWE®FAST Kit Prunus Necrotic Ringspot Virus</b>	<b>Size</b>
	<b>For rapid detection of PNRV in suspected plant material</b>	
LF07052/04	LOEWE®FAST Kit Prunus Necrotic Ringspot Virus	4 tests
LF07052/16	LOEWE®FAST Kit Prunus Necrotic Ringspot Virus	16 tests
LF07052/40	LOEWE®FAST Kit Prunus Necrotic Ringspot Virus	40 tests
<b>LF07056</b>	<b>LOEWE®FAST Kit Ralstonia solanacearum</b>	<b>Size</b>
	<b>For rapid detection of R. solanacearum in suspected cultures</b>	
LF07056/04	LOEWE®FAST Kit Ralstonia solanacearum	4 tests
LF07056/16	LOEWE®FAST Kit Ralstonia solanacearum	16 tests
LF07056/40	LOEWE®FAST Kit Ralstonia solanacearum	40 tests
<b>LF07042</b>	<b>LOEWE®FAST Kit Tobacco Mosaic Virus</b>	<b>Size</b>
	<b>For rapid detection of TMV in symptom bearing leaves</b>	
LF07042 /04	LOEWE®FAST Kit Tobacco Mosaic Virus	4 tests
LF07042/16	LOEWE®FAST Kit Tobacco Mosaic Virus	16 tests
LF07042/40	LOEWE®FAST Kit Tobacco Mosaic Virus	40 tests
<b>LF07509</b>	<b>LOEWE®FAST Kit TSWV, TCSV, GRSV</b>	<b>Size</b>
	<b>For rapid detection of TSWV, TCSV and GRSV</b>	
	<b>in symptom bearing plant material</b>	
LF07509 /04	LOEWE®FAST Kit TSWV, TCSV, GRSV	4 tests
LF07509/16	LOEWE®FAST Kit TSWV, TCSV, GRSV	16 tests
LF07509/40	LOEWE®FAST Kit TSWV, TCSV, GRSV	40 tests
<b>LF07047</b>	<b>LOEWE®FAST Kit Tomato Mosaic Virus</b>	<b>Size</b>
	<b>For rapid detection of ToMV in symptom bearing leaves</b>	
LF07047/04	LOEWE®FAST Kit Tomato Mosaic Virus	4 tests
LF07047/16	LOEWE®FAST Kit Tomato Mosaic Virus	16 tests
LF07047/40	LOEWE®FAST Kit Tomato Mosaic Virus	40 tests



<b>ELISA Products - Viruses</b>		
	<b>see page 2 for composition of sets and complete kits</b>	
<b>07001</b>	<b>Alfalfa Mosaic Virus. AMV (Lucerne Mosaic Virus, Potato Calico Virus)</b>	<b>Size</b>
	Alfamovirus. Host range: many species	DAS ELISA
	Transmission by aphids, mechanical inoculation, seed	
07001S/100	Alfalfa Mosaic Virus set	100 tests
07001S/500	Alfalfa Mosaic Virus set	500 tests
07001C/096	Alfalfa Mosaic Virus complete kit	96 tests
07001C/480	Alfalfa Mosaic Virus complete kit	480 tests
07001PC	Positive Control Alfalfa Mosaic Virus	1 vial (10 tests)
07001NC	Negative Control AMV	1 vial (10 tests)
<b>07164</b>	<b>Andean Potato Latent Virus. APLV (Potato Andean Latent Virus)</b>	<b>Size</b>
	Tymovirus. Host range: potato	DAS ELISA
	transmitted by contact, grafting, mechanical inoculation	
07164S/100	Andean Potato Latent Virus set	100 tests
07164S/500	Andean Potato Latent Virus set	500 tests
07164C/096	Andean Potato Latent Virus complete kit	96 tests
07164C/480	Andean Potato Latent Virus complete kit	480 tests
<b>07210PC</b>	<b>Positive Control Quarantine GAR unspecific</b>	1 vial (10 tests)
07164NC	Negative Control Andean Potato Latent Virus	1 vial (10 tests)
<b>07160</b>	<b>Andean Potato Mottle Virus. APMoV (Potato Andean Mottle Virus)</b>	<b>Size</b>
	Comovirus. Host range: potato	DAS ELISA
	naturally transmitted by a beetle (Coleoptera)	
07160S/100	Andean Potato Mottle Virus set	100 tests
07160S/500	Andean Potato Mottle Virus set	500 tests
07160C/096	Andean Potato Mottle Virus complete kit	96 tests
07160C/480	Andean Potato Mottle Virus complete kit	480 tests
<b>07210PC</b>	<b>Positive Control Quarantine GAR unspecific</b>	1 vial (10 tests)
07160NC	Negative Control Andean Potato Mottle Virus	1 vial (10 tests)
<b>07003</b>	<b>Apple Chlorotic Leafspot Virus. ACLSV</b>	<b>Size</b>
	Trichovirus. Host range: Rosaceae	Cocktail ELISA
	Transmitted by grafting, mechanical inoculation, nematodes?	
07003S/100	Apple Chlorotic Leafspot Virus set	100 tests
07003S/500	Apple Chlorotic Leafspot Virus set	500 tests
07003C/096	Apple Chlorotic Leafspot Virus complete kit	96 tests
07003C/480	Apple Chlorotic Leafspot Virus complete kit	480 tests
07003PC	Positive Control Apple Chlorotic Leafspot Virus	1 vial (10 tests)
07003NC	Negative Control Apple Chlorotic Leafspot Virus	1 vial (10 tests)

<b>07054</b>	<b>Apple Mosaic Virus. APMV (hop isolate)</b>	<b>Size</b>
	Ilarvirus. Host range: Rosaceae	DAS ELISA
	Transmission by grafting, mechanical inoculation, pollen?	
07054S/100	Apple Mosaic Virus set	100 tests
07054S/500	Apple Mosaic Virus set	500 tests
07054C/096	Apple Mosaic Virus complete kit	96 tests
07054C/480	Apple Mosaic Virus complete kit	480 tests
07054PC	Positive Control Apple Mosaic Virus	1 vial (10 tests)
07054NC	Negative Control Apple Mosaic Virus	1 vial (10 tests)
<b>07085</b>	<b>Apple Stem Grooving Virus. ASGV (Citrus Tatterleaf Virus)</b>	<b>Size</b>
	Capillovirus. Host range: apple, citrus	Cocktail ELISA
	Transmission by grafting, mechanical inoculation, seed	
07085S/100	ASGV set	100 tests
07085S/500	ASGV set	500 tests
07085C/096	ASGV complete kit	96 tests
07085C/480	ASGV complete kit	480 tests
07085PC	Positive Control ASGV	1 vial (10 tests)
07085NC	Negative Control ASGV	1 vial (10 tests)
<b>07053</b>	<b>Arabis Mosaic Virus. ArMV</b>	<b>Size</b>
	Nepovirus. Host range: many species	DAS ELISA
	Transmission by grafting, mechanical inoculation, nematodes, seed	
07053S/100	Arabis Mosaic Virus set	100 tests
07053S/500	Arabis Mosaic Virus set	500 tests
07053C/096	Arabis Mosaic Virus complete kit	96 tests
07053C/480	Arabis Mosaic Virus complete kit	480 tests
07053PC	Positive Control Arabis Mosaic Virus inactivated	1 vial (10 tests)
07053NC	Negative Control Arabis Mosaic Virus	1 vial (10 tests)
	<b>Banana Infectious Chlorosis Virus see Cucumber Mosaic Virus</b>	
<b>07006</b>	<b>Barley Mild Mosaic Virus. BaMMV</b>	<b>Size</b>
	Bymovirus. Host range: barley	DAS ELISA
	Transmission by Polymyxa graminis	
07006S/100	Barley Mild Mosaic Virus set	100 tests
07006S/500	Barley Mild Mosaic Virus set	500 tests
07006C/096	Barley Mild Mosaic Virus complete kit	96 tests
07006C/480	Barley Mild Mosaic Virus complete kit	480 tests
07006PC	Positive Control Barley Mild Mosaic Virus	1 vial (10 tests)
07006NC	Negative Control Barley Mild Mosaic Virus	1 vial (10 tests)









<b>07078</b>	<b>Carnation Latent Virus. CLV</b>	<b>Size</b>
	Carla Virus. Host range: carnation spp.	DAS ELISA
	Transmission by aphids, mechanical inoculation	
07078S/100	Carnation Latent Virus set	100 tests
07078S/500	Carnation Latent Virus set	500 tests
07078C/096	Carnation Latent Virus complete kit	96 tests
07078C/480	Carnation Latent Virus complete kit	480 tests
07078PC	Positive Control Carnation Latent Virus	1 vial (10 tests)
07078NC	Negative Control Carnation Latent Virus	1 vial (10 tests)
<b>07057</b>	<b>Carnation Mottle Virus. CarMV</b>	<b>Size</b>
	Carmovirus. Host range: carnation spp.	DAS ELISA
	Transmission by contacts between plants, mechanical inoculation	
07057S/100	Carnation Mottle Virus set	100 tests
07057S/500	Carnation Mottle Virus set	500 tests
07057C/096	Carnation Mottle Virus complete kit	96 tests
07057C/480	Carnation Mottle Virus complete kit	480 tests
07057PC	Positive Control Carnation Mottle Virus	1 vial (10 tests)
07057NC	Negative Control Carnation Mottle Virus	1 vial (10 tests)
<b>07019</b>	<b>Carnation Ringspot Virus. CRSV</b>	<b>Size</b>
	Dianthovirus. Host range: carnation spp.	DAS ELISA
	Transmission by contact between plants, mechanical inoculation, nematodes	
07019S/100	Carnation Ringspot Virus set	100 tests
07019S/500	Carnation Ringspot Virus set	500 tests
07019C/096	Carnation Ringspot Virus complete kit	96 tests
07019C/480	Carnation Ringspot Virus complete kit	480 tests
07019PC	Positive Control Carnation Ringspot Virus	1 vial (10 tests)
07019NC	Negative Control Carnation Ringspot Virus	1 vial (10 tests)
<b>07020</b>	<b>Carnation Vein Mottle Virus. CVMV</b>	<b>Size</b>
	Potyvirus. Host range: carnation spp.	DAS ELISA
	Transmission by aphids, mechanical inoculation	
07020S/100	Carnation Vein Mottle Virus set	100 tests
07020S/500	Carnation Vein Mottle Virus set	500 tests
07020C/096	Carnation Vein Mottle Virus complete kit	96 tests
07020C/480	Carnation Vein Mottle Virus complete kit	480 tests
07020PC	Positive Control Carnation Vein Mottle Virus	1 vial (10 tests)
07020NC	Negative Control Carnation Vein Mottle Virus	1 vial (10 tests)

<b>07086</b>	<b>Cauliflower Mosaic Virus. CaMV</b>	<b>Size</b>
	Caulimovirus. Host range: Brassicaceae	DAS ELISA
	Transmission by aphids, mechanical inoculation	
07086S/100	Cauliflower Mosaic Virus set	100 tests
07086S/500	Cauliflower Mosaic Virus set	500 tests
07086C/096	Cauliflower Mosaic Virus complete kit	96 tests
07086C/480	Cauliflower Mosaic Virus complete kit	480 tests
07086PC	Positive Control Cauliflower Mosaic Virus	1 vial (10 tests)
07086NC	Negative Control Cauliflower Mosaic Virus	1 vial (10 tests)
<b>07072</b>	<b>Celery Mosaic Virus. CeMV</b>	<b>Size</b>
	Potyvirus. Host range: carrot, celery, coriander, parsley, parsnip	DAS ELISA
	Transmission by aphids, mechanical inoculation	
07072S/100	Celery Mosaic Virus set	100 tests
07072S/500	Celery Mosaic Virus set	500 tests
07072C/096	Celery Mosaic Virus complete kit	96 tests
07072C/480	Celery Mosaic Virus complete kit	480 tests
07072PC	Positive Control Celery Mosaic Virus	1 vial (10 tests)
07072NC	Negative Control Celery Mosaic Virus	1 vial (10 tests)
<b>07093</b>	<b>Cherry Leafroll Virus b (birch isolate). CLRV b</b>	<b>Size</b>
	Nepovirus. Host range many deciduous trees.	DAS ELISA
	Transmission by mechanical inoculation, nematodes	
07093S/100	Cherry Leafroll Virus b set	100 tests
07093S/500	Cherry Leafroll Virus b set	500 tests
07093C/096	Cherry Leafroll Virus b complete kit	96 tests
07093C/480	Cherry Leafroll Virus b complete kit	480 tests
07093PC	Positive Control Cherry Leafroll Virus b inactivated	1 vial (10 tests)
07093NC	Negative Control Cherry Leafroll Virus b	1 vial (10 tests)
<b>07050</b>	<b>Chilli Mottle Virus see Pepper Mottle Virus</b>	
<b>07185</b>	<b>Chilli Veinal Mottle Virus. ChiVMV</b>	<b>Size</b>
	Potyvirus. Host range Capsicum species	DAS ELISA
	Transmission by aphids, mechanical inoculation	
07185S/100	Chilli Veinal Mottle Virus set	100 tests
07185S/500	Chilli Veinal Mottle Virus set	500 tests
07185C/096	Chilli Veinal Mottle Virus complete kit	96 tests
07185C/480	Chilli Veinal Mottle Virus complete kit	480 tests
07185PC	Positive Control Chilli Veinal Mottle Virus	1 vial (10 tests)
07185NC	Negative Control Chilli Veinal Mottle Virus	1 vial (10 tests)



<b>07014</b>	<b>Cucumber Mosaic Virus DTL. CMV DTL</b>	<b>Size</b>
	Cucumovirus. Strong reaction with ToRS. Host range: many species	DAS ELISA
	Transmission by aphids, mechanical inoculation, seed	
07014S/100	Cucumber Mosaic Virus DTL set	100 tests
07014S/500	Cucumber Mosaic Virus DTL set	500 tests
07014C/096	Cucumber Mosaic Virus DTL complete kit	96 tests
07014C/480	Cucumber Mosaic Virus DTL complete kit	480 tests
07014PC	Positive Control Cucumber Mosaic Virus DTL	1 vial (10 tests)
07014NC	Negative Control Cucumber Mosaic Virus DTL	1 vial (10 tests)
<b>07023</b>	<b>Cucumber Mosaic Virus ToRS</b>	<b>Size</b>
	Cucumovirus. Strong reaction with DTL. Host range: many species	DAS ELISA
	Transmission by aphids, mechanical inoculation, seed	
07023S/100	Cucumber Mosaic Virus ToRS set	100 tests
07023S/500	Cucumber Mosaic Virus ToRS set	500 tests
07023C/096	Cucumber Mosaic Virus ToRS complete kit	96 tests
07023C/480	Cucumber Mosaic Virus ToRS complete kit	480 tests
07023PC	Positive Control Cucumber Mosaic Virus ToRS	1 vial (10 tests)
07023NC	Negative Control Cucumber Mosaic Virus ToRS	1 vial (10 tests)
<b>07108</b>	<b>Cucumber Mosaic Virus artificial mixture</b>	<b>Size</b>
	Cucumovirus. Artificial mixture DTL/ToRS. Host range: many species	DAS ELISA
	Transmission by aphids, seed	
07108S/100	Cucumber Mosaic Virus DTL/ToRS	100 tests
07108S/500	Cucumber Mosaic Virus DTL/ToRS	500 tests
07108C/096	Cucumber Mosaic Virus DTL/ToRS complete kit	96 tests
07108C/480	Cucumber Mosaic Virus DTL/ToRS complete kit	480 tests
07014PC	Positive Control Cucumber Mosaic Virus DTL	1 vial (10 tests)
07108NC	Negative Control Cucumber Mosaic Virus	1 vial (10 tests)
<b>07155</b>	<b>Cucurbit Yellow Stunting Disorder Virus. CYSDV</b>	<b>Size</b>
	Crinivirus. Host range: Cucurbitaceae	DAS ELISA
	Transmission by Bemisia tabacchi	
07155S/100	Cucurbit Yellow Stunting Disorder Virus set	100 tests
07155S/500	Cucurbit Yellow Stunting Disorder Virus set	500 tests
07155C/096	Cucurbit Yellow Stunting Disorder Virus complete kit	96 tests
07155C/480	Cucurbit Yellow Stunting Disorder Virus complete kit	480 tests
07155PC	Positive Control Cucurbit Yellow Stunting Disorder Virus	1 vial (10 tests)
07155NC	Negative Control Cucurbit Yellow Stunting Disorder Virus	1 vial (10 tests)



<b>07018</b>	<b>Cymbidium Mosaic Virus. CymMV</b>	<b>Size</b>
	Potexvirus. Host range: orchids	DAS ELISA
	Transmission by contacts between plants, mechanical inoculation	
07018S/100	Cymbidium Mosaic Virus set	100 tests
07018S/500	Cymbidium Mosaic Virus set	500 tests
07018C/096	Cymbidium Mosaic Virus complete kit	96 tests
07018C/480	Cymbidium Mosaic Virus complete kit	480 tests
07018PC	Positive Control Cymbidium Mosaic Virus	1 vial (10 tests)
07018NC	Negative Control Cymbidium Mosaic Virus	1 vial (10 tests)
<b>07024</b>	<b>Cymbidium Ringspot Virus. CymRSV</b>	<b>Size</b>
	Tombusvirus. Host range: Cymbidium spp. Trifolium repens	DAS ELISA
	Transmission by contact between plants, mechanical inoculation	
07024S/100	Cymbidium Ringspot Virus set	100 tests
07024S/500	Cymbidium Ringspot Virus set	500 tests
07024C/096	Cymbidium Ringspot Virus complete kit	96 tests
07024C/480	Cymbidium Ringspot Virus complete kit	480 tests
07024PC	Positive Control Cymbidium Ringspot Virus	1 vial (10 tests)
07024NC	Negative Control Cymbidium Ringspot Virus	1 vial (10 tests)
<b>07169</b>	<b>Eggplant Mottled Dwarf Virus. EMDV</b>	<b>Size</b>
	Nucleorhabdovirus.	DAS ELISA
	Host range: Cucumber, Hibiscus, Petunia, Tobacco, Tomato	
	Transmission by aphids, leafhoppers, mites, mechanical inoculation	
07169S/100	Eggplant Mottled Dwarf Virus set	100 tests
07169S/500	Eggplant Mottled Dwarf Virus set	500 tests
07169C/096	Eggplant Mottled Dwarf Virus complete kit	96 tests
07169C/480	Eggplant Mottled Dwarf Virus complete kit	480 tests
07169PC	Positive Control Eggplant Mottled Dwarf Virus	1 vial (10 tests)
07169NC	Negative Control Eggplant Mottled Dwarf Virus	1 vial (10 tests)
<b>07025</b>	<b>Freesia Mosaic Virus. FreMV</b>	<b>Size</b>
	Potyvirus. Host range: Freesia	DAS ELISA
	Transmission by aphids, mechanical inoculation	
07025S/100	Freesia Mosaic Virus set	100 tests
07025S/500	Freesia Mosaic Virus set	500 tests
07025C/096	Freesia Mosaic Virus complete kit	96 tests
07025C/480	Freesia Mosaic Virus complete kit	480 tests
07025PC	Positive Control Freesia Mosaic Virus	1 vial (10 tests)
07025NC	Negative Control Freesia Mosaic Virus	1 vial (10 tests)

<b>07055</b>	<b>Grapevine Fanleaf Virus. GFLV</b>	<b>Size</b>
	Nepovirus. Host range: grapevine	DAS ELISA
	Transmission by mechanical inoculation, nematodes	
07055S/100	Grapevine Fanleaf Virus set	100 tests
07055S/500	Grapevine Fanleaf Virus set	500 tests
07055C/096	Grapevine Fanleaf Virus complete kit	96 tests
07055C/480	Grapevine Fanleaf Virus complete kit	480 tests
07055PC	Positive Control Grapevine Fanleaf Virus inactivated	1 vial (10 tests)
07055NC	Negative Control Grapevine Fanleaf Virus	1 vial (10 tests)
<b>07105</b>	<b>Hop Mosaic Virus. HpMV</b>	<b>Size</b>
	Carlavirus. Host range: Hop, stinging nettle	DAS ELISA
	Transmission by aphids, mechanical inoculation	
07105S/100	Hop Mosaic Virus set	100 tests
07105S/500	Hop Mosaic Virus set	500 tests
07105C/096	Hop Mosaic Virus complete kit	96 tests
07105C/480	Hop Mosaic Virus complete kit	480 tests
07105PC	Positive Control Hop Mosaic Virus	1 vial (10 tests)
07105NC	Negative Control Hop Mosaic Virus	1 vial (10 tests)
<b>07504</b>	<b>Groundnut Ringspot Virus. GRSV</b>	<b>Size</b>
	Tospovirus, TSWV serogroup (former serogroup II)	DAS ELISA
	Host range: groundnut, Sol. sessiliflorum	
	Transmission by mechanical inoculation, thrips	
07504S/100	Groundnut Ringspot Virus set	100 tests
07504S/500	Groundnut Ringspot Virus set	500 tests
07504S/1000	Groundnut Ringspot Virus set	1000 tests
07503C/096	Groundnut Ringspot Virus complete kit	96 tests
07504C/480	Groundnut Ringspot Virus complete kit	480 tests
07504C/960	Groundnut Ringspot Virus complete kit	960 tests
07504PC	Positive Control Groundnut Ringspot Virus	1 vial (10 tests)
07504NC	Negative Control Groundnut Ringspot Virus	1 vial (10 tests)
<b>07026S</b>	<b>Hydrangea Ringspot Virus. HRSV</b>	<b>Size</b>
	Potexvirus. Host range: Hydrangea	DAS ELISA
	Transmission by mechanical inoculation, naturally without vector	
07026S/100	Hydrangea Ringspot Virus set	100 tests
07026S/500	Hydrangea Ringspot Virus set	500 tests
07026C/096	Hydrangea Ringspot Virus complete kit	96 tests
07026C/480	Hydrangea Ringspot Virus complete kit	480 tests
07026PC	Positive Control Hydrangea Ringspot Virus	1 vial (10 tests)
07026NC	Negative Control Hydrangea Ringspot Virus	1 vial (10 tests)

<b>07505</b>	<b>Impatiens Necrotic Spot Virus. INSV</b>	<b>Size</b>
	Tospovirus serogroup III. Host range: many plant species	DAS ELISA
	Transmission by mechanical inoculation, thrips	
07505S/100	Impatiens Necrotic Spot Virus set	100 tests
07505S/500	Impatiens Necrotic Spot Virus set	500 tests
07505S/1000	Impatiens Necrotic Spot Virus set	1000 tests
07505C/096	Impatiens Necrotic Spot Virus complete kit	96 tests
07505C/480	Impatiens Necrotic Spot Virus complete kit	480 tests
07505C/960	Impatiens Necrotic Spot Virus complete kit	960 tests
07505PC	Positive Control Impatiens Necrotic Spot Virus	1 vial (10 tests)
07505NC	Negative Control Impatiens Necrotic Spot Virus	1 vial (10 tests)
<b>07508</b>	<b>Iris Yellow Spot Virus. IYSV</b>	<b>Size</b>
	Tospovirus. Host range: garlic, Hippeastrum, Iris, leek, Lisianthus,	DAS ELISA
	Transmission by mechanical inoculation, thrips	
07508S/100	Iris Yellow Spot Virus set	100 tests
07508S/500	Iris Yellow Spot Virus set	500 tests
07508S/1000	Iris Yellow Spot Virus set	1000 tests
07508C/096	Iris Yellow Spot Virus set	96 tests
07508C/480	Iris Yellow Spot Virus complete kit	480 tests
07508C/960	Iris Yellow Spot Virus complete kit	960 tests
07508PC	Positive Control Iris Yellow Spot Virus	1 vial (10 tests)
07508NC	Negative Control Iris Yellow Spot Virus	1 vial (10 tests)
<b>07107</b>	<b>Johnson Grass Mosaic Virus (Syn. Maize Dwarf Virus 0). JGMV</b>	<b>Size</b>
	Potyvirus. Host range: Avena sativa, Sorghum, Zea mays	DAS ELISA
	Transmission by aphids, mechanical inoculation	
07107S/100	Johnson Grass Mosaic Virus set	100 tests
07107S/500	Johnson Grass Mosaic Virus set	500 tests
07107C/096	Johnson Grass Mosaic Virus complete kit	96 tests
07107C/480	Johnson Grass Mosaic Virus complete kit	480 tests
07107PC	Positive Control Johnson Grass Mosaic Virus	1 vial (10 tests)
07107NC	Negative Control Johnson Grass Mosaic Virus	1 vial (10 tests)
<b>07027</b>	<b>Lettuce Mosaic Virus. LMV</b>	<b>Size</b>
	Potyvirus. Host range: endive, lettuce, ornamentals, peas, spinach	DAS ELISA
	Transmission by aphids, mechanical inoculation, seed	
07027S/100	Lettuce Mosaic Virus set	100 tests
07027S/500	Lettuce Mosaic Virus set	500 tests
07027C/096	Lettuce Mosaic Virus complete kit	96 tests
07027C/480	Lettuce Mosaic Virus complete kit	480 tests
07027PC	Positive Control Lettuce Mosaic Virus	1 vial (10 tests)
07027NC	Negative Control Lettuce Mosaic Virus	1 vial (10 tests)







<b>07073</b>	<b>Pelargonium Flower Break Virus. PFBV</b>	<b>Size</b>
	Carmovirus. Host range: Pelargonium species	DAS ELISA
	Transmission by contacts, grafting	
07073S/100	Pelargonium Flower Break Virus set	100 tests
07073S/500	Pelargonium Flower Break Virus set	500 tests
07073C/096	Pelargonium Flower Break Virus complete kit	96 tests
07073C/480	Pelargonium Flower Break Virus complete kit	480 tests
07073PC	Positive Control Pelargonium Flower Break Virus	1 vial (10 tests)
07073NC	Negative Control Pelargonium Flower Break Virus	1 vial (10 tests)
<b>07083</b>	<b>Pelargonium Leafcurl Virus. PLCV</b>	<b>Size</b>
	Tombusvirus. Host range: Pelargonium species	DAS ELISA
	Transmission by contacts, grafting and mechanical inoculation	
07083S/100	Pelargonium Leafcurl Virus set	100 tests
07083S/500	Pelargonium Leafcurl Virus set	500 tests
07083C/096	Pelargonium Leafcurl Virus complete kit	96 tests
07083C/480	Pelargonium Leafcurl Virus complete kit	480 tests
07083PC	Positive Control Pelargonium Leafcurl Virus	1 vial (10 tests)
07083NC	Negative Control Pelargonium Leafcurl Virus	1 vial (10 tests)
<b>07094</b>	<b>Pelargonium Line Pattern Virus. PLPV</b>	<b>Size</b>
	Carmovirus. Host range: Pelargonium species	DAS ELISA
	Transmission by contacts, grafting and mechanical inoculation	
07094S/100	Pelargonium Line Pattern Virus set	100 tests
07094S/500	Pelargonium Line Pattern Virus set	500 tests
07094C/096	Pelargonium Line Pattern Virus complete kit	96 tests
07094C/480	Pelargonium Line Pattern Virus complete kit	480 tests
07094PC	Positive Control Pelargonium Line Pattern Virus	1 vial (10 tests)
07094NC	Negative Control Pelargonium Line Pattern Virus	1 vial (10 tests)
	<b>Pepino Latent Virus see Potato Virus S</b>	
<b>07128</b>	<b>Pepino Mosaic Virus. PepMV</b>	<b>Size</b>
	Potexvirus. Host range: pepino, tomato	DAS ELISA
	Transmitted by contact, mechanical inoculation and seed	
07128S/100	Pepino Mosaic Virus set	100 tests
07128S/500	Pepino Mosaic Virus set	500 tests
07128C/096	Pepino Mosaic Virus complete kit	96 tests
07128C/480	Pepino Mosaic Virus complete kit	480 tests
07128PC	Positive Control Pepino Mosaic Virus	1 vial (10 tests)
07128NC	Negative Control Pepino Mosaic Virus	1 vial (10 tests)



07175	Plum Pox Virus. PPV (detects D, El Amar, M, Sour Cherry strains etc.)	Size
	Potyvirus. Host range: Prunus species	DAS ELISA
	Transmission by aphids and mechanical inoculation	
07175S/100	Plum Pox Virus set	100 tests
07175S/500	Plum Pox Virus set	500 tests
07175S/1000	Plum Pox Virus set	1000 tests
07175C/096	Plum Pox Virus complete kit	96 tests
07175C/480	Plum Pox Virus complete kit	480 tests
07175C/960	Plum Pox Virus complete kit	960 tests
07210PC	Positive Control Quarantine GAR unpecific	1 vial (10 tests)
07175NC	Negative Control Plum Pox Virus	1 vial (10 tests)
07109	Poinsettia Mosaic Virus. PnMV	Size
	Marafivirus. Host range: Euphorbia species	DAS ELISA
	Transmission by grafting and mechanical inoculation	
07109S/100	Poinsettia Mosaic Virus set	100 tests
07109S/500	Poinsettia Mosaic Virus set	500 tests
07109C/096	Poinsettia Mosaic Virus complete kit	96 tests
07109C/480	Poinsettia Mosaic Virus complete kit	480 tests
07109PC	Positive Control Poinsettia Mosaic Virus	1 vial (10 tests)
07109NC	Negative Control Poinsettia Mosaic Virus	1 vial (10 tests)
07039	Poplar Mosaic Virus. PopMV	Size
	Carlavirus. Host range: poplar species	DAS ELISA
	Transmission by grafting and mechanical inoculation	
07039S/100	Poplar Mosaic Virus set	100 tests
07039S/500	Poplar Mosaic Virus set	500 tests
07039C/096	Poplar Mosaic Virus complete kit	96 tests
07039C/480	Poplar Mosaic Virus complete kit	480 tests
07039PC	Positive Control Poplar Mosaic Virus	1 vial (10 tests)
07039NC	Negative Control Poplar Mosaic Virus	1 vial (10 tests)
07145	Potato Black Ringspot Virus. PBRSV	Size
	(Potato Calico strain of Tobacco Ringspot Virus)	DAS ELISA
	Nepovirus. Host range: Potatoes, other solanaceous plants susceptible	
	Transmission by grafting and mechanical inoculation	
07145S/100	Potato Black Ringspot Virus set	100 tests
07145S/500	Potato Black Ringspot Virus set	500 tests
07145C/096	Potato Black Ringspot Virus complete kit	96 tests
07145C/480	Potato Black Ringspot Virus complete kit	480 tests
07145PC	Positive Control Potato Black Ringspot Virus inactivated	1 vial (10 tests)
07145NC	Negative Control Potato Black Ringspot Virus	1 vial (10 tests)



<b>07031</b>	<b>Potato Leafroll Virus. PLRV</b>	<b>Size</b>
	Poterovirus. Host range: potatoes and some other solanaceous species	DAS ELISA
	Transmission by aphids and grafting	
07031S/100	Potato Leafroll Virus set	100 tests
07031S/500	Potato Leafroll Virus set	500 tests
07031S/1000	Potato Leafroll Virus set	1000 tests
07031S/5000	Potato Leafroll Virus set	5000 tests
07031C/480	Potato Leafroll Virus complete kit	480 tests
07031C/960	Potato Leafroll Virus complete kit	960 tests
07031PC	Positive Control Potato Leafroll Virus	1 vial (10 tests)
07031NC	Negative Control Potato Leafroll Virus	1 vial (10 tests)
<b>07032</b>	<b>Potato Virus A. PVA</b>	<b>Size</b>
	Potyvirus. Host range: Solanaceae	DAS ELISA
	Transmission by aphids and mechanical inoculation	
07032S/100	Potato Virus A set	100 tests
07032S/500	Potato Virus A set	500 tests
07032S/1000	Potato Virus A set	1000 tests
07032S/5000	Potato Virus A set	5000 tests
07032C/480	Potato Virus A complete kit	480 tests
07032C/960	Potato Virus A complete kit	960 tests
07032PC	Positive Control Potato Virus A	1 vial (10 tests)
07032NC	Negative Control Potato Virus A	1 vial (10 tests)
<b>07033</b>	<b>Potato Virus M. PVM</b>	<b>Size</b>
	Carlavirus. Host range: potatoes and other solanaceous species	DAS ELISA
	Transmission by aphids, grafting and mechanical inoculation	
07033S/100	Potato Virus M set	100 tests
07033S/500	Potato Virus M set	500 tests
07033S/1000	Potato Virus M set	1000 tests
07033S/5000	Potato Virus M set	5000 tests
07033C/480	Potato Virus M complete kit	480 tests
07033C/960	Potato Virus M complete kit	960 tests
07033PC	Positive Control Potato Virus M	1 vial (10 tests)
07033NC	Negative Control Potato Virus M	1 vial (10 tests)
<b>07034</b>	<b>Potato Virus S. PVS (Pepino Latent Virus)</b>	<b>Size</b>
	Carlavirus. Host range: potatoes	DAS ELISA
	Transmission by aphids and mechanical inoculation	
07034S/100	Potato Virus S set	100 tests
07034S/500	Potato Virus S set	500 tests
07034S/1000	Potato Virus S set	1000 tests
07034S/5000	Potato Virus S set	5000 tests
07034C/480	Potato Virus S complete kit	480 tests
07034C/960	Potato Virus S complete kit	960 tests
07034PC	Positive Control Potato Virus S	1 vial (10 tests)
07034NC	Negative Control Potato Virus S	1 vial (10 tests)

<b>07037</b>	<b>Potato Virus X. PVX</b>	<b>Size</b>
	Potexvirus. Host range: potatoes	DAS ELISA
	Transmission by contacts between plants and mechanical inoculation	
07037S/100	Potato Virus X set	100 tests
07037S/500	Potato Virus X set	500 tests
07037S/1000	Potato Virus X set	1000 tests
07037S/5000	Potato Virus X set	5000 tests
07037C/480	Potato Virus X complete kit	480 tests
07037C/960	Potato Virus X complete kit	960 tests
07037PC	Positive Control Potato Virus X	1 vial (10 tests)
07037NC	Negative Control Potato Virus X	1 vial (10 tests)
<b>07038</b>	<b>Potato Virus Y. PVY</b>	<b>Size</b>
	Potyvirus. Host range: solanaceous plants	DAS ELISA
	Transmission by aphids, grafting and mechanical inoculation	
07038S/100	Potato Virus Y set	100 tests
07038S/500	Potato Virus Y set	500 tests
07038S/1000	Potato Virus Y set	1000 tests
07038S/5000	Potato Virus Y set	5000 tests
07038C/480	Potato Virus Y complete kit	480 tests
07038C/960	Potato Virus Y complete kit	960 tests
07038PC	Positive Control Potato Virus Y	1 vial (10 tests)
07038NC	Negative Control Potato Virus Y	1 vial (10 tests)
<b>07051</b>	<b>Prune Dwarf Virus. PDV</b>	<b>Size</b>
	Ilarvirus. Host range: Prunus species	DAS ELISA
	Transmission by grafting, mechanical inoculation, pollen-to-seed, seed	
07051S/100	Prune Dwarf Virus set	100 tests
07051S/500	Prune Dwarf Virus set	500 tests
07051S/1000	Prune Dwarf Virus set	1000 tests
07051C/096	Prune Dwarf Virus complete kit	96 tests
07051C/480	Prune Dwarf Virus complete kit	480 tests
07051C/960	Prune Dwarf Virus complete kit	960 tests
07051PC	Positive Control Prune Dwarf Virus	1 vial (10 tests)
07051NC	Negative Control Prune Dwarf Virus	1 vial (10 tests)
<b>07052</b>	<b>Prunus Necrotic Ringspot Virus. PNRV</b>	<b>Size</b>
	Ilarvirus. Host range: cucumber, hop, Prunus species	DAS ELISA
	Transmission by grafting, mechanical inoculation, pollen-to-seed, seed	
07052S/100	Prunus Necrotic Ringspot Virus set	100 tests
07052S/500	Prunus Necrotic Ringspot Virus set	500 tests
07052S/1000	Prunus Necrotic Ringspot Virus set	1000 tests
07052C/096	Prunus Necrotic Ringspot Virus complete kit	96 tests
07052C/480	Prunus Necrotic Ringspot Virus complete kit	480 tests
07052C/960	Prunus Necrotic Ringspot Virus complete kit	960 tests
07052PC	Positive Control Prunus Necrotic Ringspot Virus	1 vial (10 tests)
07052NC	Negative Control Prunus Necrotic Ringspot Virus	1 vial (10 tests)

<b>07087</b>	<b>Radish Mosaic Virus. RaMV</b>	<b>Size</b>
	Comovirus. Host range: Brassica species	DAS ELISA
	Transmission by beetles, grafting and mechanical inoculation	
07087S/100	Radish Mosaic Virus set	100 tests
07087S/500	Radish Mosaic Virus set	500 tests
07087C/096	Radish Mosaic Virus complete kit	96 tests
07087C/480	Radish Mosaic Virus complete kit	480 tests
07087PC	Positive Control Radish Mosaic Virus	1 vial (10 tests)
07087NC	Negative Control Radish Mosaic Virus	1 vial (10 tests)
<b>07080</b>	<b>Raspberry Bushy Dwarf Virus. RBDV</b>	<b>Size</b>
	Idaeovirus. Host range: Rubus species	DAS ELISA
	Transmission by grafting, mechanical inoculation and seed	
07080S/100	Raspberry Bushy Dwarf Virus set	100 tests
07080S/500	Raspberry Bushy Dwarf Virus set	500 tests
07080C/096	Raspberry Bushy Dwarf Virus complete kit	96 tests
07080C/480	Raspberry Bushy Dwarf Virus complete kit	480 tests
07080PC	Positive Control Raspberry Bushy Dwarf Virus	1 vial (10 tests)
07080NC	Negative Control Raspberry Bushy Dwarf Virus	1 vial (10 tests)
<b>07141</b>	<b>Raspberry Ringspot Virus BroadRange. RpRSV</b>	<b>Size</b>
	artificial mixture of antisera	DAS ELISA
	Nepovirus. Host range: grapevine, Rubus species, strawberry,	
	Transmission by mechanical inoculation, nematodes, pollen-to-seed, seed	
07141S/100	Raspberry Ringspot Virus set	100 tests
07141S/500	Raspberry Ringspot Virus set	500 tests
07141C/096	Raspberry Ringspot Virus complete kit	96 tests
07141C/480	Raspberry Ringspot Virus complete kit	480 tests
07144PC	Positive Control Raspberry Ringspot Virus g inactivated	1 vial (10 tests)
07151NC	Negative Control Raspberry Ringspot Virus	1 vial (10 tests)
<b>07142</b>	<b>Raspberry Ringspot Virus (cherry isolate). RpRSV ch</b>	<b>Size</b>
		DAS ELISA
07142S/100	Raspberry Ringspot Virus ch set	100 tests
07142S/500	Raspberry Ringspot Virus ch set	500 tests
07142C/096	Raspberry Ringspot Virus ch complete kit	96 tests
07142C/480	Raspberry Ringspot Virus ch complete kit	480 tests
07210PC	Positive Control Quarantine GAR unspecific	1 vial (10 tests)
07142NC	Negative Control Raspberry Ringspot Virus ch	1 vial (10 tests)
<b>07143</b>	<b>Raspberry Ringspot Virus (raspberry isolate). RpRSV r</b>	<b>Size</b>
		DAS ELISA
07143S/100	Raspberry Ringspot Virus r set	100 tests
07143S/500	Raspberry Ringspot Virus r set	500 tests
07143C/096	Raspberry Ringspot Virus r complete kit	96 tests
07143C/480	Raspberry Ringspot Virus r complete kit	480 tests
07154PC	Positive Control Raspberry Ringspot Virus r inactivated	1 vial (10 tests)
07154NC	Negative Control Raspberry Ringspot Virus r	1 vial (10 tests)

<b>07144</b>	<b>Raspberry Ringspot Virus (grapevine isolate). RpRSV g</b>	<b>Size</b>
		DAS ELISA
07144S/100	Raspberry Ringspot Virus g set	100 tests
07144S/500	Raspberry Ringspot Virus g set	500 tests
07144C/096	Raspberry Ringspot Virus g complete kit	96 tests
07144C/480	Raspberry Ringspot Virus g complete kit	480 tests
07144PC	Positive Control Raspberry Ringspot Virus g inactivated	1 vial (10 tests)
07144NC	Negative Control Raspberry Ringspot Virus g	1 vial (10 tests)
<b>07040</b>	<b>Red Clover Mottle Virus. RCMV</b>	<b>Size</b>
	Comovirus. Host range Trifolium pratense	DAS ELISA
	Transmission by beetles and mechanical inoculation	
07040S/100	Red Clover Mottle Virus set	100 tests
07040S/500	Red Clover Mottle Virus set	500 tests
07040C/096	Red Clover Mottle Virus complete kit	96 tests
07040C/480	Red Clover Mottle Virus complete kit	480 tests
07040PC	Positive Control Red Clover Mottle Virus	1 vial (10 tests)
07040NC	Negative Control Red Clover Mottle Virus	1 vial (10 tests)
	<b>Ribgrass Mosaic Virus detection of see 07042 Tobacco Mosaic Virus and 07184 Tobamoscreen I<sup>®</sup></b>	
07121	Positive Control Ribgrass Mosaic Virus	1 vial (10 tests)
<b>07133</b>	<b>Rice Yellow Mottle Virus. RYMV</b>	<b>Size</b>
	Sobemovirus. Host range: rice	DAS ELISA
	Transmission by beetles and mechanical inoculation	
07133S/100	Rice Yellow Mottle Virus set	100 tests
07133S/500	Rice Yellow Mottle Virus set	500 tests
07133C/096	Rice Yellow Mottle Virus complete kit	96 tests
07133C/480	Rice Yellow Mottle Virus complete kit	480 tests
07133PC	Positive Control Rice Yellow Mottle Virus	1 vial (10 tests)
07133NC	Negative Control Rice Yellow Mottle Virus	1 vial (10 tests)
<b>07173</b>	<b>Soil-borne Cereal Mosaic Virus. SbCMV polyclonal/ monoclonal</b>	<b>Size</b>
	Furovirus. Host range: barley, wheat, rye	TAS ELISA
	Transmission by a soil-borne fungus	
07173S/100	Soil-borne Cereal Mosaic Virus set	100 tests
07173S/500	Soil-borne Cereal Mosaic Virus set	500 tests
07173C/096	Soil-borne Cereal Mosaic Virus complete kit	96test
07173C/480	Soil-borne Cereal Mosaic Virus complete kit	480 tests
07173PC	Soil-borne Cereal Mosaic Virus Positive Control	1 vial (10 tests)
07173NC	Soil-borne Cereal Mosaic Virus Negative Control	1 vial (10 tests)





<b>07036</b>	<b>Tobacco Necrosis Virus Broad Range (artificial mixture). TNV</b>	<b>Size</b>
	Necrovirus. Host range many species	DAS ELISA
	Transmission by <i>Olpidium brassicae</i> and by mechanical inoculation	
07036S/100	Tobacco Necrosis Virus set	100 tests
07036S/500	Tobacco Necrosis Virus set	500 tests
07036C/096	Tobacco Necrosis Virus complete kit	96 tests
07036C/480	Tobacco Necrosis Virus complete kit	480 tests
07046PC	Positive Control Tobacco Necrosis Virus A	1 vial (10 tests)
07036NC	Negative Control Tobacco Necrosis Virus	1 vial (10 tests)
<b>07046</b>	<b>Tobacco Necrosis Virus A. TNV A</b>	<b>Size</b>
		DAS ELISA
07046S/100	Tobacco Necrosis Virus A set	100 tests
07046S/500	Tobacco Necrosis Virus A set	500 tests
07046C/096	Tobacco Necrosis Virus A set	96 tests
07046C/480	Tobacco Necrosis Virus A complete kit	480 tests
07046PC	Positive Control Tobacco Necrosis Virus A	1 vial (10 tests)
07046NC	Negative Control Tobacco Necrosis Virus A	1 vial (10 tests)
<b>07035</b>	<b>Tobacco Necrosis Virus (cherry isolate). TNV ch</b>	<b>Size</b>
		DAS ELISA
07035S/100	Tobacco Necrosis Virus ch set	100 tests
07035S/500	Tobacco Necrosis Virus ch set	500 tests
07035C/096	Tobacco Necrosis Virus ch complete kit	96 tests
07035C/480	Tobacco Necrosis Virus ch complete kit	480 tests
07035PC	Positive Control Tobacco Necrosis Virus ch	1 vial (10 tests)
07035NC	Negative Control Tobacco Necrosis Virus ch	1 vial (10 tests)
<b>07043</b>	<b>Tobacco Necrosis Virus E. TNV E</b>	<b>Size</b>
		DAS ELISA
07043S/100	Tobacco Necrosis Virus E set	100 tests
07043S/500	Tobacco Necrosis Virus E set	500 tests
07043C/096	Tobacco Necrosis Virus E complete kit	96 tests
07043C/480	Tobacco Necrosis Virus E complete kit	480 tests
07043PC	Positive Control Tobacco Necrosis Virus E	1 vial (10 tests)
07043NC	Negative Control Tobacco Necrosis Virus E	1 vial (10 tests)
<b>07152</b>	<b>Tobacco Rattle Virus BroadRange. TRV (artificial mixture of antisera)</b>	<b>Size</b>
	Tobravirus. Host range: many species	DAS ELISA
	Transmission by grafting, mechanical inoculation, nematodes, seed	
07152S/100	Tobacco Rattle Virus set	100 tests
07152S/500	Tobacco Rattle Virus set	500 tests
07152C/096	Tobacco Rattle Virus complete kit	96 tests
07152C/480	Tobacco Rattle Virus complete kit	480 tests
07044PC	Positive Control Tobacco Rattle Virus K	1 vial (10 tests)
07152NC	Negative Control Tobacco Rattle Virus	1 vial (10 tests)

<b>07116</b>	<b>Tobacco Rattle Virus (Jeffersonia Isolate). TRV J</b>	<b>Size</b>
		DAS ELISA
07116S/100	Tobacco Rattle Virus J set	100 tests
07116S/500	Tobacco Rattle Virus J set	500 tests
07116C/096	Tobacco Rattle Virus J complete kit	96 tests
07116C/480	Tobacco Rattle Virus J complete kit	480 tests
07116PC	Positive Control Tobacco Rattle Virus J	1 vial (10 tests)
07116NC	Negative Control Tobacco Rattle Virus J	1 vial (10 tests)
<b>07044</b>	<b>Tobacco Rattle Virus K. TRV K</b>	<b>Size</b>
		DAS ELISA
07044S/100	Tobacco Rattle Virus K set	100 tests
07044S/500	Tobacco Rattle Virus K set	500 tests
07044C/096	Tobacco Rattle Virus K complete kit	96 tests
07044C/480	Tobacco Rattle Virus K complete kit	480 tests
07044PC	Positive Control Tobacco Rattle Virus K	1 vial (10 tests)
07044NC	Negative Control Tobacco Rattle Virus K	1 vial (10 tests)
<b>07113</b>	<b>Tobacco Rattle Virus M. TRV M</b>	<b>Size</b>
		DAS ELISA
07113S/100	Tobacco Rattle Virus M set	100 tests
07113S/500	Tobacco Rattle Virus M set	500 tests
07113C/096	Tobacco Rattle Virus M complete kit	96 tests
07113C/480	Tobacco Rattle Virus M complete kit	480 tests
07113PC	Positive Control Tobacco Rattle Virus M	1 vial (10 tests)
07113NC	Negative Control Tobacco Rattle Virus M	1 vial (10 tests)
<b>07168</b>	<b>Tobacco Ringspot Virus. TRSV</b>	
	Nepovirus. Host range: cucumber, soybean, tomato	DAS ELISA
	Transmission by mechanical inoculation, nematodes, other vectors, seed	
07168S/100	Tobacco Ringspot Virus set	100 tests
07168S/500	Tobacco Ringspot Virus set	500 tests
07168C/096	Tobacco Ringspot Virus complete kit	96 tests
07168C/480	Tobacco Ringspot Virus complete kit	480 tests
07210PC	Positive Control Quarantine GAR unspecific	1 vial (10 tests)
07168NC	Negative Control Tobacco Ringspot Virus	1 vial (10 tests)
<b>07184</b>	<b>Tobamoscreen® I detecting PMMoV, RMV, TMV and ToMV designed for testing Tobamoviruses in pepper species</b>	<b>Size</b>
		DAS ELISA
07184S/100	Tobamoscreen® I	100 tests
07184S/500	Tobamoscreen® I	500 tests
07184C/096	Tobamoscreen® I complete kit	96 test
07185C/480	Tobamoscreen® I complete kit	480 test
07096PC	Positive Control Pepper Mild Mottle Virus	1 vial (10 tests)
07042PC	Positive Control Tobacco Mosaic Virus	1 vial (10 tests)
07047PC	Positive Control Tomato Mosaic Virus	1 vial (10 tests)
07184NC	Negative Control Tobamoscreen® I	1 vial (10 tests)

<b>07045</b>	<b>Tomato Aspermy Virus. TAV ( Chrysanthemum Aspermy Virus )</b>	<b>Size</b>
	Cucumovirus. Host range: Chrysanthemum myrtifolium, tomato	DAS ELISA
	Transmission by grafting, mechanical inoculation and seed	
07045S/100	Tomato Aspermy Virus set	100 tests
07045S/500	Tomato Aspermy Virus set	500 tests
07045C/096	Tomato Aspermy Virus complete kit	96 tests
07045C/480	Tomato Aspermy Virus complete kit	480 tests
07045PC	Positive Control Tomato Aspermy Virus	1 vial (10 tests)
07045NC	Negative Control Tomato Aspermy Virus	1 vial (10 tests)
<b>07062</b>	<b>Tomato Blackring Virus. TBRV (Potato Bouquet Virus)</b>	<b>Size</b>
	Nepovirus. Host range: many species	DAS ELISA
	Transmission by grafting, mechanical inoculation, nematodes and seed	
07062S/100	Tomato Blackring Virus set	100 tests
07062S/500	Tomato Blackring Virus set	500 tests
07062C/096	Tomato Blackring Virus complete kit	96 tests
07062C/480	Tomato Blackring Virus complete kit	480 tests
07062PC	Positive Control Tomato Blackring Virus inactivated	1 vial (10 tests)
07062NC	Negative Control Tomato Blackring Virus	1 vial (10 tests)
<b>07067</b>	<b>Tomato Bushy Stunt Virus. TBSV</b>	<b>Size</b>
	Tombusvirus. Host range: solanaceous species, tulips etc.	DAS ELISA
	Transmission by grafting, mechanical inoculation and seed	
07067S/100	Tomato Bushy Stunt Virus set	100 tests
07067S/500	Tomato Bushy Stunt Virus set	500 tests
07067C/096	Tomato Bushy Stunt Virus complete kit	96 tests
07067C/480	Tomato Bushy Stunt Virus complete kit	480 tests
07067PC	Positive Control Tomato Bushy Stunt Virus	1 vial (10 tests)
07067NC	Negative Control Tomato Bushy Stunt Virus	1 vial (10 tests)
<b>07503</b>	<b>Tomato Chlorotic Spot Virus. TCSV</b>	<b>Size</b>
	Tospovirus, TSWV serogroup (former serogroup II)	DAS ELISA
	Host range: lettuce, tomato	
	Transmission by mechanical inoculation and thrips	
07503S/100	Tomato Chlorotic Spot Virus set	100 tests
07503S/500	Tomato Chlorotic Spot Virus set	500 tests
07503S/1000	Tomato Chlorotic Spot Virus set	1000 tests
07603C/096	Tomato Chlorotic Spot Virus complete kit	96 tests
07503C/480	Tomato Chlorotic Spot Virus complete kit	480 tests
07503C/960	Tomato Chlorotic Spot Virus complete kit	960 tests
07503PC	Positive Control Tomato Chlorotic Spot Virus	1 vial (10 tests)
07503NC	Negative Control Tomato Chlorotic Spot Virus	1 vial (10 tests)

<b>07047</b>	<b>Tomato Mosaic Virus (Dahlemense strain). ToMV</b>	<b>Size</b>
	Tobamovirus. Host range: tomato	DAS ELISA
	Transmission by contact between plants, mechanical inoculation, seed	
07047S/100	Tomato Mosaic Virus set	100 tests
07047S/500	Tomato Mosaic Virus set	500 tests
07047C/096	Tomato Mosaic Virus complete kit	96 tests
07047C/480	Tomato Mosaic Virus complete kit	480 tests
07047PC	Positive Control Tomato Mosaic Virus	1 vial (10 tests)
07047NC	Negative Control Tomato Mosaic Virus	1 vial (10 tests)
<b>07084</b>	<b>Tomato Ringspot Virus (pelargonium isolate). ToRSV</b>	<b>Size</b>
	Nepovirus. Host range: grapevine, pelargonium, pome fruits etc.	DAS ELISA
	Transmission by grafting, mechanical inoculation, Xiphinemia, seed	
07084S/100	Tomato Ringspot Virus set	100 tests
07084S/500	Tomato Ringspot Virus set	500 tests
07084C/096	Tomato Ringspot Virus complete kit	96 tests
07084C/480	Tomato Ringspot Virus complete kit	480 tests
07084PC	Positive Control Tomato Ringspot Virus inactivated	1 vial (10 tests)
07084NC	Negative Control Tomato Ringspot Virus	1 vial (10 tests)
<b>07501</b>	<b>Tomato Spotted Wilt Virus. TSWV</b>	<b>Size</b>
	Tospovirus (former serogroup I). Host range: many species	DAS ELISA
	Transmission by grafting, mechanical inoculation and thrips	
07501S/100	Tomato Spotted Wilt Virus set	100 tests
07501S/500	Tomato Spotted Wilt Virus set	500 tests
07501S/1000	Tomato Spotted Wilt Virus set	1000 tests
07501C/096	Tomato Spotted Wilt Virus complete kit	96 tests
07501C/480	Tomato Spotted Wilt Virus complete kit	480 tests
07501C/960	Tomato Spotted Wilt Virus complete kit	960 tests
07501PC	Positive Control Tomato Spotted Wilt Virus inactivated	1 vial (10 tests)
07501NC	Negative Control Tomato Spotted Wilt Virus	1 vial (10 tests)
<b>07506</b>	<b>TSWV/INSV (artificial mixture)</b>	<b>Size</b>
		DAS ELISA
07506S/100	TSWV/INSV set	100 tests
07506S/500	TSWV/INSV set	500 tests
07506S/1000	TSWV/INSV set	1000 tests
07506C/096	TSWV/INSV complete kit	96 tests
07506C/480	TSWV/INSV complete kit	480 tests
07506C/960	TSWV/INSV complete kit	960 tests
07501PC	Positive Control TSWV inactivated	1 vial (10 tests)
07505PC	Positive Control INSV	1 vial (10 tests)
07506NC	Negative Control TSWV/INSV	1 vial (10 tests)

<b>07177</b>	<b>Tomato Yellow Leafcurl Virus polyclonal/monoclonal. TYLCV</b>	<b>Size</b>
	<b>detects TYLCV and TYLCSV</b>	TAS ELISA
	Bigeminivirus. Host range: tomatoes	
	Transmission by Bemisia tabacchi	
07177S/ 100	Tomato Yellow Leafcurl Virus set	100 tests
07177S/500	Tomato Yellow Leafcurl Virus set	500 tests
07177C/096	Tomato Yellow Leafcurl Virus complete kit	96 tests
07177C/480	Tomato Yellow Leafcurl Virus complete kit	480 tests
07177PC	Positive Control Tomato Yellow Leafcurl Virus inactivated	1 vial (10 tests)
07177NC	Negative Control Tomato Yellow Leafcurl Virus	1 vial (10 tests)
<b>07510</b>	<b>Tosposcreen detects TWSV, INSV, TCSV, GRSV, and CSNV</b>	<b>Size</b>
		DAS ELISA
07510/100	Tosposcreen set	100 tests
07510S/500	Tosposcreen set	500 tests
07510S/1000	Tosposcreen set	1000 tests
07510C/096	Tosposcreen complete kit	96 tests
07510C/480	Tosposcreen complete kit	480 tests
07510C/960	Tosposcreen complete kit	960 tests
07501PC	Positive Control TSWV inactivated	1 vial (10 tests)
07505PC	Positive Control INSV	1 vial (10 tests)
07503PC	Positive Control TCSV	1 vial (10 tests)
07504PC	Positive Control GRSV	1 vial (10 tests)
07510NC	Negative Control Tosposcreen	1 vial (10 tests)
<b>07049</b>	<b>Turnip Mosaic Virus (Cabbage Black Ring Virus). TuMV</b>	<b>Size</b>
	Potyvirus. Host range: Brassicaceae, Solanaceae, others	DAS ELISA
	Transmission by aphids and mechanical inoculation	
07049S/100	Turnip Mosaic Virus set	100 tests
07049S/500	Turnip Mosaic Virus set	500 tests
07049C/96	Turnip Mosaic Virus complete kit	96 tests
07049C/480	Turnip Mosaic Virus complete kit	480 tests
07049PC	Positive Control Turnip Mosaic Virus	1 vial (10 tests)
07049NC	Negative Control Turnip Mosaic Virus	1 vial (10 tests)
<b>07091</b>	<b>Turnip Yellow Mosaic Virus. TYMV</b>	<b>Size</b>
	Tymovirus. Host range: Brassicaceae	DAS ELISA
	Transmission by flea beetles, grafting, mechanical inoculation, seed	
07091S/100	Turnip Yellow Mosaic Virus set	100 tests
07091S/500	Turnip Yellow Mosaic Virus set	500 tests
07091C/96	Turnip Yellow Mosaic Virus complete kit	96 tests
07091C/480	Turnip Yellow Mosaic Virus complete kit	480 tests
07091PC	Positive Control Turnip Yellow Mosaic Virus	1 vial (10 tests)
07091NC	Negative Control Turnip Yellow Mosaic Virus	1 vial (10 tests)





<b>07104</b>	<b>Zucchini Yellow Fleck Virus. ZYFV</b>	<b>Size</b>
	Potyvirus. Host range: Cucurbitaceae	DAS ELISA
	Transmission by aphids, contact between plants, mechanical inoculation	
07104S/100	Zucchini Yellow Fleck Virus set	100 tests
07104S/500	Zucchini Yellow Fleck Virus set	500 tests
07104C/096	Zucchini Yellow Fleck Virus complete kit	96 tests
07104C/480	Zucchini Yellow Fleck Virus complete kit	480 tests
07104PC	Positive Control Zucchini Yellow Fleck Virus	1 vial (10 tests)
07104NC	Negative Control Zucchini Yellow Fleck Virus	1 vial (10 tests)
<b>07090</b>	<b>Zucchini Yellow Mosaic Virus. ZYMV</b>	<b>Size</b>
	Potyvirus. Host range: Cucurbitaceae	DAS ELISA
	Transmission by aphids and mechanical inoculation	
07090S/100	Zucchini Yellow Mosaic Virus set	100 tests
07090S/500	Zucchini Yellow Mosaic Virus set	500 tests
07090C/096	Zucchini Yellow Mosaic Virus complete kit	96 tests
07090C/480	Zucchini Yellow Mosaic Virus complete kit	480 tests
07090PC	Positive Control Zucchini Yellow Mosaic Virus	1 vial (10 tests)
07090NC	Negative Control Zucchini Yellow Mosaic Virus	1 vial (10 tests)
	<b>ELISA Products - Bacteria</b>	
<b>07154</b>	<b>Acidovorax avenae ssp. citrulli</b>	<b>Size</b>
	Bacterial fruit blotch. Host range: cucurbits	DAS ELISA
07154S/100	A. avenae ssp. citrulli set	100 tests
07154S/500	A. avenae ssp. citrulli set	500 tests
07154C/096	A. avenae ssp. citrulli complete kit	96 tests
07154C/480	A. avenae ssp. citrulli complete kit	480 tests
07154PC	Positive Control A. avenae ssp. citrulli inactivated	1 vial (10 tests)
07154NC	Negative Control A. avenae ssp. citrulli	1 vial (10 tests)
<b>07063</b>	<b>Clavibacter michiganensis ssp. michiganensis</b>	<b>Size</b>
	Bacterial cancer. Host range: tomatoes, some solanaceous weeds	DAS ELISA
07063S/100	C. m. ssp. michiganensis set	100 tests
07063S/500	C. m. ssp. michiganensis set	500 tests
07063C/096	C. m. ssp. michiganensis complete kit	96 tests
07063C/480	C. m. ssp. michiganensis complete kit	480 tests
07063PC	Positive Control C. m. ssp. michiganensis inactivated	1 vial (10 tests)
07208PC	Positive Control Quarantine RAG unspecific	1 vial (10 tests)
07063NC	Negative Control C. m. ssp. michiganensis	1 vial (10 tests)

<b>07064</b>	<b>Clavibacter michiganensis ssp. sepedonicus</b>	<b>Size</b>
	Bacterial ring rot. Host range: potatoes, some other solanaceous plants	DAS ELISA
07064S/100	C. m. ssp. sepedonicus set	100 tests
07064S/500	C. m. ssp. sepedonicus set	500 tests
07064C/096	C. m. ssp. sepedonicus complete kit	96 tests
07064C/480	C. m. ssp. sepedonicus complete kit	480 tests
07064PC	C. m. ssp. sepedonicus inactivated	1 vial (10 tests)
07208PC	Positive Control Quarantine RAG unspecific	1 vial (10 tests)
07064NC	Negative Control C. m. ssp. sepedonicus	1 vial (10 tests)
<b>07146</b>	<b>Dickeya (Erwinia -,Pectobacterium -) chrysanthemi Saintpaulia Isolate</b>	<b>Size</b>
	Bacterial soft rot. Host range: Chrysanthemum, carrot, chicory, tomato, potato and others	DAS ELISA
07146S/100	Dickeya chrysanthemi set	100 tests
07146S/500	Dickeya chrysanthemi set	500 tests
07146C/096	Dickeya chrysanthemi complete kit	96 tests
07146C/480	Dickeya chrysanthemi complete kit	480 tests
07146PC	Positive Control Dickeya chrysanthemi inactivated	1 vial (10 tests)
07146NC	Negative Control Dickeya chrysanthemi	1 vial (10 tests)
<b>07069</b>	<b>Erwinia amylovora</b>	<b>Size</b>
	Feuerbrand. Fire blight. Host range: Rosaceae	DAS ELISA
07069S/100	Erwinia amylovora set	100 tests
07069S/500	Erwinia amylovora set	500 tests
07069C/096	Erwinia amylovora complete kit	96 tests
07069C/480	Erwinia amylovora complete kit	480 tests
07069PC	Positive Control Erwinia amylovora inactivated	1 vial (10 tests)
07069NC	Negative Control Erwinia amylovora	1 vial (10 tests)
<b>07068</b>	<b>Erwinia carotovora var. atroseptica</b>	<b>Size</b>
	Blackleg disease, soft rot disease. Host range mainly potatoes	DAS ELISA
07068S/100	E. carotovora var. atroseptica set	100 tests
07068S/500	E. carotovora var. atroseptica set	500 tests
07068C/096	E. carotovora var. atroseptica complete kit	96 tests
07068C/480	E. carotovora var. atroseptica complete kit	480 tests
07068PC	Positive Control E. carotovora var. atroseptica inactivated	1 vial (10 tests)
07068NC	Negative Control E. carotovora var. atroseptica	1 vial (10 tests)
<b>07129</b>	<b>Pantoea stewartii ssp. stewartii</b>	<b>Size</b>
	Stewarts disease. Host range: mainly important for maize	DAS ELISA
07129S/100	Pantoea stewartii ssp.stewartii set	100 tests
07129S/500	Pantoea stewartii ssp.stewartii set	500 tests
07129C/096	Pantoea stewartii ssp.stewartii complete kit	96 tests
07129C/480	Pantoea stewartii ssp.stewartii complete kit	480 tests
07129PC	Positive Control Pantoea stewartii ssp.stewartii inactivated	1 vial (10 tests)
07129NC	Negative Control Pantoea stewartii ssp.stewartii	1 vial (10 tests)

<b>07156</b>	<b>Pectobacterium chrysanthemi see Dickeya chrysanthemi</b>	
<b>07070</b>	<b>Pseudomonas savastanoi pv. phaseolicola</b>	<b>Size</b>
	Halo blight of beans. Host range: beans	DAS ELISA
07070S/100	Pseudomonas savastanoi pv. phaseolicola set	100 tests
07070S/500	Pseudomonas savastanoi pv. phaseolicola set	500 tests
07070C/096	Pseudomonas savastanoi pv. phaseolicola complete kit	96 tests
07070C/480	Pseudomonas savastanoi pv. phaseolicola complete kit	480 tests
07070PC	Positive Control Pseudomonas savastanoi pv. phaseolicola inactivated	1 vial (10 tests)
07070NC	Negative Control Pseudomonas savastanoi pv. phaseolicola	1 vial (10 tests)
<b>07147</b>	<b>Pseudomonas syringae pv. lachrymans</b>	<b>Size</b>
	Angular leaf disease, Eckige Blattfleckenkrankheit. Host range: cucurbits	DAS ELISA
07147S/100	Pseudomonas syringae pv. lachrymans set	100 tests
07147S/500	Pseudomonas syringae pv. lachrymans set	500 tests
07147C/096	Pseudomonas syringae pv. lachrymans complete kit	96 tests
07147C/480	Pseudomonas syringae pv. lachrymans complete kit	480 tests
07147PC	Positive Control Pseudomonas syringae pv. lachrymans inactivated	1 vial (10 tests)
07147NC	Negative Control Pseudomonas syringae pv. lachrymans	1 vial (10 tests)
<b>07071</b>	<b>Pseudomonas syringae pv. pisi</b>	<b>Size</b>
	Bacterial blight of peas. Host range: peas	DAS ELISA
07071S/100	Pseudomonas syringae pv. pisi set	100 tests
07071S/500	Pseudomonas syringae pv. pisi set	500 tests
07071C/096	Pseudomonas syringae pv. pisi complete kit	96 tests
07071C/480	Pseudomonas syringae pv. pisi complete kit	480 tests
07071PC	Positive Control Pseudomonas syringae pv. pisi inactivated	1 vial (10 tests)
07071NC	Negative Control Pseudomonas syringae pv. pisi	1 vial (10 tests)
<b>07139</b>	<b>Pseudomonas syringae pv. tomato</b>	<b>Size</b>
	Bacterial speck disease of tomato. Host range: tomatoes	DAS ELISA
07139S/100	Pseudomonas syringae pv. tomato set	100 tests
07139S/500	Pseudomonas syringae pv. tomato set	500 tests
07139C/096	Pseudomonas syringae pv. tomato complete kit	96 tests
07139C/480	Pseudomonas syringae pv. tomato complete kit	480 tests
07139PC	Positive Control Pseudomonas syringae pv. tomato inactivated	1 vial (10 tests)
07139NC	Negative Control Pseudomonas syringae pv. tomato	1 vial (10 tests)
<b>07056</b>	<b>Ralstonia solanacearum</b>	<b>Size</b>
	Pseudomonas solanacearum. Braunfäule. Brown rot (potato), Southern	DAS ELISA
	Bacterial Wilt (tomato). Moko Disease (banana). Wide host range	
07056S/100	Ralstonia solanacearum set	100 tests
07056S/500	Ralstonia solanacearum set	500 tests
07056C/096	Ralstonia solanacearum complete kit	96 tests
07056C/480	Ralstonia solanacearum complete kit	480 tests
07056PC	Positive Control Ralstonia solanacearum inactivated	1 vial (10 tests)
07208PC	Positive Control Quarantine RAG <i>unspecific</i>	1 vial (10 tests)
07056NC	Negative Control Ralstonia solanacearum	1 vial (10 tests)

<b>07170</b>	<b>Rhodococcus fascians</b>	<b>Size</b>
	Coryne bacterium fascians. Wide host range, important for ornamentals	DAS ELISA
07170S/100	Rhodococcus fascians set	100 tests
07170S/500	Rhodococcus fascians set	500 tests
07170C/096	Rhodococcus fascians complete kit	96 tests
07170C/480	Rhodococcus fascians complete kit	480 tests
07170PC	Positive Control Rhodococcus fascians inactivated	1 vial (10 tests)
07170NC	Negative Control Rhodococcus fascians	1 vial (10 tests)
<b>07178</b>	<b>Xanthomonas arboricola pv. corylina</b>	<b>Size</b>
	Bacterial blight of hazelnut. Host range: hazelnut	DAS ELISA
07178S/100	Xanthomonas arboricola pv. corylina set	100 tests
07178S/500	Xanthomonas arboricola pv. corylina set	500 tests
07178C/96	Xanthomonas arboricola pv. corylina complete kit	96 tests
07178C/480	Xanthomonas arboricola pv. corylina complete kit	480 tests
07178PC	Positive Control Xanthomonas arboricola pv. corylina inactivated	1 vial (10 tests)
07178NC	Negative Control Xanthomonas arboricola pv. corylina	1 vial (10 tests)
<b>07125</b>	<b>Xanthomonas axonopodis pv. begoniae</b>	<b>Size</b>
	Bacterial Leaf and Spot Blight. Ölfleckenkrankheit. Host range: Begoniae	DAS ELISA
07125S/100	Xanthomonas axonopodis pv. begoniae set	100 tests
07125S/500	Xanthomonas axonopodis pv. begoniae set	500 tests
07125C/096	Xanthomonas axonopodis pv. begoniae complete kit	96 tests
07125C/480	Xanthomonas axonopodis pv. begoniae complete kit	480 tests
07125PC	Positive Control Xanthomonas axonopodis pv. begoniae inactivated	1 vial (10 tests)
07125NC	Negative Control Xanthomonas axonopodis pv. begoniae	1 vial (10 tests)
<b>07161</b>	<b>Xanthomonas axonopodis pv. phaseoli</b>	<b>Size</b>
	Bakterieller Bohnenbrand, Common Blight, Fettfleckenkrankheit	DAS ELISA
	Host range: beans and some other legumes	
07161S/100	Xanthomonas axonopodis pv. phaseoli set	100 tests
07161S/500	Xanthomonas axonopodis pv. phaseoli set	500 tests
07161C/096	Xanthomonas axonopodis pv. phaseoli complete kit	96 tests
07161C/480	Xanthomonas axonopodis pv. phaseoli complete kit	480 tests
07161PC	Positive Control Xanthomonas axonopodis pv. phaseoli inactivated	vial(10 tests)
07161NC	Negative Control Xanthomonas axonopodis pv. phaseoli	1 vial (10 tests)
<b>07122</b>	<b>Xanthomonas campestris pv. campestris</b>	<b>Size</b>
	Black Rot Disease, Blight and Leafspot of Crucifers.	DAS ELISA
	Host range: Brassicaceae	
07122S/100	Xanthomonas campestris pv. campestris set	100 tests
07122S/500	Xanthomonas campestris pv. campestris set	500 tests
07122C/096	Xanthomonas campestris pv. campestris complete kit	96 tests
07122C/480	Xanthomonas campestris pv. campestris complete kit	480 tests
07122PC	Positive Control Xanthomonas campestris pv. campestris inactivated	1 vial (10 tests)
07122NC	Negative Control Xanthomonas campestris pv. campestris	1 vial (10 tests)

<b>07124</b>	<b>Xanthomonas campestris Lobelia isolate</b>	<b>Size</b>
	Host range: Lobelia	DAS ELISA
07124S/100	Xanthomonas campestris Lobelia isolate set	100 tests
07124S/500	Xanthomonas campestris Lobelia isolate set	500 tests
07124C/096	Xanthomonas campestris Lobelia isolate complete kit	96 tests
07124C/480	Xanthomonas campestris Lobelia isolate complete kit	480 tests
07124PC	Positive Control Xanthomonas campestris Lobelia isolate inactivated	1 vial (10 tests)
07124NC	Negative Control Xanthomonas campestris Lobelia isolate	1 vial (10 tests)
<b>07130</b>	<b>Xanthomonas campestris pv. oryzae see X. oryzae pv. oryzae</b>	
<b>07131</b>	<b>Xanthomonas campestris pv. vesicatoria</b>	<b>Size</b>
	Blackspot Disease of tomatoes. Host range: various Solanaceae	DAS ELISA
07131S/100	Xanthomonas campestris pv. vesicatoria set	100 tests
07131S/500	Xanthomonas campestris pv. vesicatoria set	500 tests
07131C/096	Xanthomonas campestris pv. vesicatoria complete kit	96 tests
07131C/480	Xanthomonas campestris pv. vesicatoria complete kit	480 tests
07131PC	Positive Control Xanthomonas campestris pv. vesicatoria inactivated	1 vial (10 tests)
07131NC	Negative Control Xanthomonas campestris pv. vesicatoria	1 vial (10 tests)
<b>07132</b>	<b>Xanthomonas fragariae</b>	<b>Size</b>
	Bacterial Angular Leafspot of strawberry.	DAS ELISA
07132S/100	Xanthomonas fragariae set	100 tests
07132S/500	Xanthomonas fragariae set	500 tests
07132C/096	Xanthomonas fragariae complete kit	96 tests
07132C/480	Xanthomonas fragariae complete kit	480 tests
07132PC	Positive Control Xanthomonas fragariae inactivated	1 vial (10 tests)
07132NC	Negative Control Xanthomonas fragariae	1 vial (10 tests)
<b>07077</b>	<b>Xanthomonas hortorum pv. pelargonii</b>	<b>Size</b>
	Xanthomonas campestris pv. pelargonii. Bacterial Blight of Pelargonium.	DAS ELISA
07077S/100	Xanthomonas hortorum pv. pelargonii set	100 tests
07077S/500	Xanthomonas hortorum pv. pelargonii set	500 tests
07077C/096	Xanthomonas hortorum pv. pelargonii complete kit	96 tests
07077C/480	Xanthomonas hortorum pv. pelargonii complete kit	480 tests
07077PC	Positive Control Xanthomonas hortorum pv. pelargonii inactivated	1 vial (10 tests)
07077NC	Negative Control Xanthomonas hortorum pv. pelargonii	1 vial (10 tests)
<b>07130</b>	<b>Xanthomonas oryzae pv. oryzae</b>	<b>Size</b>
	Xanthomonas campestris pv. oryzae. Bacterial Leaf Blight of rice	DAS ELISA
07130S/100	Xanthomonas oryzae pv. oryzae set	100 tests
07130S/500	Xanthomonas oryzae pv. oryzae set	500 tests
07130C/096	Xanthomonas oryzae pv. oryzae complete kit	96 tests
07130C/480	Xanthomonas oryzae pv. oryzae complete kit	480 tests
07130PC	Positive Control Xanthomonas oryzae pv. oryzae inactivated	1 vial (10 tests)
<b>07210</b>	<b>Positive Control Quarantine GAR unspecific</b>	1 vial (10 tests)
07130NC	Negative Control Xanthomonas oryzae pv. oryzae	1 vial (10 tests)

<b>07119</b>	<b>Xylella fastidiosa grapevine isolate</b>	<b>Size</b>
	Pierce's disease. Host range: many important trees and shrubs	DAS ELISA
07119S/100	Xylella fastidiosa grapevine isolate set	100 tests
07119S/500	Xylella fastidiosa grapevine isolate set	500 tests
07119C/096	Xylella fastidiosa grapevine isolate complete kit	96 tests
07119C/480	Xylella fastidiosa grapevine isolate complete kit	480 tests
07119PC	Positive Control Xylella fastidiosa grapevine isolate inactivated	1 vial (10 tests)
07119NC	Negative Control Xylella fastidiosa grapevine isolate	1 vial (10 tests)
<b>07138</b>	<b>Xylophilus ampelinus</b>	<b>Size</b>
	Xanthomonas ampelina. Bacterial blight of grapevine	DAS ELISA
07138S/100	Xylophilus ampelinus set	100 tests
07138S/500	Xylophilus ampelinus set	500 tests
07138C/096	Xylophilus ampelinus complete kit	96 tests
07138C/480	Xylophilus ampelinus complete kit	480 tests
07138PC	Positive Control Xylophilus ampelinus inactivated	1 vial (10 tests)
07138NC	Negative control Xylophilus ampelinus	1 vial (10 tests)
	<b>ELISA Products - Fungi</b>	
<b>07158</b>	<b>Botrytis cinerea grapevine isolate (Cocktail ELISA)</b>	<b>Size</b>
	Grey Mold. Grauschimmel. Polyphagous plant pathogen. The antiserum has been tested positive for ornamental and other B.cinerea isolates	DAS ELISA
07158S/100	Botrytis cinerea set	100 tests
07158S/500	Botrytis cinerea set	500 tests
07158C/096	Botrytis cinerea complete kit blue	96 tests
07158C/480	Botrytis cinerea complete kit blue	480 tests
07158PC	Positive Control Botrytis cinerea	1 vial (10 tests)
07158NC	Negative Control Botrytis cinerea	1 vial (10 tests)
<b>07079</b>	<b>Phytophthora spp.</b>	<b>Size</b>
	The antiserum detects many Phytophthora spp. including Phyt. ramorum	DAS ELISA
07079S/100	Phytophthora spp.set	100 tests
07079S/500	Phytophthora spp.set	500 tests
07079C/096	Phytophthora spp. complete kit	96 tests
07079C/480	Phytophthora spp. complete kit	480 tests
07079PC	Positive Control Phytophthora spp.	1 vial (10 tests)
07079NC	Negative Control Phytophthora spp.	1 vial (10 tests)
<b>07148</b>	<b>Pythium spp.</b>	<b>Size</b>
	The antiserum detects many Pythium spp.	DAS ELISA
07148S/100	Pythium spp. set	100 tests
07148S/500	Pythium spp. set	500 tests
07148C/096	Pythium spp.. complete kit	96 tests
07148C/480	Pythium spp. complete kit	480 tests
07148PC	Positive Control Pythium spp.	1 vial (10 tests)
07148NC	Negative Control Pythium spp.	1 vial (10 tests)



<b>07329</b>	<b>Antiserum <i>Pantoea stewartii</i> ssp. <i>stewartii</i> ex rabbit</b>	<b>Size</b>
07329/01	Antiserum <i>Pantoea</i> st. ssp. <i>stewartii</i> ca. 5 000 tests (20µl/well)	0.1 ml
07329/02	Antiserum <i>Pantoea</i> st. ssp. <i>stewartii</i> ca. 10 000 tests (20µl/well)	0.2 ml
07329/10	Antiserum <i>Pantoea</i> st. ssp. <i>stewartii</i> ca. 50 000 tests (20µl/well)	1.0 ml
07329PC	Positive IF Control <i>Pantoea</i> st. ssp. <i>stewartii</i> inactivated	1 vial
<b>07381</b>	<b>Antiserum <i>P. chrysanthemi</i> see <i>Dickeya chrysanthemi</i></b>	
<b>07339</b>	<b>Antiserum <i>Pseudomonas syringae</i> pv. <i>tomato</i> ex rabbit</b>	<b>Size</b>
07339/01	Antiserum <i>Pseudomonas</i> s. pv. <i>tomato</i> ca. 1 000 tests (20µl/well)	0.1 ml
07339/02	Antiserum <i>Pseudomonas</i> s. pv. <i>tomato</i> ca. 2 000 tests (20µl/well)	0.2 ml
07339/10	Antiserum <i>Pseudomonas</i> s. pv. <i>tomato</i> ca. 10 000 tests (20µl/well)	1.0 ml
07339PC	Positive Control <i>Pseudomonas</i> s. pv. <i>tomato</i> inactivated	1 vial
<b>07355</b>	<b>Antiserum <i>Plasmopora viticola</i> ex rabbit</b>	<b>Size</b>
	Identification of oospores only. Cross reaction with other oomycetes	
07355/02	Antiserum <i>Plasmopora viticola</i> ca. 10 000 tests (20µl/well)	0.2 ml
07355/10	Antiserum <i>Plasmopora viticola</i> ca. 50 000 tests (20µl/well)	1.0 ml
<b>07356</b>	<b>Antiserum <i>Ralstonia solanacearum</i> ex goat</b>	<b>Size</b>
07356/01	Antiserum <i>Ralstonia solanacearum</i> 50 000 tests (20µl/well)	0.1 ml
07356/02	Antiserum <i>Ralstonia solanacearum</i> 100 000 tests (20µl/well)	0.2 ml
07356PC	Positive IF Control <i>Ralstonia solanacearum</i>	1 vial
07310PC	Unspecific IF Control for <i>C.m.m.</i> , <i>C.m.s.</i> , <i>Ralstonia</i> , <i>Dickeya chrys.</i>	1 vial
<b>07373</b>	<b>Antiserum <i>Xanthomonas arboricola</i> pv. <i>corylina</i> ex rabbit</b>	<b>Size</b>
07373/01	Antiserum <i>Xanthomonas</i> a. pv. <i>corylina</i> ca. 3 000 tests (20µl/well)	0.1 ml
07373/02	Antiserum <i>Xanthomonas</i> a. pv. <i>corylina</i> ca. 6 000 tests (20µl/well)	0.2 ml
07373/10	Antiserum <i>Xanthomonas</i> a. pv. <i>corylina</i> ca.30 000 tests (20µl/well)	1.0ml
07373PC	Positive IF control <i>X. arboricola</i> pv. <i>corylina</i> inactivated	1 vial
<b>07325</b>	<b>Antiserum <i>Xanthomonas axonopodis</i> pv. <i>begoniae</i> ex rabbit</b>	<b>Size</b>
07325/01	Antiserum <i>Xanthomonas</i> a. pv. <i>begoniae</i> ca. 5 000 tests (20µl/well)	0.1 ml
07325/02	Antiserum <i>Xanthomonas</i> a. pv. <i>begoniae</i> ca. 10 000 tests (20µl/well)	0.2 ml
07325/10	Antiserum <i>Xanthomonas</i> a. pv. <i>begoniae</i> ca. 50 000 tests (20µl/well)	1.0 ml
07325PC	Positive IF Control <i>Xanthomonas axonopodis</i> pv. <i>begoniae</i> inactivated	1 vial
<b>07361</b>	<b>Antiserum <i>Xanthomonas axonopodis</i> pv. <i>phaseoli</i> ex rabbit</b>	<b>Size</b>
07361/01	Antiserum <i>Xanthomonas</i> a. pv. <i>phaseoli</i> ca. 5000 tests (20µl/well)	0.1ml
07361/02	Antiserum <i>Xanthomonas</i> a. pv. <i>phaseoli</i> ca. 10 000 tests (20µl/well)	0.2ml
07361/10	Antiserum <i>Xanthomonas</i> a. pv. <i>phaseoli</i> ca. 50 000 tests (20µl/well)	1.0 ml
07361PC	Positive IF Control <i>Xanthomonas axonopodis</i> pv. <i>phaseoli</i> inactivated	1 vial
<b>07324</b>	<b>Antiserum <i>X. campestris</i> Lobelia isolate ex rabbit</b>	<b>Size</b>
07324/01	Antiserum <i>Xanthomonas</i> c.Lobelia isolate ca. 5 000 tests (20µl/well)	0.1 ml
07324/02	Antiserum <i>Xanthomonas</i> c. Lobelia isolate ca.10 000 tests (20µl/well)	0.2 ml
07324/10	Antiserum <i>Xanthomonas</i> c. Lobelia isolate ca.50 000 tests (20µl/well)	1.0 ml
07324PC	Positive IF Control <i>Xanthomonas campestris</i> Lobelia isolate inactivated	1 vial

<b>07331</b>	<b>Antiserum Xanthomonas campestris pv. vesicatoria ex rabbit</b>	<b>Size</b>
07331/01	Antiserum Xanthomonas c. pv. vesicatoria ca. 2 000 tests (20µl/well)	0.1 ml
07331/02	Antiserum Xanthomonas c. pv. vesicatoria ca. 4 000 tests (20µl/well)	0.2 ml
07331/10	Antiserum Xanthomonas c. pv. vesicatoria ca. 20 000 tests (20µl/well)	1.0 ml
07331PC	Positive IF control Xanthomonas campestris pv. vesicatoria inactivated	1 vial
<b>07377</b>	<b>Antiserum Xanthomonas hortorum pv. pelargonii ex rabbit</b>	<b>Size</b>
07377/01	Antiserum Xanthomonas h. pv. pelargonii ca. 5 000 tests (20µl/well)	0.1 ml
07377/02	Antiserum Xanthomonas h. pv. pelargonii ca. 10 000 tests (20µl/well)	0.2 ml
07377/10	Antiserum Xanthomonas h. pv. pelargonii ca. 50 000 tests (20µl/well)	1.0 ml
07377PC	Positive IF Control Xanthomonas hortorum pv. pelargonii inactivated	1 vial
<b>07319</b>	<b>Antiserum Xylella fastidiosa ex rabbit</b>	<b>Size</b>
07319/01	Antiserum Xylella fastidiosa ca. 5 000 tests (20µl/well)	0.1 ml
07319/02	Antiserum Xylella fastidiosa ca. 10 000 tests (20µl/well)	0.2 ml
07319/10	Antiserum Xylella fastidiosa ca. 50 000 tests (20µl/well)	1.0 ml
07319PC	Positive IF control Xylella fastidiosa inactivated	1 vial
<b>Immunofluorescence - Secondary Antibodies</b>		<b>Size</b>
<b>07204</b>	<b>Goat-anti-rabbit IgG(H+L)Cy3™ ca. 10 000 IF tests (20 µl/well)</b> Stable red fluorescence. Excitation 550 nm, Emission 570 nm	1.5 mg
<b>07201</b>	<b>Goat-anti-rabbit IgG(H+L)FITC ca. 10 000 IF tests (20 µl/well)</b> Green fluorescence. Excitation 520 nm, Emission 492 nm	1.5 mg
<b>07202</b>	<b>Rabbit-anti-goat(H+L)Cy3™ ca. 10 000 IF tests (20 µl/well)</b> Stable red fluorescence. Excitation 550 nm, Emission 570 nm	1.5 mg
<b>07200</b>	<b>Rabbit-anti-goat(H+L)FITC ca. 10 000 IF tests (20 µl/well)</b> Green fluorescence. Excitation 520 nm, Emission 492 nm	1.5 mg
<b>Immunofluorescence - Disposables</b>		<b>Size</b>
07400/100	Multiwell Slides IFT 10x6 blue	2x50 slides
07401/1000	Cover Slides 24x16 mm	1000 slides

<b>PCR Products - Phytoplasma</b>		
	<b>New: Complete PCR kits which contain all reagents necessary for the</b>	
	<b>PCR reaction. See page 2 for composition of sets and complete kits</b>	
<b>08000</b>	<b>Apple Proliferation Group Phytoplasma PCR</b>	<b>Size</b>
08000S/100	Apple Proliferation Group Phytoplasma PCR set	100 tests
08000C/100	Apple Proliferation Group Phytoplasma complete PCR reaction kit	100 tests
08000PC	Positive PCR Control Apple Proliferation Group Phytoplasma	1 vial (10 reactions)
08000 NC	Negative PCR Control Apple Proliferation Group Phytoplasma	1 vial (10 reactions)
<b>08002</b>	<b>Aster Yellows Phytoplasma PCR</b>	<b>Size</b>
08002S/100	Aster Yellows Phytoplasma PCR set	100 tests
08002C/100	Aster Yellows Phytoplasma complete PCR reaction kit	100 tests
08002PC	Positive PCR Control Aster Yellows Phytoplasma	1 vial (10 reactions)
08002NC	Negative PCR Control Aster Yellows Phytoplasma	1 vial (10 reactions)
<b>08003</b>	<b>Elm Yellows Phytoplasma PCR</b>	<b>Size</b>
08003S/100	Elm Yellows Phytoplasma PCR set	100 tests
08003C/100	Elm Yellows Phytoplasma complete PCR reaction kit	100 tests
08003PC	Positive PCR Control Elm Yellows Phytoplasma	1 vial (10 reactions)
08003NC	Negative PCR Control Elm Yellows Phytoplasma	1 vial (10 reactions)
<b>08004</b>	<b>Stolbur Phytoplasma PCR</b>	<b>Size</b>
08004S/100	Stolbur Phytoplasma PCR set	100 tests
08004C/100	Stolbur Phytoplasma complete PCR reaction kit	100 tests
08004PC	Positive PCR Control Stolbur Phytoplasma	1 vial (10 reactions)
08001NC	Negative PCR Control Stolbur Phytoplasma	1 vial (10 reactions)
<b>08009</b>	<b>Universal Phytoplasma nested PCR</b>	<b>Size</b>
08009S/100	Universal Phytoplasma nested PCR Set	100 tests
08009C/100	Universal Phytoplasma nested complete PCR reaction kit	100 tests
08000PC	Positive PCR Control Apple Proliferation Group P.	1 vial (10 reactions)
08001NC	Negative PCR Control Phytoplasma	1 vial (10 reactions)
<b>PCR Products - Bacteria</b>		
<b>08064</b>	<b>Clavibacter michiganensis ssp. sepedonicus PCR</b>	<b>Size</b>
08064S/100	Clavibacter michiganensis ssp. sepedonicus PCR set	100 tests
08064C/100	Clavibacter michiganensis ssp. sepedonicus complete PCR kit	100 tests
08064PC	Positive PCR Control Clavibacter m. ssp sepedonicus	1 vial (10 reactions)
08064NC	Negative PCR Control Clavibacter m. ssp sepedonicus	1 vial (10 reactions)





<b>ELISA Chemicals and Consumables</b>		
<b>Cat. No.</b>	<b>Description</b>	<b>Size</b>
00103/025	Albumin for ELISA	25g
00103/100	Albumin for ELISA	100g
00104/001	Blocking Milk powder	1 kg
07600/001	Coating Buffer powder	1 liter
07601/001	Conjugate/Sample Buffer Standard powder	1 liter
07615/001	Conjugate/Sample Buffer LOEWE II powder	1 liter
07613/001	Extraction Buffer LOEWE I powder sample extraction of TuMV, TYMV	1 liter
<b>ELISA-Plates Greiner Microlon 600 High Binding - a highly sensitive low-background German plate, tested extensively in our laboratory</b>		
07803/05	ELISA-Plates Greiner Microlon 600 High Binding	5 pieces
07803/10	ELISA-Plates Greiner Microlon 600 High Binding	10 pieces
07803/100	ELISA-Plates Greiner Microlon 600 High Binding	100 pieces
07800/05	ELISA-Plates Nunc MaxiSorp™	5 pieces
07800/10	ELISA-Plates Nunc MaxiSorp™	10 pieces
07800/60	ELISA-Plates Nunc MaxiSorp™	60 pieces
00130/005	4-Nitrophenylphosphate Na2-salt	5g
00130/025	4-Nitrophenylphosphate Na2-salt	25g
00134/001	Polyvinylpyrrolidone K25	1 kg
07603/005	Wash Buffer Powder	5 liter
07615/005	Substrate Tablets 20 mg	5 tablets
07615/010	Substrate Tablets 20 mg	10 tablets
07617/005	Substrate Tablets 5 mg	5 tablets
07617/010	Substrate Tablets 5 mg	10 tablets
07602/025	Substrate Buffer 5X liquid	25 ml
00131/100	Tween 20 @ ELISA grade	100 ml







## ALLGEMEINE VERKAUFS – UND LIEFERBEDINGUNGEN (BRD)

### **Allgemeines**

Unsere Verkaufs- und Lieferbedingungen sind Bestandteil aller Angebote und aller mit unseren Kunden geschlossenen Verträge. Einkaufsbedingungen des Kunden verpflichten uns auch dann nicht, wenn wir nicht ausdrücklich widersprechen. Mit der Auftragserteilung erkennt der Kunde unsere Bedingungen stillschweigend an, ohne dass es einer besonderen Vereinbarung bedarf.

### **Angebote, Aufträge**

Unsere Angebote sind bezüglich Preis, Liefermenge und -frist freibleibend. Dies gilt auch für unsere Kataloge und Preislisten. Schriftlich oder mündlich erteilte Aufträge gelten nur dann als von uns akzeptiert, wenn sie schriftlich bestätigt werden. Die Rechnungserteilung gilt als Auftragsbestätigung.

### **Preise**

Unsere Preise verstehen sich in zuzüglich der gesetzlichen Mehrwertsteuer in der jeweils gültigen Höhe. Bestätigte Preise sind freibleibend. Wenn nicht bei Vertragsabschluss anders durch uns schriftlich bestätigt, sind für die Berechnung die am Tage der Lieferung gültigen Preise maßgebend.

### **Versand**

Bei Aufträgen über 150.00 Euro netto liefern wir frei Postamt oder Bahnstation ohne Verpackungszuschlag. Bei Aufträgen unter 150.00 Euro netto berechnen wir Verpackungs- sowie Versandkosten. Zustellgebühren für Paketsendungen sowie Rollgelder gehen in jedem Fall zu Lasten des Bestellers. Wir behalten uns die Wahl der jeweils günstigsten Versandart vor. Der Versand erfolgt unversichert auf Gefahr des Käufers; eine Transportversicherung wird nur auf ausdrückliche Anweisung und auf Kosten des Käufers abgeschlossen.

### **Zahlungsbedingungen**

Unsere Rechnungen gelten als anerkannt, falls nicht innerhalb 30 Tagen schriftlich widersprochen wird. Die Zahlungsfrist läuft ab Rechnungsdatum und beträgt 30 Tage. Bei Zahlungsverzug des Käufers wird auch ein nichtfälliger Teil der Schuld fällig und sofort einforderbar. Der Verkäufer kann ausstehende Lieferungen verweigern, bis der Käufer seiner Zahlungspflicht nachgekommen ist.

### **Eigentumsvorbehalt**

Die gelieferte Ware bleibt bis zur völligen Bezahlung des Kaufpreises unser Eigentum. Der Käufer ist bis dahin nicht berechtigt, die Ware an Dritte zu verpfänden, oder als Sicherheit zu übereignen. Der Käufer ist widerruflich zur Weiterveräußerung dieser Vorbehaltsware im Rahmen eines geordneten Geschäftsbetriebs berechtigt. Die aus einer Weiterveräußerung an Dritte entstehenden Forderungen tritt er in Höhe unserer Forderungen an uns ab. Zugriffe Dritter auf die Vorbehaltsware oder abgetretene Forderungen müssen uns unverzüglich angezeigt werden. Der Käufer trägt für die Dauer des Eigentumsvorbehalts die Verantwortung für ausreichende Versicherung und für die Einhaltung der Lagerungsvorschriften.

### **Haftung**

Unsere Produkte sind nur für den Labor- und Fabrikationsbereich bestimmt. Sie dürfen weder in der Humanmedizin noch im Haushalt noch als Lebens- und Genussmittel verwendet werden. Wir haften nicht für Personen-, Sach- und Vermögensschäden, die durch unsachgemäße und bestimmungswidrige Handhabung unserer Produkte entstanden sind. Wir lehnen auch jeden Haftungsrückgriff für Schäden ab,

welche unseren Kunden durch Nichtbeachtung gesetzlicher Schutzbestimmungen entstanden sind. Soweit wir nicht Hersteller der von uns vertriebenen Produkte sind, beschränkt sich unsere Produkthaftung auf unsere Tätigkeit als Lieferant. Insbesondere übernehmen Besteller von Positivkontrollen die Verantwortung für das Hantieren, Lagern und für den möglichen Missbrauch dieser Produkte. Es liegt in der Verantwortung des Käufers, festzustellen, ob er entsprechend der gültigen gesetzlichen Bestimmungen diese Produkte beziehen und mit Ihnen umgehen darf.

### **Beanstandungen / Rücksendungen**

Mängelrügen müssen innerhalb von 7 Tagen nach Empfang der Ware schriftlich geltend gemacht werden. Mängelrügen entbinden den Käufer nicht von seiner Zahlungspflicht. Die beanstandete Ware darf nur mit unserem vorherigen ausdrücklichen Einverständnis zurückgesandt werden. Bei berechtigten Beanstandungen behalten wir uns die Wahl zwischen Ersatzlieferung und Gutschrift vor.

### **Erfüllungsort / Gerichtsstand**

Erfüllungsort für Lieferung und Zahlung ist Sauerlach. Gerichtsstand ist München.

### **Sie erreichen uns unter**

LOEWE® Biochemica GmbH  
Mühlweg 2a  
D-82054 Sauerlach

Telefon 08104 616 20

Telefax 08104 616 48

[sales@loewe-info.com](mailto:sales@loewe-info.com)

[service@loewe-info.com](mailto:service@loewe-info.com)

### **ZAHLUNGSMODALITÄTEN**

#### **Überweisung auf unser Konto bei:**

Raiffeisenbank Holzkirchen-Otterfing  
Münchener Str.  
D-83624 Otterfing  
Germany  
Kontonummer: 3216900  
Bankleitzahl: 70169410  
BIC: GENO DE FF1 HZO  
IBAN DE 85701694100003216900

#### **oder**

Postgiro München  
Kontonummer: 484661 - 803  
Bankleitzahl: 70010080  
BIC: PBNKDEFF  
IBAN: DE7370 0100 8004 8466 1803



## GENERAL TERMS AND CONDITIONS FOR NON-DOMESTIC SALE

### **Prices and Terms of Payment**

Our prices are in EURO ex-works Sauerlach. Prices are quoted without engagement on our part. Please contact our office in Sauerlach for direct orders or information about the possibility to order through our local supplier. We do not accept payment by credit card. Payment is in advance unless agreed otherwise.

All bank charges and costs for money transfer to our account in Germany are on the purchaser's full expense. Shipping and handling charges will be applied to the invoice.

### **Shipping**

Transport is at the purchaser's full risk. Purchasers outside Germany bear all freight costs. Products are shipped at ambient temperature via TNT, DHL, FEDEX, UPS or others. Please provide clear shipping instructions when ordering.

### **Warranties and Liabilities**

LOEWE® Biochemica warrants that its products perform as described in our product specification sheets. Should any product fail for reasons other than misuse, at LOEWE® Biochemica's option, it will be replaced free of charge, or the purchase price will be refunded. Returns must be authorized by us. This warranty is exclusive, and LOEWE® Biochemica makes no other warranty expressed or implied.

LOEWE® Biochemica shall not be liable for any accidental, consequential, or contingent damages. Please contact our technical service in case you have any question, or if a product fails to work as expected.

### **Discounts**

For information on bulk or volume discounts, please contact us.

### **Proper Handling**

All chemicals are produced for laboratory use for professionals only. We cannot accept liability caused by improper handling within the laboratory or in the household or when used on humans or animals. Our products are in particular not admitted for Human application. Customers ordering and receiving ELISA-Kits and/or positive controls for testing plant pathogens assume all responsibility for handling, storing, and possible abuse of those products. LOEWE® Biochemica is not responsible for damages and/or injuries arising from their supply. It is also in the responsibility of the customer to verify whether he/she is allowed to receive and handle this material.

### **Jurisdiction**

German law and German Jurisdiction are applicable to all legal and contractual disputes. Exclusive place of jurisdiction is Munich.

**Adress**

LOEWE® Biochemica GmbH  
Mühlweg 2a  
D-82054 Sauerlach

Telefon 08104 616 20  
Telefax 08104 616 48

[sales@loewe-info.com](mailto:sales@loewe-info.com)  
[service@loewe-info.com](mailto:service@loewe-info.com)

**PAYMENT**

Bank transfer to our account with

Raiffeisenbank Holzkirchen-Otterfing  
Münchener Str.  
D-83624 Otterfing  
Germany  
account no.: 3216900  
bank code: 70169410  
SWIFT: GENO DE FF1 HZO  
IBAN DE85701694100003216900

**or**

Postgiro München  
account no.: 484661 – 803  
bank code: 70010080  
BIC: PBNKDEFF  
IBAN: DE7370 0100 8004 8466 1803

**Credit Cards are not accepted.**